



PMD3530 Low Profile Magnetic Drill

Low-Profile Single Speed 1100 W
Magnetic Drilling Machine

May. 2024

Internal & Confidential

AGP TAIWAN

Lee Yeong Industrial Co., Ltd.
No.2, Kejia Rd., Douliu City, 64057, Taiwan
Tel : 886-5-5518689 Fax : 886-5-5518635

AGP EUROPE BV

Evenbroekveld 16D, 9420 Erpe-Mere, Belgium
Tel : +32 53 21 62 22 Fax : +32 53 83 88 20



Introduction

Target group & Applications

PMD3530 Introduction

The PMD3530 is a special type of magnetic drill specifically designed for operation in tight spaces. It can fit in a space 198 mm high. It fits both HSS and TCT annular cutters up to 35 mm diameter by 35 mm length.

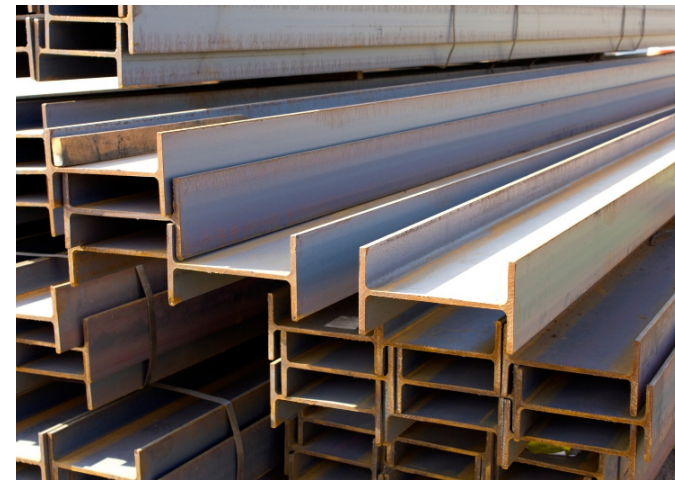
The quick-detachable feed lever is easy to mount on either side of the tool and fits into a hexagonal socket for easy positioning to six different starting points. A unique feature of this machine is its tool-free quick-release arbor, making cutter changes fast and easy. There is a convenient LED work light which points to the work surface in front of the machine.

Being both compact and light in weight, the PMD3530 is easy to use in spaces where a conventional magnetic drill could not fit, such as truck frames, box section steel structures, etc.

Target Groups and Applications

For operators in the industrial maintenance, metalworking, fabrication, steel frame construction fields, or anyone who needs to drill heavy steel in confined spaces, the PMD3530 is an indispensable tool.

This model is particularly convenient and portable, making it the perfect complement to both a conventional mag drill, as well as a stationary drill press. This model is the best choice for jobs that require a low-profile magnetic drill.



Sales Arguments



Quick-Release Arbor

The only low-profile mag drill on the market with quick-release arbor for tool-free cutter changes, saving time and effort.



Rear-Mounted Switch Controls

Mounting the switches at the rear allows them to be easily used from either left or right.



Fits 35 mm Length Annular Cutters

No special short cutters required: Standard 35 mm length cutters fit directly.



Quick-Release Crank Lever

The crank lever releases at the push of a button, allowing it to be quickly repositioned in any of 6 positions on either side of the machine



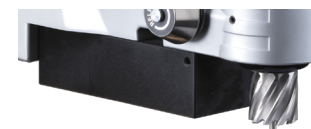
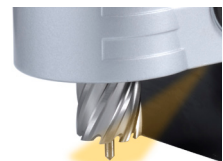
LED Work Lamp

The unique LED work lamp points directly at the work surface to help precisely aim the machine in dark spaces.



Top Handle

The top handle allows easy handling of the tool and can be temporarily removed to minimize the tool's height to 198 mm.



Powerful Electromagnet

15 000 N of force allow outstanding drilling stability.

Technical Specification

Technical Specification

Model	PMD3530
Power Input	1100 W
Voltage, Frequency	220-240 V~ 50-60 Hz or 110-120 V~ 50-60 Hz
No Load (Rated Load) Speed	650 (390) min ⁻¹
Max. Capacity Ø x Depth of Cut	35 mm x 35 mm (1-3/8" x 1-3/8")
Cutter Shank	19.05 mm (3/4") Weldon
Magnetic Adhesion	15,000 N
Weight	10.5 kg (23.2 lb)



- 1 Motor Switch
- 2 Magnet Switch
- 3 Quick-Release Arbor
- 4 Annular Cutter (Not included)
- 5 Pilot Pin (Not included)
- 6 Quick-Release Crank Lever
- 7 Magnet Base
- 8 Crank Handle
- 9 Top Handle



Offer Content

Standard Accessories

- ① PMD3530 Low-Profile Magnetic Drill
- ② Chip Guard Kit
- ③ Ratchet Strap



Comparison Table

Brand



Low Profile 35 mm



Model	PMD3530	MAB-155	PRO-36 AD	Element 50 low profile	Powerbor PB50	V32
Power	1 100 W	1 050 W	1 020 W	1 200 W	1 200 W	900 W
Capacity Ø	35 mm	35 mm	35 mm	50 mm	50 mm	32 mm
Depth of Cut	35 mm	30 mm	30 mm	50 mm	50 mm	30 mm
RPM-no load (rated load)	650 (390) /min	530 (320) /min	620 (370) /min	250-500 /min variable	250-500 /min variable	750 (450) /min
Cutter Shank	19.05 Weldon	19.05 Weldon	19.05 Weldon	19.05 Weldon	19.05 Weldon	19.05 Weldon
Quick-Release Arbor	Yes	No (set screw)	No (set screw)	No (set screw)	No (set screw)	No (set screw)
Cutting Fluid Feed	No	No	No	No	No	Yes
LED Work Light	Yes	No	No	No	No	No
Load Indicator	No	No	No	Yes (both sides)	Yes (both sides)	No
Magnet Force Indicator	No	No	No	Yes	Yes	No
Ratchet Handle	No	Yes	Yes	Yes	Yes	Yes
Dimensions (LxWxH)	285 x 101 x 198 mm	338 x 120 x 180 mm	H: 176 mm	329 x 100 x 179 mm	329 x 100 x 179 mm	H: 227 mm (185 mm w/o handle)
Magnetic Adhesion	15,000 N	not listed	8,900 N	10,000 N	10,000 N	16,000 N
Weight	10.5 kg	11.0 kg	9.5 kg	11.0 kg	11.0 kg	12.5 kg

Conclusion

The **AGP** PMD3530 is the only low profile mag drill with the convenience of a quick-release arbor and an LED work light. The work light is very welcome when working in confined, dark spaces. The quick-release arbor makes is quick and effortless to change between different cutter sizes.

Tool Dimensions

