

# AIRLESS PAINT SPRAYERS



		T328	EC021	PM021LF	PM021	PM025	PM031	PM039	PE048
<b>Wood Interior</b>	Lacquer	✓	✓	✓	✓	✓	✓	✓	✓
	Varnish	✓	✓	✓	✓	✓	✓	✓	✓
	Stain	✓	✓	✓	✓	✓	✓	✓	✓
	Sealer	✓	✓	✓	✓	✓	✓	✓	✓
	Enamel Paint	✓	✓	✓	✓	✓	✓	✓	✓
<b>Ceiling</b>	High Build Coating		✓	✓	✓	✓	✓	✓	✓
<b>Wood Exterior &amp; Masonry</b>	Exterior Stain		✓	✓	✓	✓	✓	✓	✓
	Vinyl		✓	✓	✓	✓	✓	✓	✓
	Latex		✓	✓	✓	✓	✓	✓	✓
	Acrylic		✓	✓	✓	✓	✓	✓	✓
	Alkyd		✓	✓	✓	✓	✓	✓	✓
	Elastomeric						✓	✓	✓
	Block Filler						✓	✓	✓
	Elastic Cement							✓	
<b>Drywall</b>	Plaster						✓	✓	✓
<b>Structural Steel</b>	Heavy Coating		✓	✓	✓	✓	✓	✓	✓

# HA10 HIGH PRESSURE DISINFECTANT SPRAYER

A high performance high pressure airless sprayer for the fastest possible application of disinfectants. Equipped with accessories chosen for water-based disinfectants.



## Features

1. High performance piston pump with long life packings.
2. Flexible Suction Hose.
3. Mechanical Pressure Control System.
4. DC motor for high torque.

**\* High-Pressure Hose not included.  
Standard/ Optional Accessories See p. 147**

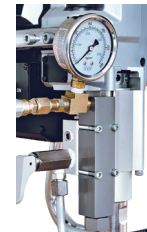
Model	HA10
Motor Type	DC Motor, Fan-Cooled
Power Input	700 W
Power Output	0.46 kW (0.57 HP)
Voltage, Frequency	220-240 V~ 50-60 Hz or 110-120 V~ 50-60 Hz
Max Tip Size	0.010"
Max Flow	1.9 l/min (0.50 gpm)
Max Pressure	96 bar (1400 psi)
Dimensions (LxWxH)	360 x 250 x 400 mm
Weight	11.0 kg (24.3 lb)
Characteristics / Certification	CECB

# EC021 PISTON PUMP AIRLESS PAINT SPRAYER

The light, compact airless sprayer with mechanical pressure control for up to 0.021" tips for a wide range of paint types.



6.2L Hopper Kit



The optional Pump Filter gives additional filtration for longer component life




The optional Pressure Gauge allows the operator to see the exact pressure at the pump

## Features

1. DC motor for high torque.
2. Mechanical Pressure Control System.
3. High performance piston pump with long life packings.
4. Drip Cup for mess-free placement of suction tube.
5. Flexible Suction Hose.

**\* High-Pressure Hose not included. Standard/ Optional Accessories See p. 147**

Model	EC021
Motor Type	DC Motor, Fan-Cooled
Power Input	700 W
Power Output	0.46 kW (0.57 HP)
Voltage, Frequency	220-240 V~ 50-60 Hz or 110-120 V~ 50-60 Hz
Max Tip Size	0.021"
Max Flow	1.9 l/min (0.50 gpm)
Max Pressure	207 bar (3,000 psi)
Dimensions (LxWxH)	360 x 250 x 400 mm
Weight	11.0 kg (24.3 lb)
Characteristics / Certification	CECB 

# PM021LF & PM025LF PISTON PUMP AIRLESS PAINT SPRAYERS

Low frame airless sprayers with digital electronic pressure control for a wide range of paint types.  
 PM021LF: 0.021" tips / PM025LF: 0.025" tips.



## Features

1. Totally enclosed, fan-cooled, DC motor for high torque and long life.
2. Built-in toolbox for holding extra tips and filters.
3. High performance piston pump with long-life packings.
4. Quick-response electronic pressure control with LCD screen. (choose BAR or PSI)
5. Drip Cup for mess-free placement of suction tube.
6. Pump Filter.
7. Flexible Suction Hose.

**\* High-Pressure Hose not included.  
 Standard/ Optional Accessories See p. 147**

Model	PM021LF	PM025LF
Motor Type	DC Motor (TEFC)	
Power Input	1000 W	1300 W
Power Output	0.68 kW (0.9 HP)	0.88 kW (1.2 HP)
Voltage, Frequency	220-240 V~ 50-60 Hz or 110-120 V~ 50-60 Hz	
Max Tip Size	0.021"	0.025"
Max Flow	2.1 l/min (0.55 gpm)	2.7 l/min (0.71 gpm)
Max Pressure	207 bar (3,000 psi)	
Control	Digital	
Overload Protection	With	
Dimensions (LxWxH)	420 x 300 x 550 mm	
Weight	23.4 kg (51.6 lb)	23.5 kg (51.8 lb)
Characteristics / Certification		

# PM021, PM025 PISTON PUMP AIRLESS PAINT SPRAYERS

High frame airless sprayers with digital electronic pressure control.



## Features

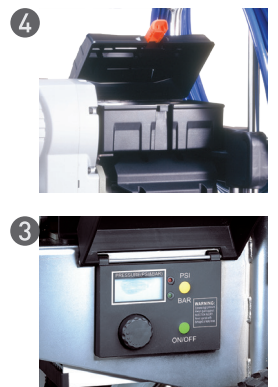
1. Totally enclosed, fan cooled, DC motor for high torque and long life.
2. Quick-response electronic pressure control with LCD screen. (BAR or PSI)
3. High performance piston pump with long-life packings.
4. Built-in Toolbox for holding extra tips and filters.
5. Hooks for convenient hose storage.
6. Gear-driven Pump.
7. Pump Filter.
8. Retractable handle.

**\* High-Pressure Hose not included.  
Standard/ Optional Accessories See p. 147**

Model	PM021	PM025
Motor Type	DC Motor (TEFC)	
Power Input	1000 W	1300 W
Power Output	0.68 kW (0.9 HP)	0.88 kW (1.2 HP)
Voltage, Frequency	220-240 V~ 50-60 Hz or 110-120 V~ 50-60 Hz	
Max Tip Size	0.021"	0.025"
Max Flow	2.1 l/min (0.55 gpm)	2.7 l/min (0.71 gpm)
Max Pressure	207 bar (3,000 psi)	
Control	Digital	
Overload Protection	With	
Dimensions (LxWxH)	515 x 530 x 795 mm	
Weight	33 kg (72.6 lb)	33 kg (72.6 lb)
Characteristics / Certification		

# PM031 PISTON PUMP AIRLESS PAINT SPRAYERS

Heavy-duty airless sprayer with brushless motor and digital electronic pressure control for up to 0.031" tips. Multiple gun capability.



## Features

1. Powerful Brushless Motor.
2. High performance piston pump with long-life packings.
3. Quick-response electronic pressure control with LCD screen. (BAR or PSI)
4. Built-in Toolbox for holding extra tips and filters.
5. Hooks for convenient hose storage.

**\* High-Pressure Hose not included. Standard/ Optional Accessories See p. 148**

Model	PM031
Motor Type	Brushless DC Motor
Power Output	1.5 kW (2.0 HP)
Voltage, Frequency	220-240 V~ 50-60 Hz or 110-120 V~ 50-60 Hz
Max Tip Size	0.031"
Max Flow	4.17 l/min (1.1 gpm)
Max Pressure	227 bar (3,300 psi)
Control	Digital
Overload Protection	With
Dimensions (LxWxH)	670 x 580 x 810 mm
Weight	59.0 kg (130.1 lb)
Characteristics / Certification	

# PM039 PISTON PUMP AIRLESS PAINT SPRAYERS

Heavy-duty airless sprayer with brushless motor and digital electronic pressure control for up to 0.039" tips. Multiple gun capability.



## Features

1. Powerful Brushless Motor.
2. Special Plaster-Type Suction Assembly for plaster and other heavy materials.
3. Quick-response electronic pressure control with LCD screen. (BAR or PSI)
4. High performance piston pump with long-life packings.
5. Built-in Toolbox for holding extra tips and filters.
6. Plaster Tank (Optional) The frames of both units interlock with special hooks for a neat and compact assembly. Includes special coupling adapter, wringer and scraper plate.
7. Ball Type Priming Valve.
8. Special hooks for coupling with plaster tank.
9. Coupling Adapter.

**\* High-Pressure Hose not included.  
Standard/ Optional Accessories See p. 148**

Model	PM039
Motor Type	Brushless DC Motor
Power Output	1.8 kW (2.4 HP)
Voltage, Frequency	220-240 V~ 50-60 Hz or 110-120 V~ 50-60 Hz
Max Tip Size	0.039"
Max Flow	6.4 l/min (1.7 gpm)
Max Pressure	227 bar (3,300 psi)
Control	Digital
Overload Protection	With
Dimensions (LxWxH)	670 x 580 x 810 mm
Weight	61.1 kg (134.7 lb)
Characteristics / Certification	

# PE048 ENGINE AIRLESS PAINT SPRAYERS

Heavy-duty airless sprayer with petrol (gasoline) engine and digital electronic pressure control for up to 0.048" tips. Multiple gun capability. Excellent for heavy materials and long hose runs.



## Features

- 1. 6.5 HP Honda Engine for independent operation and plentiful power.
- 2. Electronic Pressure Control with LCD display for Pressure, Working Hours, and Diagnostic Messages.
- 3. Control System includes Auto Stop Function when paint is used up.
- 4. High-Durability Electromechanical Clutch.
- 5. Hours Display Button. (on back of control box)
- 6. High performance piston pump with long-life packings.
- 7. Built-In Tool Box for holding, tools, extra tips, and filter.
- 8. Quick-Release Pump for easy maintenance.
- 9. Large pneumatic wheels and sturdy frame.
- 10. Flexible Suction Hose.

\* **High-Pressure Hose not included.**

**Standard/ Optional Accessories See p. 148**

Model	PE048		
Engine Type	Honda GX200, Four Stroke Petrol (Gasoline)		
Power Rating	6.5 HP		
Max. Tip Size (1 Gun)	0.048"	Max. Tip Size (3 Guns)	0.027"
Max. Tip Size (2 Guns)	0.035"	Max. Tip Size (4 Guns)	0.023"
Minimum Tip Size	0.023"		
Max Flow	8.3 l/min (2.2 gpm)		
Max Pressure	227 bar (3,300 psi)		
Pressure Control	Digital		
Max. Hose Length	100 m ( 300' )		
Dimensions (LxWxH)	670 x 580 x 810 mm		
Weight	74.5 kg (164.2 lb)		



# T328 HVLP TURBINE PAINT SPRAYER

High Volume, Low Pressure 3-stage turbine with up to 2800 l/min air flow rate for fine finish applications.



**OPTIONAL ACCESSORIES:**



250 ml Plastic Cup for Gun



Radiator Kit



Needle Nozzle Set

**Features**

1. 3-Stage turbine with high output motor.
2. Infinitely variable speed control for fine-tuning airflow.
3. Non-bleeder HVLP Gun.
4. Easy access filter compartment.
5. Convenient storage space.
6. Carry handle at the balance point of the machine.
7. Air hose with quick-release couplings on both ends.

**Standard/ Optional Accessories See p. 149**

Model	T328
Power Input	1400 W
Voltage, Frequency	220-240 V~ 50-60 Hz or 110-120 V~ 50-60 Hz
Turbine	3 Stage
Airflow	2800 l/min
Max. Working Pressure	0.41 bar (6 psi)
Soft Start	With
Dimensions (LxWxH)	325 x 250 x 325 mm
Weight	8.5 kg (18.7 lb)
Characteristics / Certification	

# Sprayer Accessories

## HA10 High Pressure Disinfectant Sprayer

Standard Accessories	
7/8" Spray Gun	
7/8" Tip Guard	
510 Tip	
15" (380 mm) Extension	
Optional Accessories	Part Number
Extensions	See p. 149



**a** 6.2L Hopper Kit

## EC021 Piston Pump Airless Paint Sprayer

Standard Accessories	
Tommy Bar	
Flexible Suction Hose	
Throat Seal Oil (100 ml Squeeze Bottle)	
Optional Accessories	Part Number
Pump Filter Set	See p. 149
Replacement Pump Filter Screen	
Gun - (Not incl. Tip Guard or Tip)	See p. 149
<b>a</b> 6.2L Hopper Kit	0299-0097-00000-002
<b>b</b> Pressure Gauge	0299-0181-00000-001



**b** Pressure Gauge

## PM021LF, PM025LF Piston Pump Airless Paint Sprayers

Standard Accessories	
Gun With Tip Guard and Tip (0.017")	
Pump Filter w/ One Each 60 & 100 Mesh	
Special Multi-Purpose Wrench	
Flexible Suction Hose	
Throat Seal Oil (100 ml Squeeze Bottle)	
Tommy Bar	
Optional Accessories	Part Number
Pump Filter w/ 30 Mesh	See p. 149

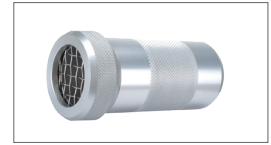
## PM021, PM025 Piston Pump Airless Paint Sprayers

Standard Accessories	
Gun With Tip Guard and Tip (0.017")	
Pump Filter w/ One Each 60 & 100 Mesh	
Special Multi-Purpose Wrench	
Rigid Suction Tube	
Throat Seal Oil (100 ml Squeeze Bottle)	
Tommy Bar	
Optional Accessories	Part Number
Pump Filter w/ 30 Mesh	See p. 149

# Sprayer Accessories

## PM031 Piston Pump Airless Paint Sprayers

Standard Accessories	
Gun With Tip Guard and Tip (0.031")	
Inlet strainer 20 Mesh	
Pump Filter w/ One Each 60 & 100 Mesh	
Special Multi-Purpose Wrench	
Throat Seal Oil (100 ml Squeeze Bottle)	
Tommy Bar	
Optional Accessories	Part Number
Pump Filter w/ 30 Mesh	See p. 149



**d** Inlet Strainer 20 Mesh



**e** Inlet Strainer 16 Mesh

## PM039 Piston Pump Airless Paint Sprayers

Standard Accessories	
Gun With Tip Guard and Tip (0.031")	
Inlet strainer 16 Mesh	
<b>d</b> Pump Filter w/ One Each 60 & 100 Mesh	
Special Multi-Purpose Wrench	
Throat Seal Oil (100 ml Squeeze Bottle)	
Tommy Bar	
Optional Accessories	Part Number
Pump Filter w/ 30 Mesh	See p. 149

## PE048 Engine Airless Paint Sprayers

Standard Accessories	
Gun With Tip Guard and Tip (0.035")	
<b>e</b> Inlet strainer 8 Mesh	
Pump Filter w/ One Each 60 & 100 Mesh	
Special Multi-Purpose Wrench	
Throat Seal Oil (100 ml Squeeze Bottle)	
Tommy Bar	
Optional Accessories	Part Number
Pump Filter w/ 30 Mesh	See p. 149

# T328 HVLP Turbine Paint Sprayer

Standard Accessories		Part Number
<b>a</b>	Gun with 1.3mm Needle Nozzle Set	305-00172-000-001
Optional Accessories		Part Number
<b>b</b>	Needle Nozzle Sets(0.5 mm)	305-00167-000-001
<b>b</b>	Needle Nozzle Sets(0.8 mm)	305-00167-000-002
<b>b</b>	Needle Nozzle Sets(1.0 mm)	305-00167-000-003
<b>b</b>	Needle Nozzle Sets(1.2 mm)	305-00167-000-004
<b>b</b>	Needle Nozzle Sets(1.3 mm)	305-00167-000-005
<b>b</b>	Needle Nozzle Sets(1.8 mm)	305-00167-000-006
<b>b</b>	Needle Nozzle Sets(2.0 mm)	305-00167-000-007
<b>b</b>	Needle Nozzle Sets(2.5 mm)	305-00167-000-008
<b>c</b>	Radiator Kit	0299-0107-00000-001
<b>d</b>	250 ml Plastic Cup for Gun	305-00299-000-001



**Air Hose**



**a HVLP Gun Set**



**b Needle Nozzle Set**

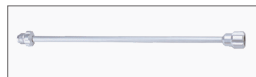


**c Radiator Kit**



**d 250 ml Plastic Cup**

## Sprayer Accessories



**f Tip Extensions**



**g Pump Filter**



**h Gun 7/8"**



**i Tip Guard 7/8"**



**j Reverisble Tip, with Seat**

Tip Extensions	Part Number	Tip Extensions	Part Number
<b>f</b> Tip Extensions 11/16" x 15"(L)	0201-0096-00906-001	Tip Extensions 7/8" x 15"(L)	0201-0096-00906-002
<b>f</b> Tip Extensions 11/16" x 30"(L)	0201-0096-00906-003	Tip Extensions 7/8" x 30"(L)	0201-0096-00906-004
<b>f</b> Tip Extensions 11/16" x 60"(L)	0201-0096-00906-005	Tip Extensions 7/8" x 60"(L)	0201-0096-00906-006
Pump Filter	Part Number		
<b>g</b> Pump Filter- 30 Mesh	202-0007-00000-001		
<b>g</b> Pump Filter- 60 Mesh	202-0007-00000-002		
<b>g</b> Pump Filter-100 Mesh	202-0007-00000-003		
Gun, Tip Guard And Tips	Part Number	Gun, Tip Guard And Tips	Part Number
<b>h</b> Gun 7/8"	0299-0061-00000-002	Tip 521 (0.021")	305-00168-000-005
<b>i</b> Tip Guard 7/8"	0299-0050-00000-002	Tip 523 (0.023")	305-00168-000-007
<b>j</b> Reverisble Tip, with Seat		Tip 525 (0.025")	305-00168-000-008
Tip 513 (0.013")	305-00168-000-001	Tip 529 (0.029")	305-00168-000-012
Tip 215 (0.015")	305-00168-000-019	Tip 531 (0.031")	305-00168-000-009
Tip 315 (0.015")	305-00168-000-020	Tip 533 (0.033")	305-00168-000-010
Tip 515 (0.015")	305-00168-000-002	Tip 535 (0.035")	305-00168-000-006
Tip 517 (0.017")	305-00168-000-003	Tip 537 (0.037")	305-00168-000-013
Tip 519 (0.019")	305-00168-000-004	Tip 539 (0.039")	305-00168-000-014

