

AGP[®]

Drill Stand

S800 / S500 / S350 / AS200 / S170



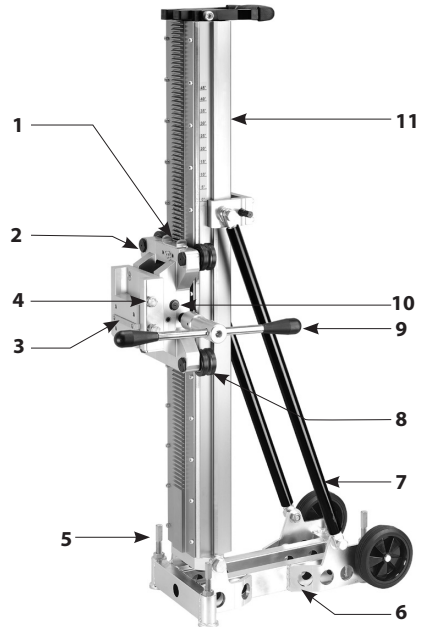
Instruction Manual



Model	S800	S500
Capacity w/o extension spacers (mm)	Ø350	Ø350
Max. Capacity with extension spacers (mm)	Ø800	Ø500
Effective Stroke(mm)	760	690
2nd Crank Gear Reduction	4.0 : 1	3.3 : 1
Dimensions L x W x H (mm)	555 x 275 x 1035	480 x 240 x 1025
Net Weight(kg)	26.5	19.1

1. Carriage Lock Lever
2. Adjustable Roller Axle Bolts
(on left side only)
3. Cradle
4. Cradle Lock Bolt
5. Leveling Bolts
6. Base
7. Buttress Bar
8. Guidance Roller
9. Crank Handle (Mounts on either side and
also doubles as a wrench for the Angle
Lock Clamp Bolt)
10. Clamp Bolt
11. Column

S800



PS:

S800 /2.0M Model:

11. 2.0M column (1760mm stroke)

S800 /2.5M Model:

11. 2.5M column (2260mm stroke)

S500 /1.6M Model :

11. 1.6M column (1390mm stroke)

S350 / 1.5M Model:

11. 1.5M column (1260mm stroke)

S350 / 2.0M Model:

11. 2.0M column (1760mm stroke)

Optional : EXTENSION SPACERS



200mm



150mm



100mm



45mm



60mm clamp bracket for mounting hand-held drilling motors. Bolts directly to the standard mounting spacer

Model	S350	AS200	S170
Capacity (mm)	Ø352	Ø202	Ø170
Effective Stroke(mm)	660	500	540
Dimensions L x W x H (mm)	390 x 248 x 970	361 x 250 x 890	460 x 215 x 815
Net Weight(kg)	14.4	10.5	10.1

S500



S350



AS200



S170



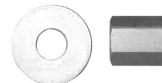
Optional:



AS200 Water Collector



Anchoring Plate
For S350, S500 & S800



Fixing kit M12(concrete)

Fixing kit M10 (brick)



AS200 Extension Mast Bracket

DIAMOND CORE DRILL STAND

Introduction:

This drill stand is designed to mount diamond core drilling motors by using a suitable mounting plate or clamp bracket. A standard 4 bolt mounting spacer is included with this stand. The drill stand guides the motor and diamond core bit so that it is possible to drill perfectly straight cuts in a safe and controlled manner.

The stand is also able to slant so that holes may be cored at an angle as required.

This stand must be securely fastened to the workpiece using a concrete anchor and fixing kit

WARNING: Do not attempt to use this stand if the mounting system does not fit perfectly to the drilling motor.

MOUNTING THE MOTOR TO THE DRILL STAND

Rig-Mounted Type Motors:

If the drill motor is the 4 bolt rig-mounted type, the drill stand's mounting plate must be bolted to the drill motor. The mounting tenon must fit securely in the slot in the back of the drill motor, then evenly tighten the four bolts.

This mounting plate now acts as a secure and accurate coupling between the drill motor and the drill stand.

The mounting plate now fits in the dovetail in the stand's cradle and is secured by the cradle lock bolt.

Hand-Held Type Motors:

If the drill motor is the hand-held type, the clamp bracket must be used. Then the motor's gearcase collar must be mounted in the clamp bracket. Generally, the drill motor's side handle will need to be first removed. To insert, first loosen the clamp bracket using the crank handle as a wrench, then insert the motor, turn to the desired orientation and then securely fasten the clamp bolt.

DRILLING STAND FUNCTIONAL DESCRIPTION

Fastening the drill rig

Once the desired position of the rig is determined, Use a concrete anchor to secure the rig.

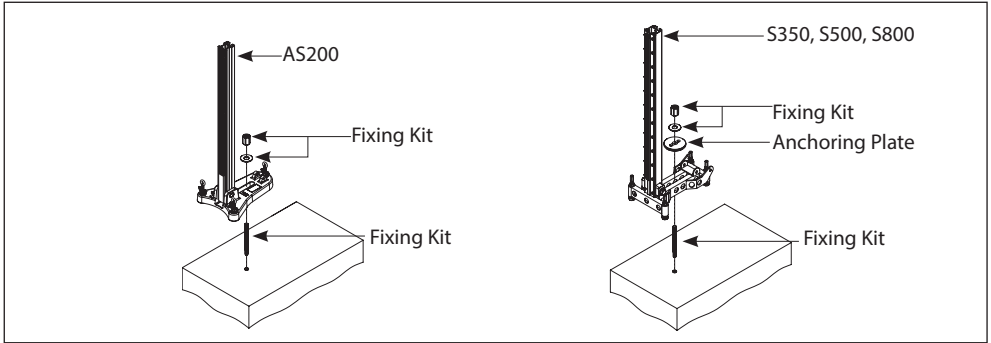
Drill a suitable sized hole for the anchor with a hammer drill.

Drive in the anchor.

Use the long threaded rod with the large washer and nut in the fixing kit to secure the base.

Before fully tightening the nut, use a spirit level to check if the stand is level. If needed, loosen the locknuts and adjust the four leveling bolts to achieve levelness. Then retighten the locknuts.

Now fully tighten the securing nut which affixes the base to the work surface.



WARNING: When anchoring to a brick surface, a special masonry anchor and brick fixing kit must be used. Using a concrete type drop-in anchor in brick could lead to the brick cracking and the anchor loosening!

NOTE: We recommend using the optional Anchoring Plate For Models S350, S500 & S800 for the most secure possible fixing of the base to the workpiece. Place the anchoring plate on the base with the threaded rod through the hole. Then add the washer and nut. Tighten securely.

Note: If mounting on a wall, it is usually more convenient to secure the stand with the motor head removed. Using the 19mm combination wrench, loosen the cradle lock bolt on the carriage to lift the motor head up and away. Once the stand is fixed, the motor head may be re-installed on the stand. Make sure to securely tighten the cradle lock bolt(s).

ADJUSTING THE DRILLING ANGLE

The drilling angle can be tilted from 0 to 45 degrees. To adjust the angle, use the crank handle as a wrench and loosen the angle clamp bolt. Refer to the scale on the column indicating the angle. Adjust to the desired angle and tighten the clamp.

CAUTION: Do not overtighten the clamp. Only tighten the necessary amount to make the clamp secure. Overtightening could distort the column.

AS200 folds down completely for easy storage



CARRIAGE LOCK

On the S350, S500 & S800, Slide the carriage lock lever to the left to lock the carriage in place. Slide the lever to the right to release the carriage. On the AS200, the carriage lock is a thumb screw on the right side of the carriage. Tighten to lock, loosen to release.

CAUTION: Hold the crank lever or motor head whenever releasing the carriage lock. It could slam down causing possible injury or damage to the bit or machine.

REDUCTION GEARING

On the S500 and S800 stands, there are two crank spindles: One spindle is for for standard cranking and one for reduced gear ratio cranking.

The reduced gear ratio allows the operator to drill with greatly reduced effort when using large diameter core bits.

To switch from standard to reduced gear ratio cranking, simply remove the crank handle from the main spindle and connect to the forward spindle on the left side.

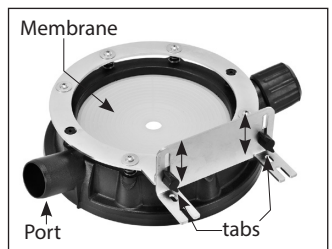
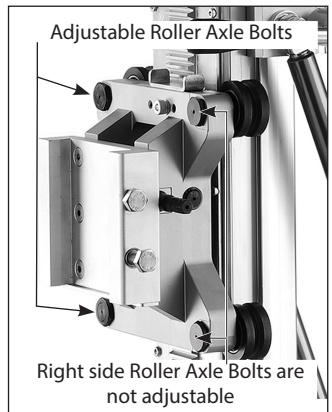
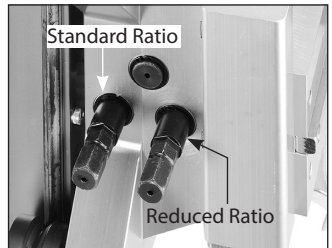
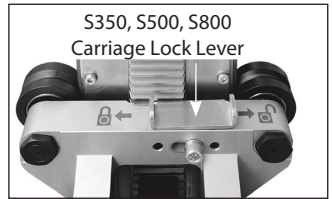
ADJUSTING THE DRILLING STAND GUIDANCE

Loose guidance will cause the bit to run out-of-true and result in poor performance, sticking and possible damage to the bit. If the rollers can be turned by hand with the carriage locked, they are too loose.

To adjust the guidance, the two guide rollers on the left side are on eccentric shafts. Turn the eccentric roller axle bolt until the clearance is taken up on each roller in turn. Turn just enough so that the roller cannot be turned by hand. Now test the tightness of the carriage by cranking it up and down. There should be no free-play, yet no binding throughout its travel.

AS200 MOUNTING THE OPTIONAL WATER COLLECTOR RING

Mount the ring to base by aligning the 2 tabs, adjusting the height, and tightening the thumbscrews. The first time a membrane is used, it must be cut to size by the core bit. For other sizes, other membranes must be prepared in the same fashion. Connect the wet vacuum cleaner to either of the 2 ports and use the plug on the other, unused port.

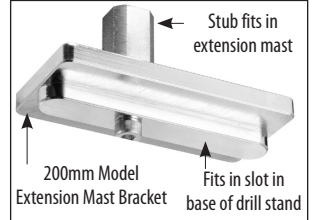


REPLACING MEMBRANES

Flip the water collector ring upside down and remove the 6 screws. This will allow the membrane and the mounting ring to be removed.

AS200 OPTIONAL EXTENSION MAST BRACKET

The extension mast bracket serves as a stable mounting point for the extension mast to press upon. Place the extension mast on the stub of the bracket and the bracket in the slot of the base, then extend the mast to brace it against a solid immovable surface for secure fixing of the drill stand.

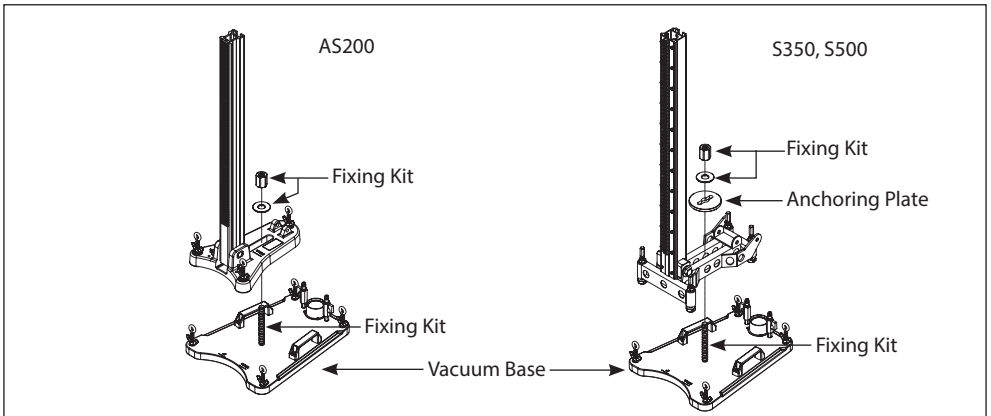
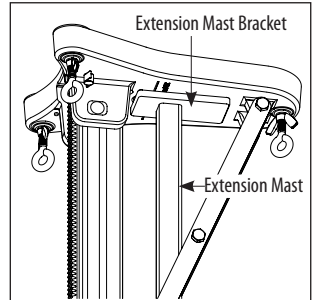


OPTIONAL VACUUM BASE

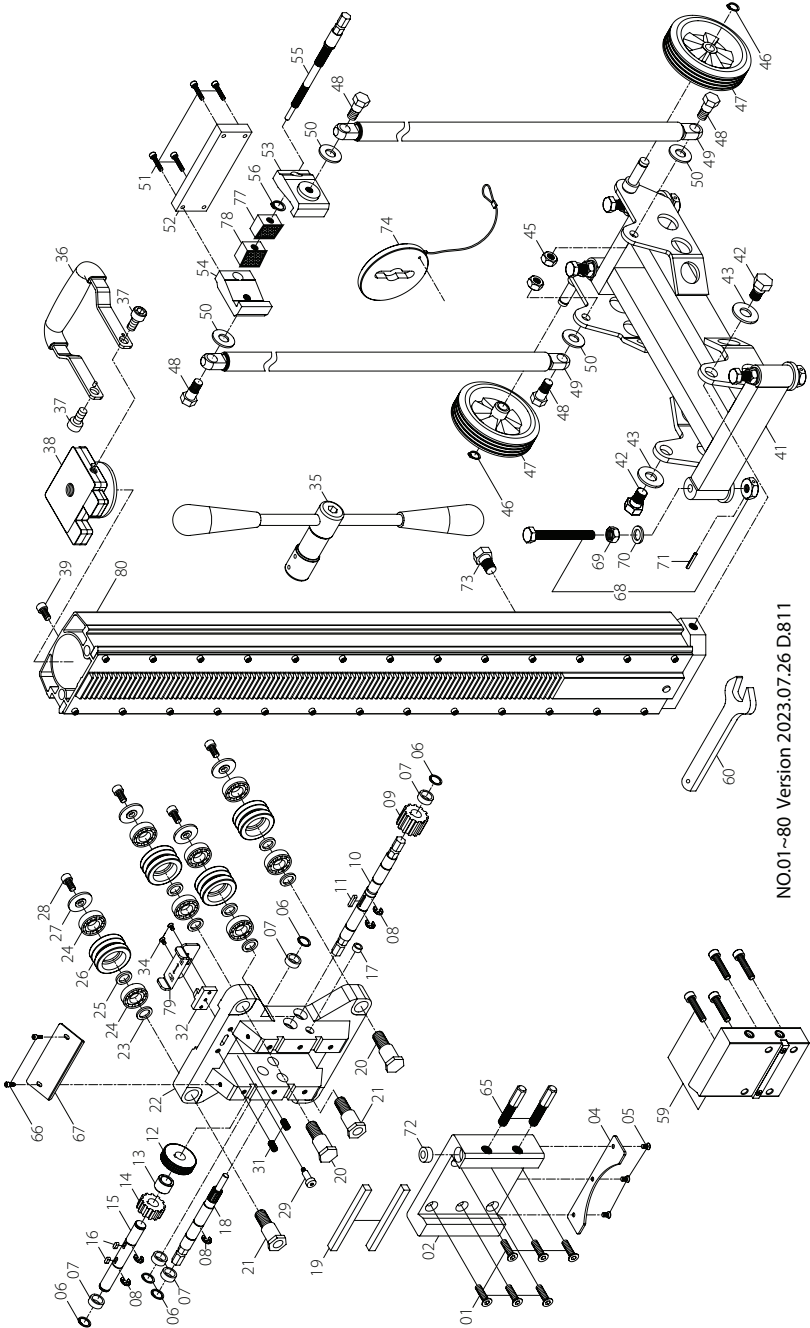
The vacuum base is available for use with the AS200, S350 and S500. Use the fixing kit supplied with the vacuum base to mount the vacuum base to the base of the drill stand. The S350 and S500 should use the anchoring plate. Place the base of the drill stand so that it is centered on the vacuum base. Follow the instructions included with the vacuum base.

WARNING: Always use additional safety chains when drilling horizontally.

WARNING: Never drill inverted when using the vacuum base.



Exploded View (S800mm/1M Model)

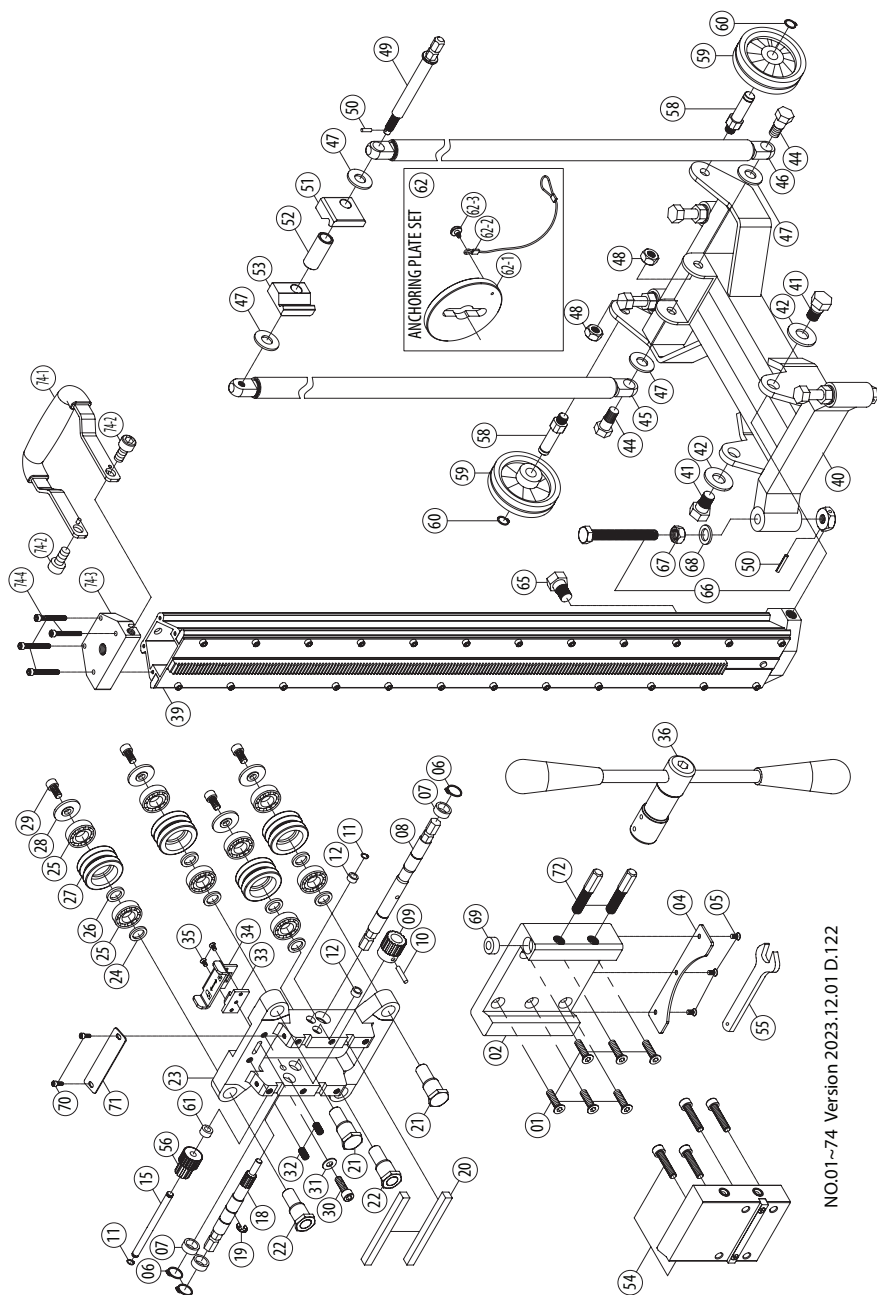


NO.01~80 Version 2023.07.26 D.811

Parts List (S800mm /1M Model)

NO.	Parts Name	Q'TY	NO.	Parts Name	Q'TY
1	FLAT HEAD SOCKET CAP SCREW (M8x30xP1.25)	6	38	TANK COVER LID	1
2	CRADLE	1	39	SOCKET CAP SCREW (M5x10xP0.8)	1
4	CRADLE PLATE	1	41	BASE	1
5	FLAT HEAD MACHINE SCREW (M5x12xP0.8)	3	42	SHOULDER BOLT	2
6	INTERNAL CIRCLIP (IS15)	5	43	FLAT WASHER (5/8"xØ30x3)	2
7	BUSHING (Ø15xØ20x10)	5	45	NYLOCK NUT (M12xP1.75)	2
8	E-CLIP (E-12)	5	46	EXTERNAL CIRCLIP (S-13)	2
9	CRANK GEAR (M2.5x12T)	1	47	WHEEL	2
10	CRANK SPINDLE	1	48	SHOULDER BOLT	4
11	PARALLEL KEY (4x4x20)	1	49	BUTTRESS BAR (650MM)	2
12	SPINDLE GEAR (M1.0x46T)	1	50	FLAT WASHER (Ø14.3xØ32x2.5)	4
13	SHAFT RACE (Ø15xØ22x15)	1	51	SOCKET CAP SCREW (M5x25xP0.8)	4
14	SPINDLE GEAR (M2.5x12T)	1	52	CLAMP PLATE	1
15	INTERMEDIATE SHAFT	1	53	CLAMP CLAW-LEFT	1
16	PARALLEL KEY (4x4x10)	2	54	CLAMP CLAW-RIGHT	1
17	BUSHING (Ø8xØ12x6)	1	55	ANDLE CLAMP BOLT	1
18	REDUCTION CRANK PINION	1	56	EXTERNAL CIRCLIP (S-15)	1
19	MOUNTING TENON (10x10x115)	2	59	MOUNTING SPACER (130mm)	1
20	AXLE SHAFT	2	60	WRENCH (M19)	1
21	ECCENTRIC SHAFT	2	65	CRADLE LOCK BOLT (M12xP1.75x70L)	2
22	CARRIAGE	1	66	SOCKET CAP SCREW (M5x8xP0.8)	2
23	AXLE SPACER C	4	67	FENCE	1
24	BALL BEARING (6202)	8	68	LEVELING SCREW	4
25	AXLE SPACER B	4	69	HEX NUT (M12xP1.75)	4
26	GUIDE ROLLER	4	70	FLAT WASHER (Ø12.2xØ23x2)	4
27	AXLE SPACER A	4	71	ROLL PIN (Ø4x25)	4
28	SOCKET CAP SCREW (M8x16xP1.25)	4	72	BULLS-EYE LEVEL	1
29	FENCE PIVOT BOLT (M5xP0.8x23.7L)	1	73	SHOULDER BOLT	1
31	DETENT UNIT (M8x16.75xP1.25)	2	74	ANCHORING PLATE SET	1
32	CARRIAGE LOCK	1	77	CLAMP WEDGE-LEFT	1
34	FLAT HEAD MACHINE SCREW (M4x8xP0.7)	2	78	CLAMP WEDGE-RIGHT	1
35	CRANK HANDLE	1	79	CARRIAGE LOCK LEVER	1
36	FRONT HANDLE	1	80	COLUMN (1000MM)	1
37	SOCKET CAP SCREW (M12x16xP1.75)	2			

Exploded View (S500mm/1M Model)

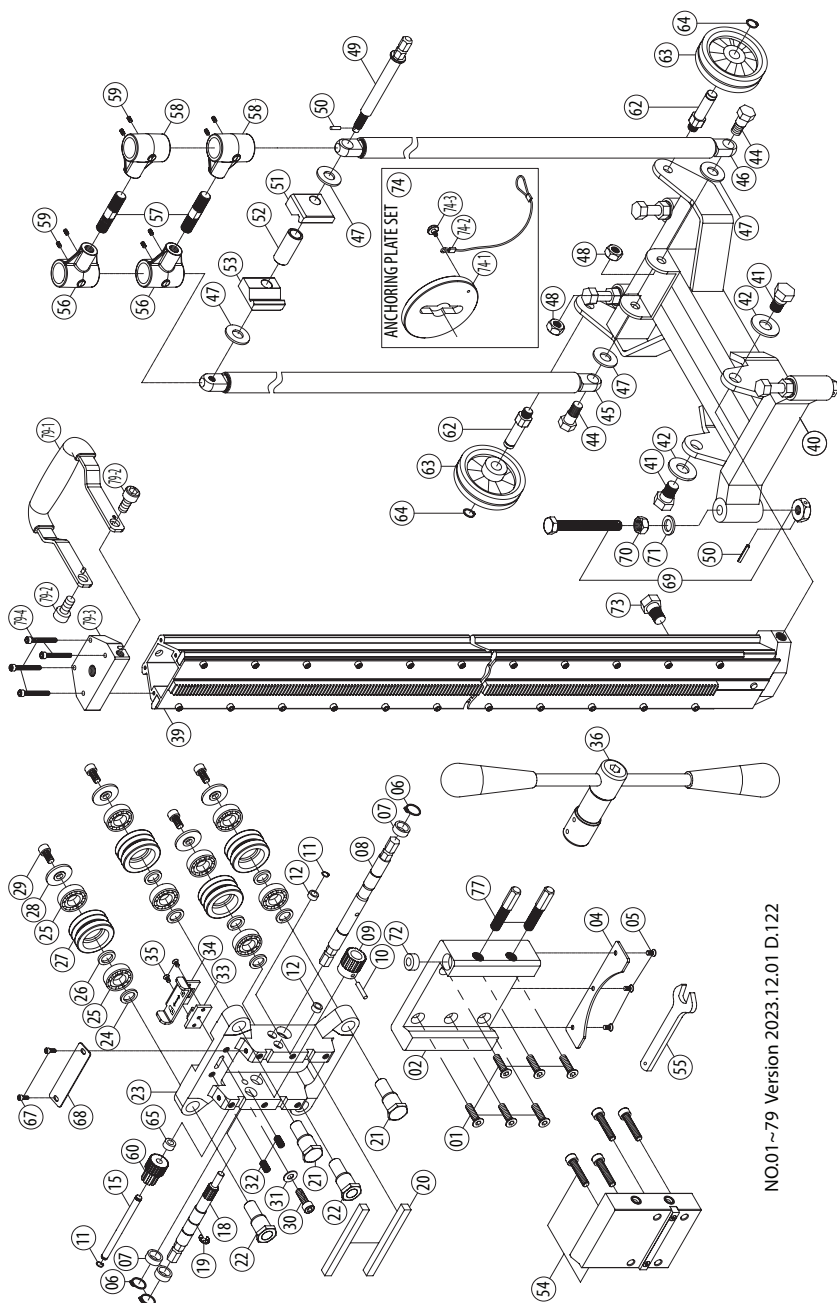


NO.01~74 Version 2023.12.01 D.122

Parts List (S500mm/1M Model)

NO.	Parts Name	Q'TY	NO.	Parts Name	Q'TY
1	FLAT HEAD SOCKET CAP SCREW (M8x30xP1.25)	6	41	SHOULDER BOLT	2
2	CRADLE	1	42	FLAT WASHER (5/8"xØ30x3)	2
4	CRADLE PLATE	1	44	SHOULDER BOLT	2
5	FLAT HEAD MACHINE SCREW (M5x12xP0.8)	3	45	BUTTRESS BAR (L-650MM)	1
6	EXTERNAL CIRCLIP (S-15)	3	46	BUTTRESS BAR (R-650MM)	1
7	BUSHING (Ø15xØ20x10)	3	47	FLAT WASHER (Ø14.3xØ32x2.5)	4
8	CRANK SPINDLE	1	48	NYLOCK NUT (M12xP1.75)	2
9	CRANK GEAR (M1.5x16T)	1	49	ANGLE LOCK	1
10	ROLL PIN (Ø5x25)	1	50	ROLL PIN (Ø4x25)	5
11	EXTERNAL CIRCLIP (S-8)	2	51	CLAMP CLAW-LEFT	1
12	BUSHING (Ø8xØ12x6)	2	52	SPACER	1
15	INTERMEDIATE SHAFT	1	53	CLAMP CLAW-RIGHT	1
18	REDUCTION CRANK PINION	1	54	MOUNTING SPACER (130mm)	1
19	E-CLIP (E-12)	1	55	WRENCH (M19)	1
20	MOUNTING TENON (10x10x115)	2	56	REDUCTION GEAR SET	1
21	AXLE SHAFT	2	58	ROLLER AXLE	2
22	ECCENTRIC SHAFT	2	59	WHEEL	2
23	CARRIAGE	1	60	EXTERNAL CIRCLIP (S-13)	2
24	AXLE SPACER C	4	61	HEAD LOCKING KNOB (Ø8xØ14x7.5)	1
25	BALL BEARING (6202)	8	62	ANCHORING PLATE SET	1
26	AXLE SPACER B	4	65	SHOULDER BOLT	1
27	GUIDE ROLLER	4	66	LEVELING SCREW	4
28	AXLE SPACER A	4	67	HEX NUT (M12xP1.75)	4
29	SOCKET CAP SCREW (M8x16xP1.25)	4	68	FLAT WASHER (Ø12.2xØ23x2)	4
30	SOCKET CAP SCREW (M5x20xP0.8)	1	69	BULLS-EYE LEVEL	1
31	FLAT WASHER (Ø5xØ12x1)	1	70	SOCKET CAP SCREW (M5x10xP0.8)	2
32	DETENT UNIT (M8x16.75xP1.25)	2	71	FENCE	1
33	CARRIAGE LOCK	1	72	CRADLE LOCK BOLT (M12xP1.75x70L)	2
34	CARRIAGE LOCK LEVER	1	74	AUXILIARY HANDLE SET	1
35	FLAT HEAD MACHINE SCREW (M4x6xP0.7)	2	74-1	FRONT HANDLE	1
36	CRANK HANDLE	1	74-2	SOCKET CAP SCREW (M12x16xP1.75)	2
39	COLUMN (900MM)	1	74-3	COLUMN CAP	1
40	BASE	1	74-4	SOCKET CAP SCREW (M5x35xP0.8)	4

Exploded View (S500mm/1.6M Model)

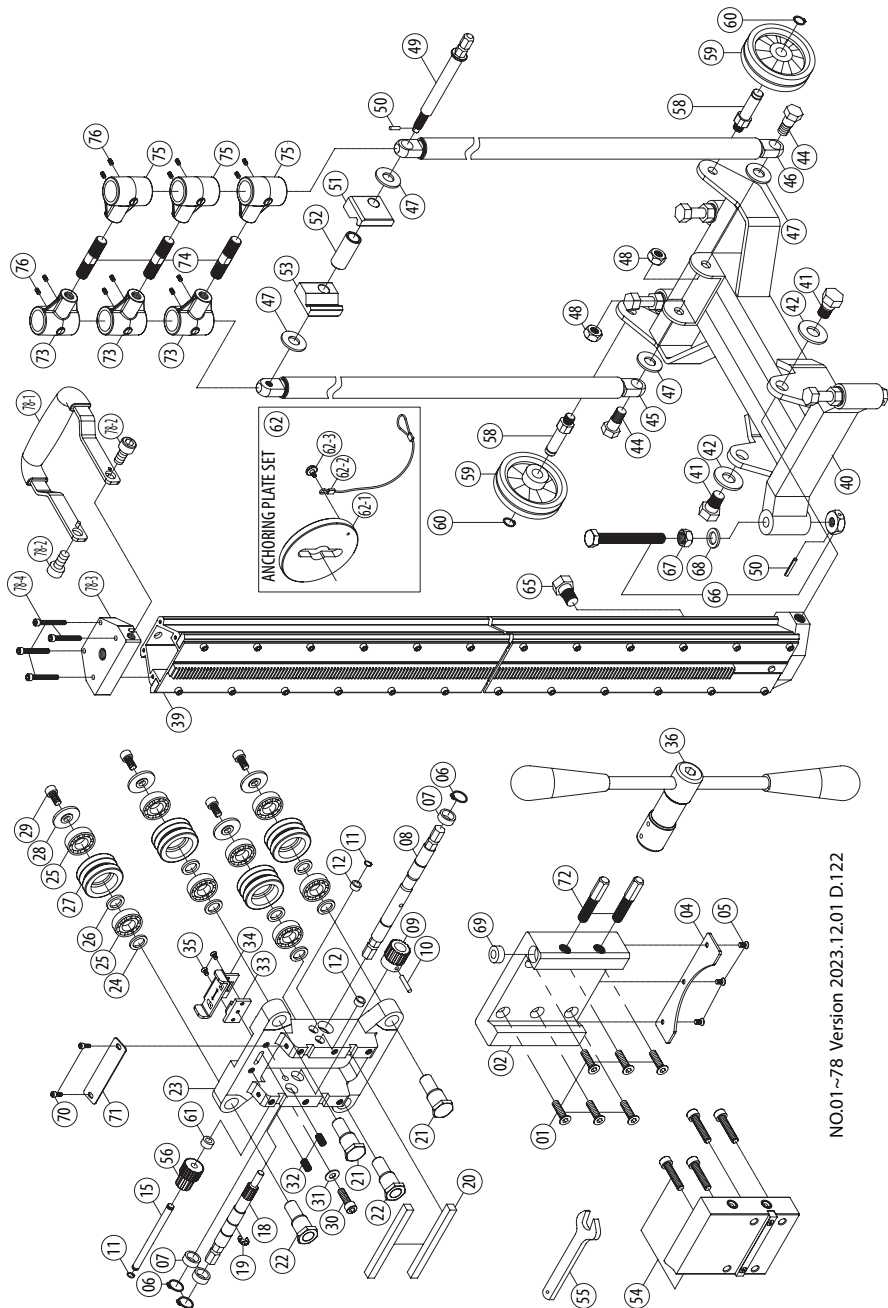


NO.01~79 Version 2023.12.01 D.122

Parts List (S500mm/1.6M Model)

NO.	Parts Name	Q'TY	NO.	Parts Name	Q'TY
1	FLAT HEAD SOCKET CAP SCREW (M8x30xP1.25)	6	44	SHOULDER BOLT	2
2	CRADLE	1	45	BUTTRESS BAR (L-1000MM)	1
4	CRADLE PLATE	1	46	BUTTRESS BAR (R-1000MM)	1
5	FLAT HEAD MACHINE SCREW (M5x12xP0.8)	3	47	FLAT WASHER (Ø14.3xØ32x2.5)	4
6	EXTERNAL CIRCLIP (S-15)	3	48	NYLOCK NUT (M12xP1.75)	2
7	BUSHING (Ø15xØ20x10)	3	49	ANGLE LOCK	1
8	CRANK SPINDLE	1	50	ROLL PIN (Ø4x25)	5
9	CRANK GEAR (M1.5x16T)	1	51	CLAMP CLAW-LEFT	1
10	ROLL PIN (Ø5x25)	1	52	SPACER	1
11	EXTERNAL CIRCLIP (S-8)	2	53	CLAMP CLAW-RIGHT	1
12	BUSHING (Ø8xØ12x6)	2	54	MOUNTING SPACER (130mm)	1
15	INTERMEDIATE SHAFT	1	55	WRENCH (M19)	1
18	REDUCTION CRANK PINION	1	56	BRACING COLLAR-L	2
19	E-CLIP (E-12)	1	57	TURNBUCKLE SHAFT (M14xP2.0x60L)	2
20	MOUNTING TENON (10x10x115)	2	58	BRACING COLLAR-R	2
21	AXLE SHAFT	2	59	SOCKET SET SCREW (M5x6xP0.8)	8
22	ECCENTRIC SHAFT	2	60	REDUCTION GEAR SET	1
23	CARRIAGE	1	62	ROLLER AXLE	2
24	AXLE SPACER C	4	63	WHEEL	2
25	BALL BEARING (6202)	8	64	EXTERNAL CIRCLIP (S-13)	2
26	AXLE SPACER B	4	65	HEAD LOCKING KNOB (Ø8xØ14x7.5)	1
27	GUIDE ROLLER	4	67	SOCKET CAP SCREW (M5x10xP0.8)	2
28	AXLE SPACER A	4	68	FENCE	1
29	SOCKET CAP SCREW (M8x16xP1.25)	4	69	LEVELING SCREW	4
30	SOCKET CAP SCREW (M5x20xP0.8)	1	70	HEX NUT (M12xP1.75)	4
31	FLAT WASHER (Ø5xØ12x1)	1	71	FLAT WASHER (Ø12.2xØ23x2)	4
32	DETENT UNIT (M8x16.75xP1.25)	2	72	BULLS-EYE LEVEL	1
33	CARRIAGE LOCK	1	73	SHOULDER BOLT	1
34	CARRIAGE LOCK LEVER	1	74	ANCHORING PLATE SET	1
35	FLAT HEAD MACHINE SCREW (M4x6xP0.7)	2	77	CRADLE LOCK BOLT (M12xP1.75x70L)	2
36	CRANK HANDLE	1	79	AUXILIARY HANDLE SET	1
39	COLUMN (1600MM)	1	79-1	FRONT HANDLE	1
40	BASE	1	79-2	SOCKET CAP SCREW (M12x16xP1.75)	2
41	SHOULDER BOLT	2	79-3	COLUMN CAP	1
42	FLAT WASHER (5/8"xØ30x3)	2	79-4	SOCKET CAP SCREW (M5x35xP0.8)	4

Exploded View (S500mm/2M Model)

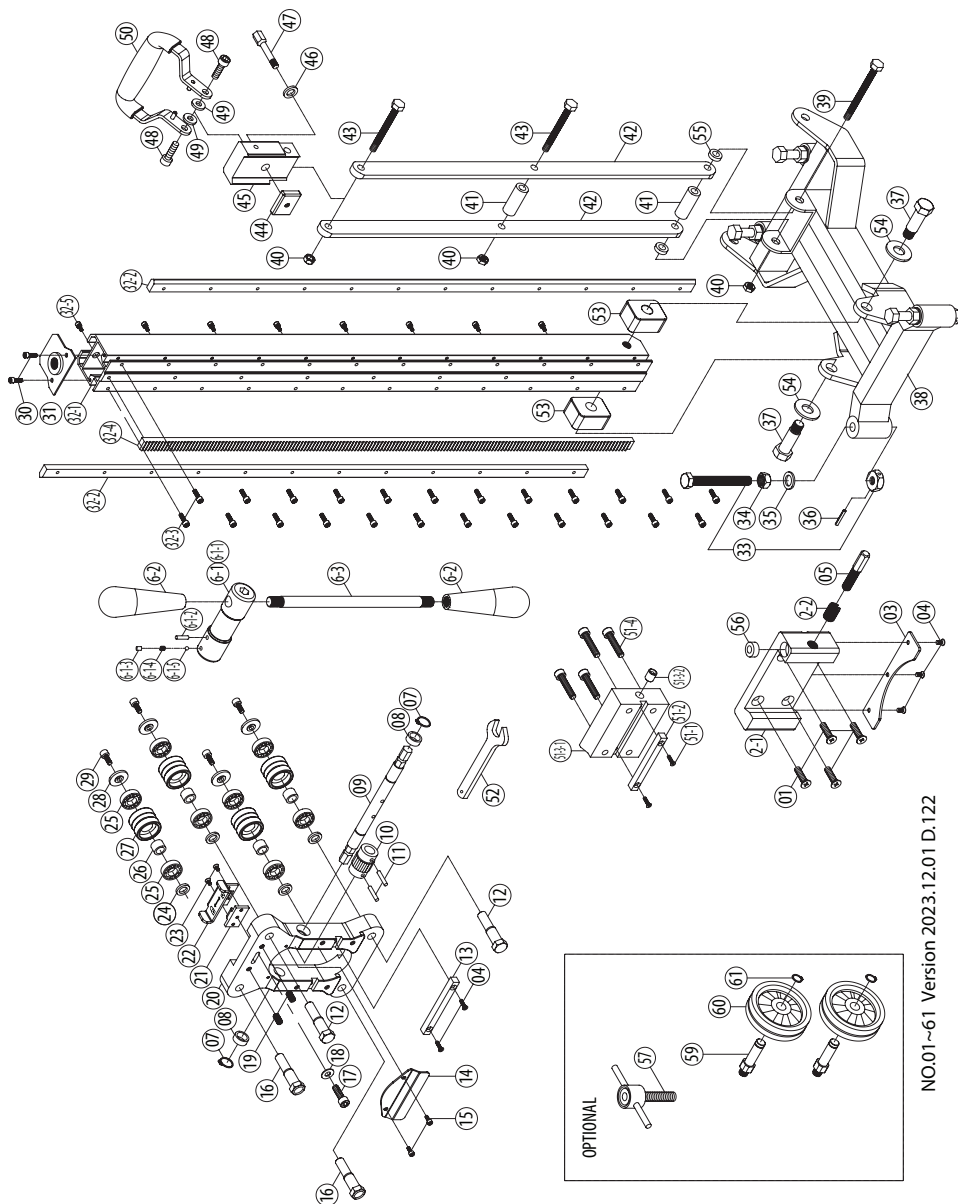


NO.01~78 Version 2023.12.01 D.122

Parts List (S500mm/2M Model)

NO.	Parts Name	Q'TY	NO.	Parts Name	Q'TY
1	FLAT HEAD SOCKET CAP SCREW (M8x30xP1.25)	6	44	SHOULDER BOLT	2
2	CRADLE	1	45	BUTTRESS BAR (L-1600MM)	1
4	CRADLE PLATE	1	46	BUTTRESS BAR (R-1600MM)	1
5	FLAT HEAD MACHINE SCREW (M5x12xP0.8)	3	47	FLAT WASHER (Ø14.3xØ32x2.5)	4
6	EXTERNAL CIRCLIP (S-15)	3	48	NYLOCK NUT (M12xP1.75)	2
7	BUSHING (Ø15xØ20x10)	3	49	ANGLE LOCK	1
8	CRANK SPINDLE	1	50	ROLL PIN (Ø4x25)	5
9	CRANK GEAR (M1.5x16T)	1	51	CLAMP CLAW-LEFT	1
10	ROLL PIN (Ø5x25)	1	52	SPACER	1
11	EXTERNAL CIRCLIP (S-8)	2	53	CLAMP CLAW-RIGHT	1
12	BUSHING (Ø8xØ12x6)	2	54	MOUNTING SPACER (130mm)	1
15	INTERMEDIATE SHAFT	1	55	WRENCH (M19)	1
18	REDUCTION CRANK PINION	1	56	REDUCTION GEAR SET	1
19	E-CLIP (E-12)	1	58	ROLLER AXLE	2
20	MOUNTING TENON (10x10x115)	2	59	WHEEL	2
21	AXLE SHAFT	2	60	EXTERNAL CIRCLIP (S-13)	2
22	ECCENTRIC SHAFT	2	61	HEAD LOCKING KNOB (Ø8xØ14x7.5)	1
23	CARRIAGE	1	62	ANCHORING PLATE SET	1
24	AXLE SPACER C	4	65	SHOULDER BOLT	1
25	BALL BEARING (6202)	8	66	LEVELING SCREW	4
26	AXLE SPACER B	4	67	HEX NUT (M12xP1.75)	4
27	GUIDE ROLLER	4	68	FLAT WASHER (Ø12.2xØ23x2)	4
28	AXLE SPACER A	4	69	BULLS-EYE LEVEL	1
29	SOCKET CAP SCREW (M8x16xP1.25)	4	70	SOCKET CAP SCREW (M5x10xP0.8)	2
30	SOCKET CAP SCREW (M5x20xP0.8)	1	71	FENCE	1
31	FLAT WASHER (Ø5xØ12x1)	1	72	CRADLE LOCK BOLT (M12xP1.75x70L)	2
32	DETENT UNIT (M8x16.75xP1.25)	2	73	BRACING COLLAR-L	3
33	CARRIAGE LOCK	1	74	TURNBUCKLE SHAFT (M14xP2.0x60L)	3
34	CARRIAGE LOCK LEVER	1	75	BRACING COLLAR-R	3
35	FLAT HEAD MACHINE SCREW (M4x6xP0.7)	2	76	SOCKET SET SCREW (M5x6xP0.8)	12
36	CRANK HANDLE	1	78	AUXILIARY HANDLE SET	1
39	COLUMN (2000MM)	1	78-1	FRONT HANDLE	1
40	BASE	1	78-2	SOCKET CAP SCREW (M12x16xP1.75)	2
41	SHOULDER BOLT	2	78-3	COLUMN CAP	1
42	FLAT WASHER (5/8"xØ30x3)	2	78-4	SOCKET CAP SCREW (M5x35xP0.8)	4

Exploded View (S350mm / 1M Model)

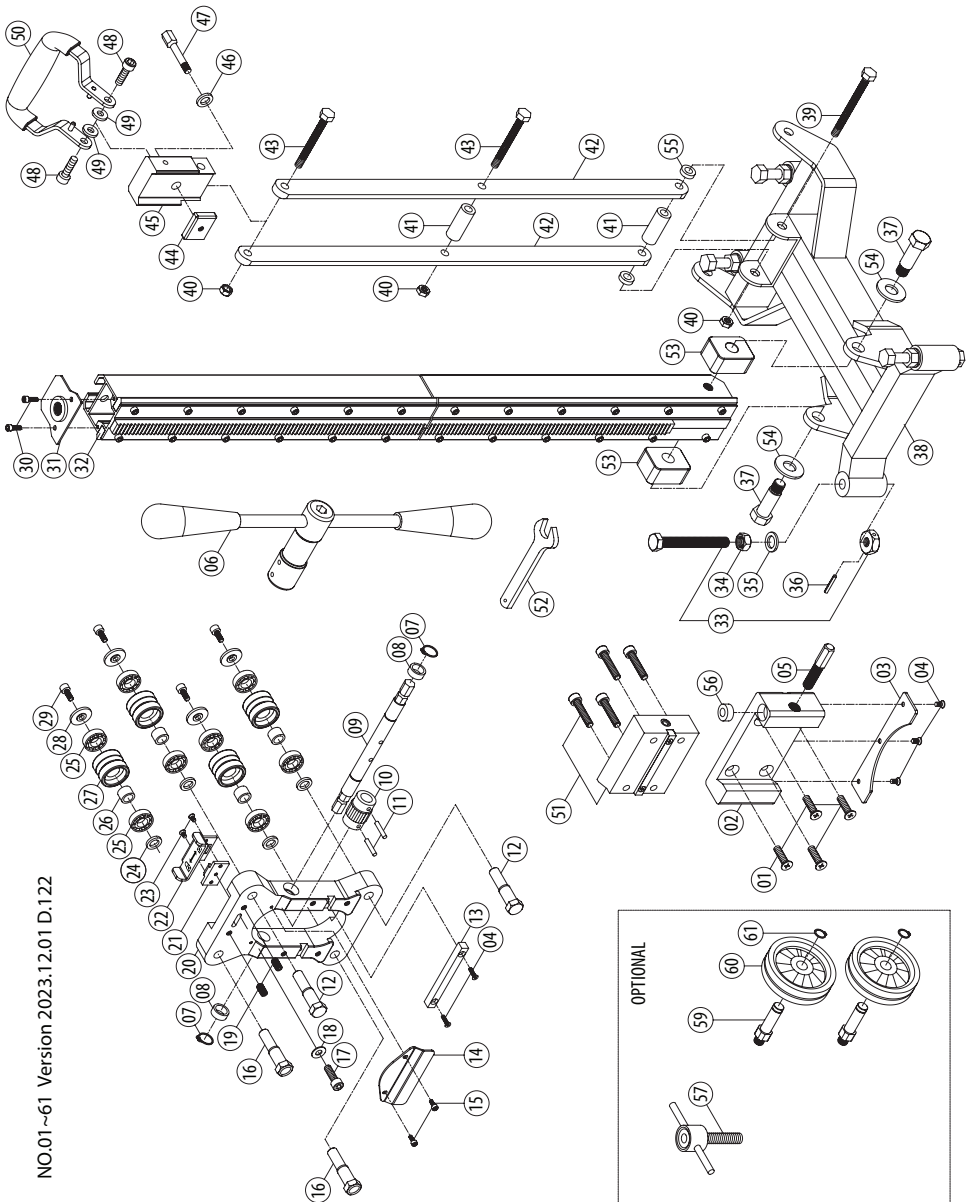


NO.01~61 Version 2023.12.01 D.122

Parts List (S350mm / 1M Model)

NO.	Parts Name	Q'TY	NO.	Parts Name	Q'TY
1	FLAT HEAD SOCKET CAP SCREW (M8x30xP1.25)	4	31	COLUMN CAP	1
2	CRADLE	1	32	COLUMN (900MM)	1
3	CRADLE PLATE	1	33	LEVELING SCREW	4
4	FLAT HEAD MACHINE SCREW (M5x10xP0.8)	5	34	HEX NUT (M12xP1.75)	4
5	CRADLE LOCK BOLT (M12xP1.75x70L)	1	35	FLAT WASHER (Ø12.2xØ23x2)	4
6	CRANK HANDLE	1	36	ROLL PIN (Ø4x25)	4
7	EXTERNAL CIRCLIP (S-15)	2	37	SHOULDER BOLT	2
8	BUSHING (Ø15xØ20x10)	2	38	BASE	1
9	CRANK SPINDLE	1	39	HEX BOLT (M10x100LxP1.5)	1
10	CRANK GEAR (M1.5x16T)	1	40	NYLOCK NUT (M10xP1.5)	3
11	ROLL PIN (Ø5x25)	2	41	SPACER	2
12	AXLE SHAFT	2	42	CONNECTING SUPPORT	2
13	MOUNTING TENON (10x10x100)	1	43	HEX BOLT (M10x75LxP1.5)	2
14	FENCE	1	44	LOCK PLATE	1
15	SOCKET CAP SCREW (M5x8xP0.8)	2	45	BUTTRESS LOCK	1
16	ECCENTRIC SHAFT	2	46	FLAT WASHER (Ø10xØ23x2)	1
17	SOCKET CAP SCREW (M5x20xP0.8)	1	47	ANGLE LOCK CLAMP	1
18	FLAT WASHER (Ø5xØ12x1)	1	48	SOCKET CAP SCREW (M8x16xP1.25)	2
19	DETENT UNIT (M8x16.75xP1.25)	2	49	FLAT WASHER (Ø8xØ20x3)	2
20	CARRIAGE	1	50	FRONT HANDLE	1
21	CARRIAGE LOCK	1	51	MOUNTING SPACER	1
22	CARRIAGE LOCK LEVER	1	52	WRENCH (M19)	1
23	FLAT HEAD MACHINE SCREW (M4x6xP0.7)	2	53	FOOT PLATE	2
24	AXLE SPACER B	4	54	FLAT WASHER (5/8"xØ30x3)	2
25	BALL BEARING (6001)	8	55	SPACER	2
26	AXLE SPACER C	4	56	BULLS-EYE LEVEL	1
27	GUIDE ROLLER	4	57	T-HANDLE VISE SCREW (M16xP2.0)	1
28	AXLE SPACER A	4	59	ROLLER AXLE	2
29	SOCKET CAP SCREW (M6x16xP1.0)	4	60	WHEEL	2
30	SOCKET CAP SCREW (M5x10xP0.8)	2	61	EXTERNAL CIRCLIP (S-13)	2

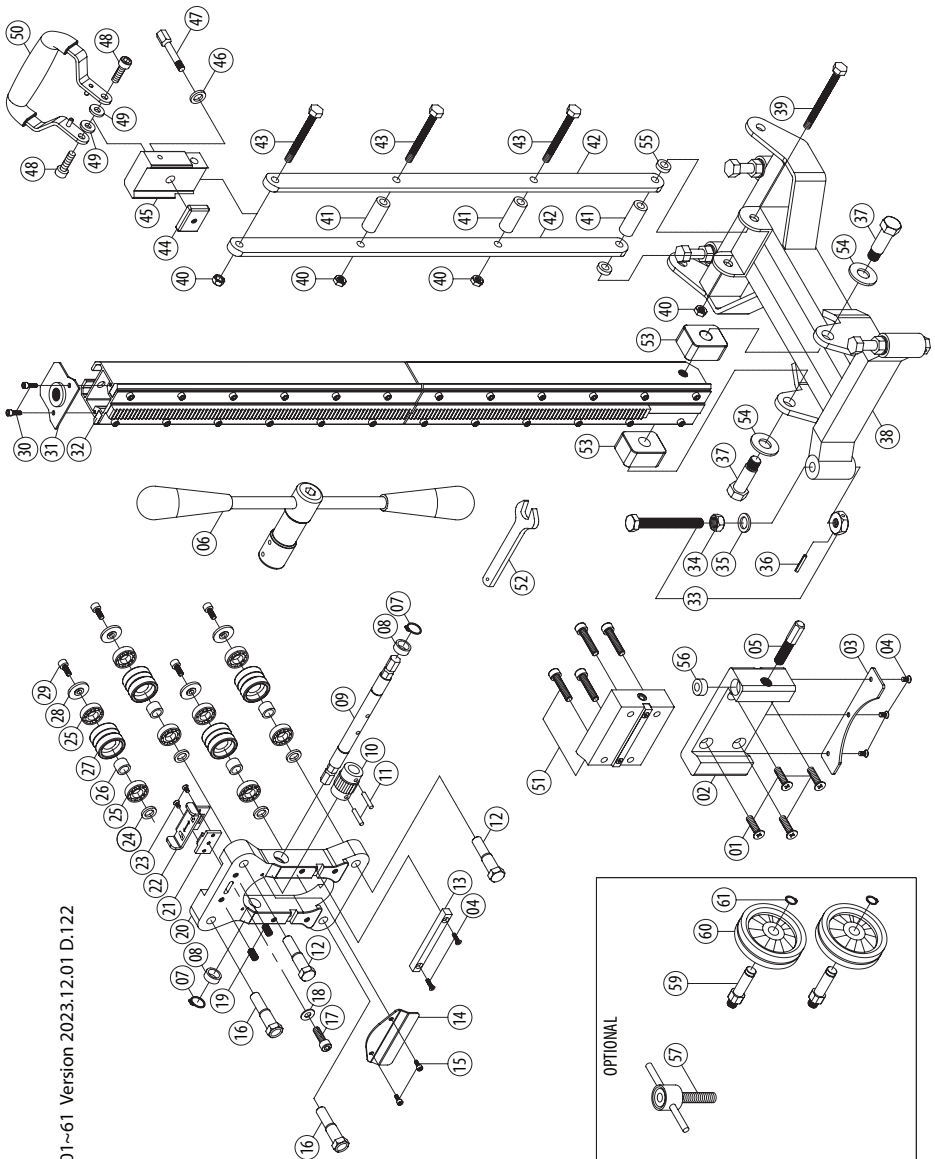
Exploded View (S350mm / 1.5M Model)



Parts List (S350mm / 1.5M Model)

NO.	Parts Name	Q'ty	NO.	Parts Name	Q'ty
1	FLAT HEAD SOCKET CAP SCREW (M8x30xP1.25)	4	31	COLUMN CAP	1
2	CRADLE	1	32	COLUMN (1500MM)	1
3	CRADLE PLATE	1	33	LEVELING SCREW	4
4	FLAT HEAD MACHINE SCREW (M5x10xP0.8)	5	34	HEX NUT (M12xP1.75)	4
5	CRADLE LOCK BOLT (M12xP1.75x70L)	1	35	FLAT WASHER (Ø12.2xØ23x2)	4
6	CRANK HANDLE	1	36	ROLL PIN (Ø4x25)	4
7	EXTERNAL CIRCLIP (S-15)	2	37	SHOULDER BOLT	2
8	BUSHING (Ø15xØ20x10)	2	38	BASE	1
9	CRANK SPINDLE	1	39	HEX BOLT (M10x100LxP1.5)	1
10	CRANK GEAR (M1.5x16T)	1	40	NYLOCK NUT (M10xP1.5)	3
11	ROLL PIN (Ø5x25)	2	41	SPACER	2
12	AXLE SHAFT	2	42	CONNECTING SUPPORT	2
13	MOUNTING TENON (10x10x100)	1	43	HEX BOLT (M10x75LxP1.5)	2
14	FENCE	1	44	LOCK PLATE	1
15	SOCKET CAP SCREW (M5x8xP0.8)	2	45	BUTTRESS LOCK	1
16	ECCENTRIC SHAFT	2	46	FLAT WASHER (Ø10xØ23x2)	1
17	SOCKET CAP SCREW (M5x20xP0.8)	1	47	ANGLE LOCK CLAMP	1
18	FLAT WASHER (Ø5xØ12x1)	1	48	SOCKET CAP SCREW (M8x16xP1.25)	2
19	DETENT UNIT (M8x16.75xP1.25)	2	49	FLAT WASHER (Ø8xØ20x3)	2
20	CARRIAGE	1	50	FRONT HANDLE	1
21	CARRIAGE LOCK	1	51	MOUNTING SPACER	1
22	CARRIAGE LOCK LEVER	1	52	WRENCH (M19)	1
23	FLAT HEAD MACHINE SCREW (M4x6xP0.7)	2	53	FOOT PLATE	2
24	AXLE SPACER B	4	54	FLAT WASHER (5/8"xØ30x3)	2
25	BALL BEARING (6001)	8	55	SPACER	2
26	AXLE SPACER C	4	56	BULLS-EYE LEVEL	1
27	GUIDE ROLLER	4	57	T-HANDLE VISE SCREW (M16xP2.0)	1
28	AXLE SPACER A	4	59	ROLLER AXLE	2
29	SOCKET CAP SCREW (M6x16xP1.0)	4	60	WHEEL	2
30	SOCKET CAP SCREW (M5x10xP0.8)	2	61	EXTERNAL CIRCLIP (S-13)	2

Exploded View (S350mm / 2M Model)



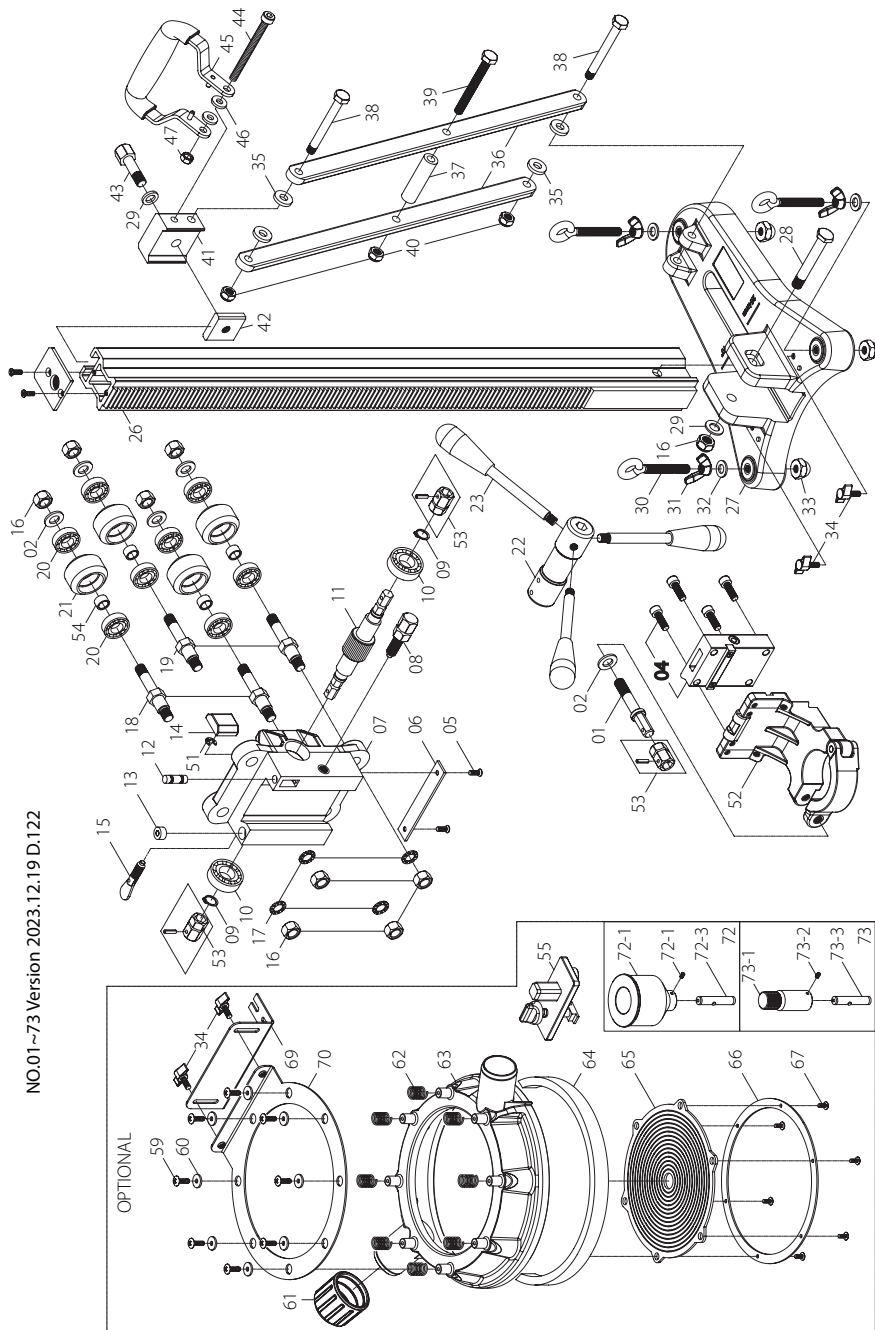
NO.01~61 Version 2023.12.01 D.122

Parts List (S350mm / 2M Model)

NO.	Parts Name	Q'TY	NO.	Parts Name	Q'TY
1	FLAT HEAD SOCKET CAP SCREW (M8x30xP1.25)	4	31	COLUMN CAP	1
2	CRADLE	1	32	COLUMN (2000MM)	1
3	CRADLE PLATE	1	33	LEVELING SCREW	4
4	FLAT HEAD MACHINE SCREW (M5x10xP0.8)	5	34	HEX NUT (M12xP1.75)	4
5	CRADLE LOCK BOLT (M12xP1.75x70L)	1	35	FLAT WASHER (Ø12.2xØ23x2)	4
6	CRANK HANDLE	1	36	ROLL PIN (Ø4x25)	4
7	EXTERNAL CIRCLIP (S-15)	2	37	SHOULDER BOLT	2
8	BUSHING (Ø15xØ20x10)	2	38	BASE	1
9	CRANK SPINDLE	1	39	HEX BOLT (M10x100LxP1.5)	1
10	CRANK GEAR (M1.5x16T)	1	40	NYLOCK NUT (M10xP1.5)	4
11	ROLL PIN (Ø5x25)	2	41	SPACER	3
12	AXLE SHAFT	2	42	CONNECTING SUPPORT	2
13	MOUNTING TENON (10x10x100)	1	43	HEX BOLT (M10x75LxP1.5)	3
14	FENCE	1	44	LOCK PLATE	1
15	SOCKET CAP SCREW (M5x8xP0.8)	2	45	BUTTRESS LOCK	1
16	ECCENTRIC SHAFT	2	46	FLAT WASHER (Ø10xØ23x2)	1
17	SOCKET CAP SCREW (M5x20xP0.8)	1	47	ANGLE LOCK CLAMP	1
18	FLAT WASHER (Ø5xØ12x1)	1	48	SOCKET CAP SCREW (M8x16xP1.25)	2
19	DETENT UNIT (M8x16.75xP1.25)	2	49	FLAT WASHER (Ø8xØ20x3)	2
20	CARRIAGE	1	50	FRONT HANDLE	1
21	CARRIAGE LOCK	1	51	MOUNTING SPACER	1
22	CARRIAGE LOCK LEVER	1	52	WRENCH (M19)	1
23	FLAT HEAD MACHINE SCREW (M4x6xP0.7)	2	53	FOOT PLATE	2
24	AXLE SPACER B	4	54	FLAT WASHER (5/8"xØ30x3)	2
25	BALL BEARING (6001)	8	55	SPACER	2
26	AXLE SPACER C	4	56	BULLS-EYE LEVEL	1
27	GUIDE ROLLER	4	57	T-HANDLE VISE SCREW (M16xP2.0)	1
28	AXLE SPACER A	4	59	ROLLER AXLE	2
29	SOCKET CAP SCREW (M6x16xP1.0)	4	60	WHEEL	2
30	SOCKET CAP SCREW (M5x10xP0.8)	2	61	EXTERNAL CIRCLIP (S-13)	2

Exploded View (AS200 Model)

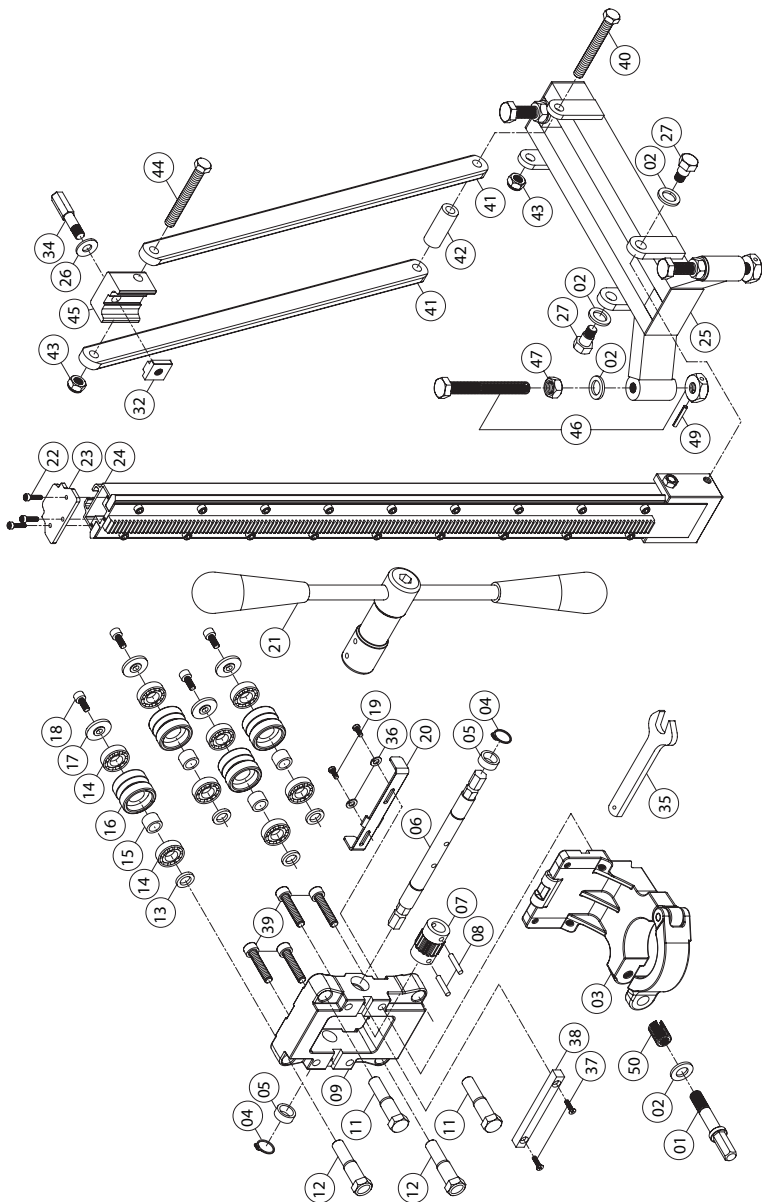
NO.01~73 Version 2023.12.19 D.122



Parts List (AS200 Model)

NO.	Parts Name	Q'ty	NO.	Parts Name	Q'ty
1	CLAMP SCREW (M12)	1	35	FLAT WASHER	4
2	FLAT WASHER (Ø12.2xØ23x2)	5	36	BUTTRESS BAR	2
4	MOUNTING SPACER	1	37	SPACER	1
5	FLAT HEAD MACHINE SCREW (M5x12xP0.8)	4	38	PIVOT BOLT	2
6	CRADLE PLATE	1	39	HEX BOLT (M10x95LxP1.5)	1
7	CARRIAGE	1	40	NYLOCK NUT (M10xP1.5)	3
8	LOCK SCREW	1	41	BUTTRESS LOCK	1
9	EXTERNAL CIRCLIP (S-15)	2	42	LOCK PLATE	1
10	BALL BEARING (6002)	2	43	ANGLE LOCK CLAMP	1
11	CRANK SPINDLE	1	44	SOCKET CAP SCREW (M8x85xP1.25)	1
12	BUBBLE LEVEL	1	45	FRONT HANDLE	1
13	BULLS-EYE LEVEL	1	46	FLAT WASHER (Ø8xØ20x3)	2
14	PLASTIC PAD	1	47	NYLOCK NUT (M8xP1.25)	1
15	SWIVEL LOCK TAB (M10xP1.5)	1	51	E-CLIP (E-7)	1
16	NYLOCK NUT (M12xP1.75)	9	52	CLAMP BRACKET (Ø60)	1
17	EXTERNAL STAR WASHER (M12)	4	53	HEX ADAPTOR	3
18	ECCENTRIC SHAFT	2	54	HEAD LOCKING KNOB (Ø12xØ16x9.1)	4
19	ROLLER AXLE	2	55	EXTENSION MAST BRACKET	1
20	BALL BEARING (6201)	8	59	SOCKET CAP SCREW (M5x12xP0.8)	8
21	GUIDE ROLLER	4	60	FLAT WASHER (Ø5xØ19x1.2)	8
22	CRANK BOSS	1	61	END CAP	1
23	CRANK HANDLE	3	62	SPRING (Ø0.7xØ12xØ15x5Tx21L)	8
25	COLUMN CAP PLATE	1	63	WATER COLLECTOR BODY	1
26	COLUMN	1	64	SEAL(760MM)	1
27	BASE	1	65	MEMBRANE	3
28	PIVOT BOLT	1	66	MOUNTING RING	1
29	FLAT WASHER (Ø12xØ23x2.0)	2	67	TRUSS HEAD MACHINE SCREW (M4x8xP0.7)	6
30	EYE BOLT	3	69	ANGLE BRACKET	1
31	WING NUT (M10xP1.5)	3	70	RING BRACKET	1
32	FLAT WASHER (Ø10xØ23x2)	3	72	LASER CONNECTOR SET(1 1/4"-7)	1
33	ACORN NUT (M10xP1.5)	3	73	LASER CONNECTOR SET(1/2"BSP)	1
34	THUMB SCREW (M6x16xP1.0)	4			

Exploded View (S170 Model)



NO.01~50 Version 2.1

Parts List (S170 Model)

NO.	Parts Name	Q'TY	NO.	Parts Name	Q'TY
1	TURNBUCKLE SHAFT M12	1	24	COLUMN 730MM	1
2	FLAT WASHER 1/2"xØ23x2	6	25	BASE	1
3	CRADLE CLAMP BRACKET Ø60	1	26	FLAT WASHER Ø10xØ23x2	1
4	EXTERNAL CIRCLIP S-15	2	27	SHOULDER BOLT	2
5	BUSHING Ø15xØ20x10	2	32	LOCK PLATE	1
6	CRANK SPINDLE	1	34	ANGLE LOCK CLAMP	1
7	CRANK GEAR M1.5x16T	1	35	WRENCH (M19)	1
8	ROLL PIN Ø5x25	2	36	SPRING WASHER M4	2
9	CARRIAGE	1	37	FLAT HEAD MACHINE SCREW M5x12	5
11	AXLE SHAFT	2	38	MOUNTING TENON 10x10x100	1
12	ECCENTRIC SHAFT	2	39	SOCKET CAP SCREW M8x30	4
13	AXLE SPACER B	4	40	HEX BOLT M10x90L	1
14	BALL BEARING 6001	8	41	CONNECTING SUPPORT	2
15	AXLE SPACER C	4	42	SPACER	1
16	GUIDE ROLLER	4	43	NYLOCK NUT M10	2
17	AXLE SPACER A	4	44	HEX BOLT M10	1
18	SOCKET CAP SCREW M6x16	4	45	BUTTRESS LOCK	1
19	TRUSS HEAD MACHINE SCREW M4x10	2	46	LEVELING SCREW	3
20	CARRIAGE LOCK LEVER	1	47	HEX NUT M12	3
21	CRANK HANDLE	1	49	ROLL PIN Ø4x25	3
22	SOCKET CAP SCREW M4x10	3	50	M12 THREAD INSERT	1
23	COLUMN CAP	1			