

AGP

Magnetic Core Drill

MD350 & 350N



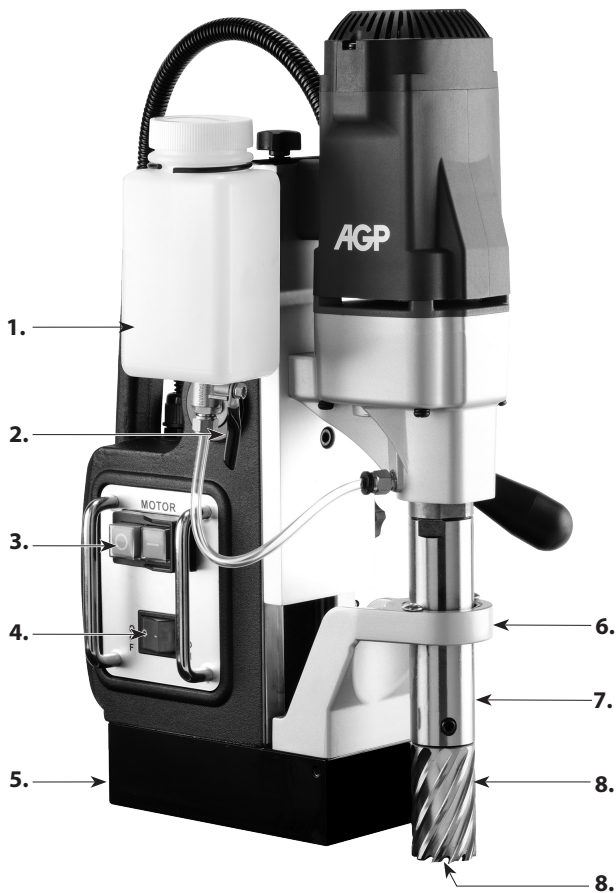
Instruction Manual

CE CB  _{C US}



TECHNICAL DATA

MODEL	MD350	MD350N
Power Input	1100 W	
Voltage	220-240 V~ 50-60 Hz, or 110-120 V~ 50-60 Hz (See Machine Nameplate)	
No/Full Load Min ⁻¹	620 / 350	550 / 330
Capacity	Ø x Depth of Cut (Annular Cutters)	35 x 50 mm (1-3/8" x 2")
	Ø Twist Drills	13 mm (1/2") Shank
	Stroke	110 mm (4.3")
Magnetic Adhesion	15,000 N	
Net Weight	12.6 kg (27.7 lb)	



1. Coolant Tank
2. Coolant Feed Tap
3. Motor Switch
4. Magnet Switch
5. Magnet Base

6. Arbor Support Bracket
7. Arbor
8. Annular Cutter (Not Included)
9. Pilot Pin (Not Included)



Optional adaptor
and 13mm chuck
(Not included)

STANDARD ACCESSORIES

- * Wrench M8
- * L-Hex Key M2.5
- * L-Hex Key M4
- * Chip Guard Kit
- * Coolant Tank Kit
- * Safety Strap

OPTIONAL ACCESSORIES

- * Chuck Adaptor
- * 13mm Chuck & Key

GENERAL POWER TOOL SAFETY WARNINGS



WARNING Read all safety warnings, instructions, illustrations and specifications provided with this power tool. Failure to follow all instructions listed below may result in electric shock, fire and/or serious injury.

Save all warnings and instructions for future reference.

The term "power tool" in the warnings refers to your mains-operated (corded) power tool or battery-operated (cordless) power tool.

1) WORK AREA SAFETY

- a. **Keep work area clean and well lit.** Cluttered or dark areas invite accidents.
- b. **Do not operate power tools in explosive atmospheres, such as in the presence of flammable liquids, gases or dust.** Power tools create sparks which may ignite the dust or fumes.
- c. **Keep children and bystanders away while operating a power tool.** Distractions can cause you to lose control.

2) ELECTRICAL SAFETY

- a. **Power tool plugs must match the outlet. Never modify the plug in any way. Do not use any adapter plugs with earthed (grounded) power tools.** Unmodified plugs and matching outlets will reduce risk of electric shock.
- b. **Avoid body contact with earthed or grounded surfaces, such as pipes, radiators, ranges and refrigerators.** There is an increased risk of electric shock if your body is earthed or grounded.
- c. **Do not expose power tools to rain or wet conditions.** Water entering a power tool will increase the risk of electric shock.
- d. **Do not abuse the cord. Never use the cord for carrying, pulling or unplugging the power tool. Keep cord away from heat, oil, sharp edges or moving parts.** Damaged or entangled cords increase the risk of electric shock.
- e. **When operating a power tool outdoors, use an extension cord suitable for outdoor use.** Use of a cord suitable for outdoor use reduces the risk of electric shock.
- f. **If operating a power tool in a damp location is unavoidable, use a residual current device (RCD) protected supply.** Use of an RCD reduces the risk of electric shock.

3) PERSONAL SAFETY

- a. **Stay alert, watch what you are doing and use common sense when operating a power tool. Do not use a power tool while you are tired or under the influence of drugs, alcohol or medication.** A moment of inattention while operating power tools may result in serious personal injury.
- b. **Use personal protective equipment. Always wear eye protection.** Protective equipment such as a dust mask, non-skid safety shoes, hard hat or hearing protection used for appropriate conditions will reduce personal injuries.
- c. **Prevent unintentional starting. Ensure the switch is in the off-position before connecting to power source and/or battery pack, picking up or carrying the tool.** Carrying power tools with your finger on the switch or energising power tools that have the switch on invites accidents.
- d. **Remove any adjusting key or wrench before turning the power tool on.** A wrench or a key left

attached to a rotating part of the power tool may result in personal injury.

- e. **Do not overreach. Keep proper footing and balance at all times.** This enables better control of the power tool in unexpected situations.
- f. **Dress properly. Do not wear loose clothing or jewellery. Keep your hair and clothing away from moving parts.** Loose clothes, jewellery or long hair can be caught in moving parts.
- g. **If devices are provided for the connection of dust extraction and collection facilities, ensure these are connected and properly used.** Use of dust collection can reduce dust-related hazards.
- h. **Do not let familiarity gained from frequent use of tools allow you to become complacent and ignore tool safety principles.** A careless action can cause severe injury within a fraction of a second.

4) POWER TOOL USE AND CARE

- a. **Do not force the power tool. Use the correct power tool for your application.** The correct power tool will do the job better and safer at the rate for which it was designed.
- b. **Do not use the power tool if the switch does not turn it on and off.** Any power tool that cannot be controlled with the switch is dangerous and must be repaired.
- c. **Disconnect the plug from the power source and/or remove the battery pack, if detachable, from the power tool before making any adjustments, changing accessories, or storing power tools.** Such preventive safety measures reduce the risk of starting the power tool accidentally.
- d. **Store idle power tools out of the reach of children and do not allow persons unfamiliar with the power tool or these instructions to operate the power tool.** Power tools are dangerous in the hands of untrained users.
- e. **Maintain power tools and accessories. Check for misalignment or binding of moving parts, breakage of parts and any other condition that may affect the power tool's operation. If damaged, have the power tool repaired before use.** Many accidents are caused by poorly maintained power tools.
- f. **Keep cutting tools sharp and clean.** Properly maintained cutting tools with sharp cutting edges are less likely to bind and are easier to control.
- g. **Use the power tool, accessories and tool bits etc. in accordance with these instructions, taking into account the working conditions and the work to be performed.** Use of the power tool for operations different from those intended could result in a hazardous situation.
- h. **Keep handles and grasping surfaces dry, clean and free from oil and grease.** Slippery handles and grasping surfaces do not allow for safe handling and control of the tool in unexpected situations.

5) SERVICE

Have your power tool serviced by a qualified repair person using only identical replacement parts. This will ensure that the safety of the power tool is maintained.

TERMINOLOGY USED IN THE MANUAL

- 1. **Warning:** This term means that there is a risk of physical harm or death to the operator or people nearby.
- 2. **Caution:** This term means that there is a risk of damage to the machine, cutting tool or other equipment.
- 3. **Note:** These terms offer useful information relating to the operation of the machine or its maintenance.

Symbols used in this manual

V.....volts

A.....amperes

Hz.....hertz

W.....watt

~.....alternating current

n_0no load speed

min^{-1}revolutions or reciprocation

per minute



.....warning of general danger



.....with electrical earth



.....read these instructions



.....always wear eye protection



.....always wear a dust mask.



.....always wear hearing protection



.....wear safety-approved hard hat



do not dispose of electric tools,
accessories and packaging together
with household waste material

DRILL SAFETY WARNINGS

- a. **The drill must be secured.** A drill that is not properly secured may move or tip over and may result in personal injury.
- b. **The workpiece must be clamped or secured to the workpiece support. Do not drill pieces that are too small to be clamped securely.** Holding the workpiece by hand during operation may result in personal injury.
- c. **Do not wear gloves.** Gloves may be entangled by the rotating parts or chips, leading to personal injury.
- d. **Keep your hands out of the drilling area while the tool is running.** Contact with rotating parts or chips may result in personal injury.
- e. **Make sure the accessory is rotating before feeding into the workpiece.** Otherwise the accessory may become jammed in the workpiece, causing unexpected movement of the workpiece and personal injury.
- f. **When the accessory is jammed, stop applying downward pressure and switch off the tool. Investigate and take corrective actions to eliminate the cause of the jam.** Jamming can cause unexpected movement of the workpiece and personal injury.
- g. **Avoid generating long chips by regularly interrupting downward pressure.** Sharp metal chips may cause entanglement and personal injuries.
- h. **Never remove chips from the drilling area while the tool is running. To remove chips, move the accessory away from the workpiece, switch off the tool, and wait for the accessory to stop moving. Use tools such as a brush or hook to remove chips.** Contact with rotating parts or chips may result in personal injury.
- i. **Accessories with speed ratings must be rated at least equal to the maximum speed marked on the power tool.** Accessories running faster than their rated speed can break and fly apart.

MAGNETIC DRILL SPECIFIC SAFETY WARNINGS AND CAUTIONS

- a. **Always use safety Strap.** Mounting can release.
- b. **WARNING: While operating, only hold the crank handles, not any other part of the machine.**

Placing the hand on the machine may result in an electric shock in the event of a voltage leak or if the machine cuts its own power supply cable.

- c. **Always ensure that the work piece is a minimum of 12mm (7/16 in.) thick. If it is not, then use a piece of steel plate at least 12mm thick and larger than the magnet, below the work piece, to supplement the magnetic adhesion.** The magnet's adhesion depends on the thickness of the work piece.
- d. **Do not operate the machine on a workpiece while it is being welded.** This may lead to damage to the machine and/or personal injury.
- e. **Never position machine on a work piece between the electrode and the ground of any arc type welder.** The welder's current will ground through the earth wire in the machine's power supply cable, causing it damage.
- f. **Do not exceed 90 degrees from horizontal.** It is hazardous to use the drill upside-down.
- g. **Always ensure that the magnet is clean and free of rust and scale.** Metal chips and other debris will hamper magnetic adhesion.
- h. **Always use the tool alone on the receptacle.** Other units used on the same receptacle could cause uneven voltage that could lead to the magnet releasing.
- i. **Ensure that the magnet has properly adhered to the work piece before beginning drilling.** Proper magnet adhesion is essential for safe drilling.
- j. **When drilling non-ferrous (non-magnetic) work materials, only use a manufacturer-approved fixture such as a vacuum base adapter.** Use of accessories which are not manufacturer-approved could result in a hazardous situation.
- k. **Do not operate with dull or damaged cutting tools.** This may overload the motor.
- l. **Avoid operating annular cutters without cutting fluid.** Always check fluid level before operating. Annular cutters require cutting fluid for proper operation and long life.
- m. **Protect the motor. Never allow cutting fluid, water, or other contaminants to enter the motor.** This could lead to electric shock or motor damage.
- n. **When drilling stacked work materials, always stop to clear the slug after the first layer is drilled.** The loose slug will interfere with proper drilling.
- o. **CAUTION: Never attempt to use machine with incorrect current or abnormally low voltage.** Incorrect voltage could lead to motor damage.
- p. **This machine is not intended for production-line type use.**

MAGNET BASE DUTY CYCLE

Do not leave the magnet base activated continuously for more than 60 minutes. If the magnet base is overheated, allow it to cool for 30 minutes before continuing.

CAUTION: Turn the magnet base off when not in use. Leaving the magnet base on continuously will damage it.

ASSEMBLY

Coolant tank assembly required. First attach clear tube to the bottom of the coolant tank. To do this, first loosen the nut and slide nut onto the tube. Then slide tube onto the nipple. Then tighten the nut. Slide tank hanger over the screw on the upper right hand side of slide and tighten. Finally insert the other end of the

tube into the quick-release connector in the gearbox. Just directly push in to install. **(To remove, first firmly push the red collar of the connector and pull the tube out.)** Cutting coolant fluid is always required when using annular cutters. Open tank cover and fill. Check coolant fluid level often. Keep coolant tap closed when not in use.

Chip guard must be used. To attach the chip guard, use the supplied butterfly bolts to bolt to the magnet. It is not necessary to remove guard to clean chips. Simply raise guard to its upper position.

Safety Strap must be used. Loop strap around the workpiece, feed strap through the power tool's handle, and tighten strap using the ratchet mechanism.

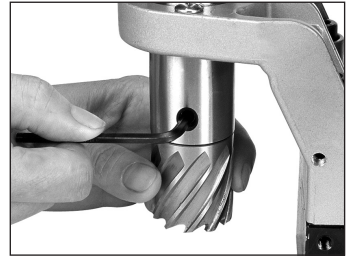
MOUNTING ANNULAR CUTTERS

CAUTION: Never use a cutting tool that is larger than the maximum rated capacity of the machine.

1. To insert an annular cutter, first insert the pilot pin into the cutter. Then slide the cutter into the arbor, align the proper flat with the locking screw(s) and tighten securely with the supplied hex wrench.

CAUTION: Ensure that the locking screw is on a flat of the cutter and not just against the rounded shank.

2. Ensure that the oil feed tap is on and coolant feeds properly by pushing the pilot pin. If it feeds too quickly or slowly, adjust the tap accordingly. Keep the tap closed when not in use.



OPERATION-GENERAL

WARNING: Always ensure that the magnet is adhered properly to the work piece before beginning drilling.

NOTE: If mounting to a curved surface beam, mount the machine parallel to the curve in the work piece.

WARNING: Avoid operating at more than 90 degrees from horizontal. When drilling at such an angle take precautions to prevent cutting coolant from entering the motor. Paste-type coolant should be used.

1. First fit tool into arbor and line up with intended center of cut. Then switch magnet on.
2. Press green motor on button to start motor. Use the crank handle to feed to work. Always use very light pressure when beginning the cut and just as the tool is breaking through. The crank handle offers tremendous leverage; so do not use too much force. Allow the cutting tool to determine the pace. With experience, the operator will be able to determine the best pace to feed to the work. There should be some degree of audible slowing of the motor but



not bogging in the cut. Correct cutting speed with a properly sharp annular cutter will produce long unbroken chips, which produce a “bird’s nest” shaped bundle of chips around the cut.

NOTE: Always ensure that the cutting tool is sharp. A dull cutter typically will have finer and/or choppy shavings.

WARNING: ALWAYS clear chips when there is too much build-up. Excessive chip build-up could result in a jammed cutter or other hazardous situation.

WARNING: the slug ejects at end of cut and is very hot. Always provide a method of catching the slug, where the ejected slug may cause injury to people below.

Note: Lock the slide lock on the side of the machine in the fully raised position when at rest to prevent the slide from accidentally slamming down - remember to unlock it again before commencing drilling.

CAUTION: Never attempt to cut half-circles or to stitch drill (drill overlapping holes) with a TCT cutter. This may destroy the cutter.

CAUTION: Never attempt to re enter a half-finished cut if the magnet has been turned off and the machine shifted in the interim. This may destroy the cutter.

TWIST DRILLING

If twist drilling is desired, the arbor support bracket must be removed by removing the three socket-head bolts. Then an optional chuck adaptor arbor and chuck must be fitted. Follow the special instructions below to replace the arbor support bracket.

Arbor support bracket replacement

1. Replace arbor support bracket and screw in the 3 hex head bolts finger tight only (ensure that the needle bearing is clean and adequately greased.)
2. Replace the annular cutter arbor.

WARNING: use extreme care to avoid contacting the rotating arbor shaft!

3. Double check to ensure that there is no binding anywhere throughout the stroke.
4. Tighten the 3 bolts.



MAINTENANCE

Every 50 hours of operation blow compressed air through the motor while running at no load to clean out accumulated dust. (If operating in especially dusty conditions, perform this operation more often.)

1. Keep the machine clean and free of chips.
2. Check for loose fittings and tighten as needed.
3. Ensure that the ventilation slots are clear so that motor can be cooled normally. Blow low-pressure compressed air through the ventilation slots with the motor running to keep motor clean.

THE ARBOR SHAFT

Keep the arbor shaft free of dirt and lightly grease as needed. If the arbor support bearing is noisy, it may be dirty or have a chip lodged in it. Remove the arbor shaft to clean and re-grease the arbor support bearing.

THE GIBS (DOVETAIL SLIDES)

The gibes require adjustment if too loose. To adjust, loosen the lock nuts and adjust the adjuster screws evenly while moving the handle up and down. Adjust so that there is no free play, yet any binding anywhere in its range of travel. Then retighten the lock nuts. Periodically check, lubricate, and adjust as needed.



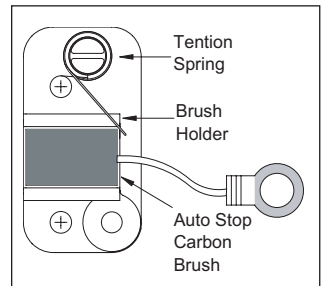
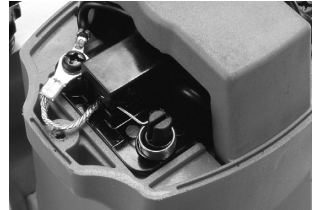
THE CARBON BRUSHES

The carbon brushes are a normal wearing part and must be replaced when they reach their wear limit.

Caution: Always replace the brushes as a pair.

To replace:

1. Remove the 4 screws and remove the motor tail cover.
2. Using pliers rotate the brush spring out of the way and slide the old carbon brush out of the brush holder.
3. Unscrew the screw to remove the brush lead. The old carbon brush may now be lifted away.
4. Install a new brush. Installation is the reverse of removal.
5. Replace the motor tail cover.



AUTO STOP CARBON BRUSH

Due to the new auto stop carbon brush if the machine comes to a stop without any reason, the brushes have to be checked. The auto feature stops the machine before the carbon brushes are finished and protects the motor.

MAGNET TROUBLESHOOTING

Full magnet performance is absolutely essential for magnetic drill operation.

If the magnet works, but does not hold well, it is likely that one of the coils has failed. If the magnet does not

work at all, it is likely to be a failed rectifier. (It is highly unlikely that both magnet coils would fail at the same time)

NOTE: A faulty magnet coil can also damage the rectifier, so whenever there is a magnet problem, BOTH the magnet coils and rectifier must be checked.

WARNING: Never attempt to operate a magnetic drill with a faulty magnet!

CHECKING THE MAGNET (qualified technicians only)

If the magnet is not working well, it must be checked. Separate the wires of each individual coil and test the resistance of each coil separately. (note that 110V models are wired in parallel and 230V models are wired in series) The resistance of the coils of different sizes of magnets varies, but it should be in the region of hundreds of ohms. Most importantly, both coils must have very nearly the same resistance. If one of the coils has zero resistance, it means that it is shorted. If one of the coils has infinite resistance, it means that the circuit is broken. If either coil has a problem, the magnet must be replaced. A faulty magnet may also cause damage to the rectifier. Also check the rectifier when replacing a faulty magnet. (see below)

CHECKING THE RECTIFIER (Qualified technicians only)

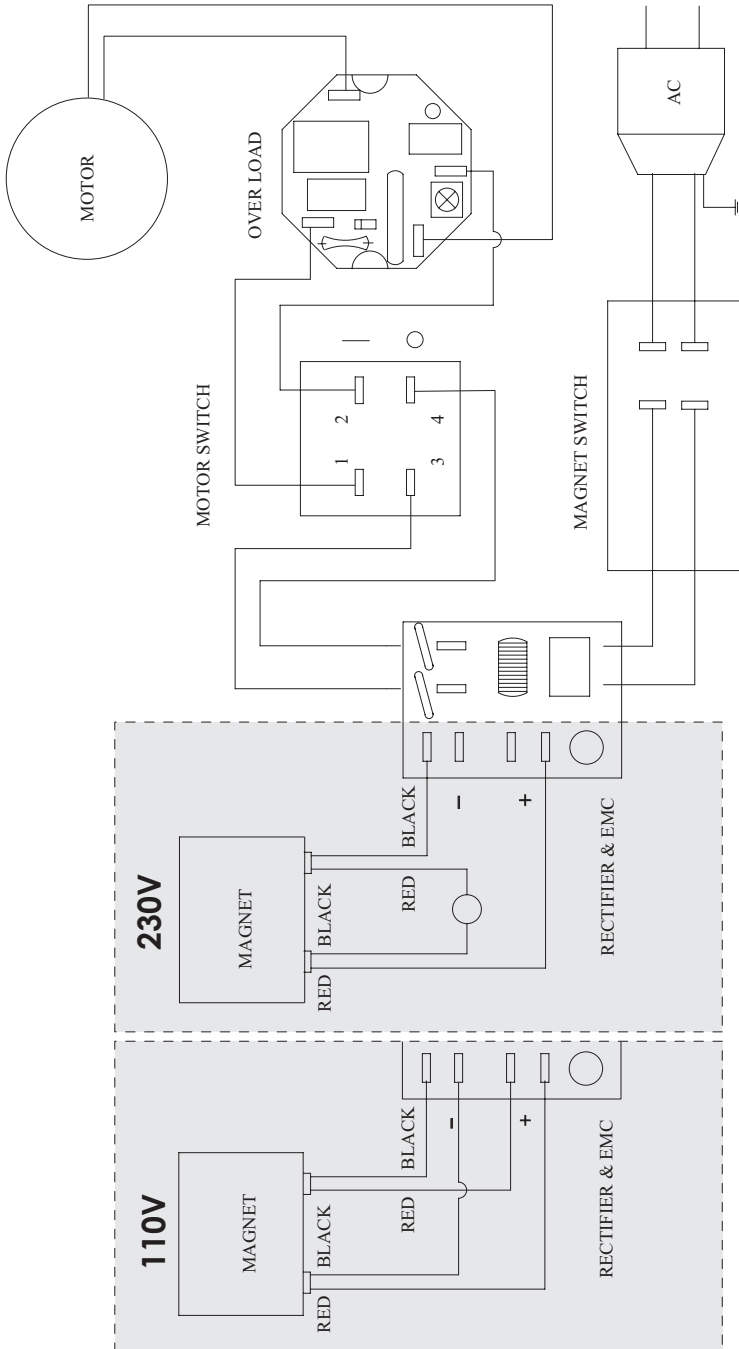
The rectifier takes the AC household current and converts it to DC to power the magnet. If it fails, the magnet coils will not receive power.

Disconnect the rectifier and test the resistance of both circuits of the rectifier between the AC and the DC sides. Note that polarity matters, so you can only take a reading if test probes are oriented correctly. Each side will be the opposite of the other. Both circuits should have very nearly the same resistance reading. If one of the circuits has zero resistance, it means that it is shorted. If one of the circuits has infinite resistance, it means that the circuit is broken.

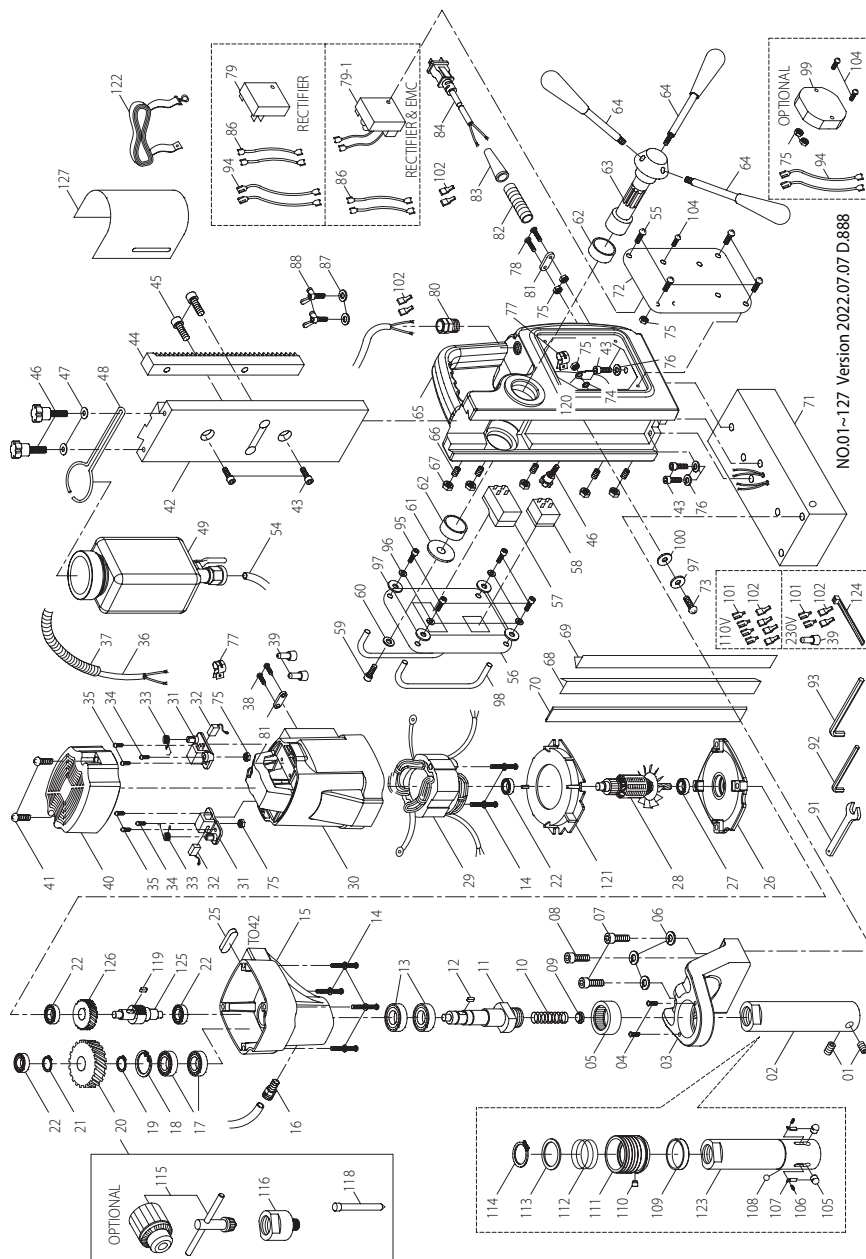
If the replacement of the power supply cord is necessary, this has to be done by the manufacturer or their agent in order to avoid a safety hazard.

WARNING: All repairs must be entrusted to an authorized service center. Incorrectly performed repairs could lead to injury or death.

WIRING

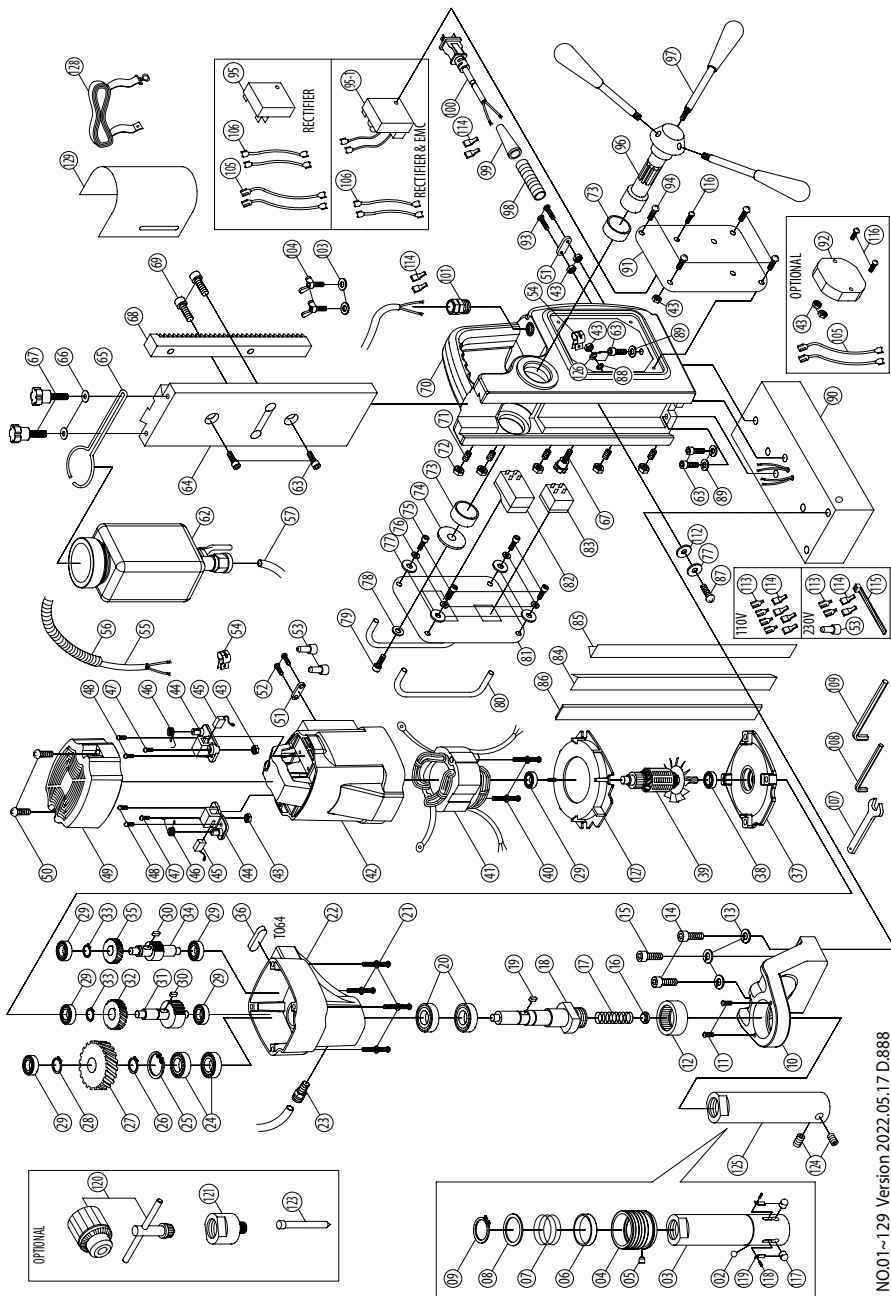


MD350 Exploded View & Parts list



NO.	Parts Name	QTY	66	SOCKET SET SCREW (M5x20xP0.8)	5
1	SOCKET SET SCREW (M8x7xP1.25)	2	67	HEX NUT (M5xP0.8)	5
2	ARBOR (M27-122.5L)	1	68	GIB STRIP-LEFT (258MM)	1
3	ARBOR SUPPORT BRACKET	1	69	GIB STRIP-RIGHT (258MM)	1
4	TRUSS HEAD MACHINE SCREW (M5x8xP0.8)	2	70	GIB TENSIONER (258x11x1.2T)	1
5	NEEDLE BEARING (HK 3516)	1	71	ELECTROMAGNET (164x80x48)	1
6	SPRING WASHER (M8)	3	72	SIDE PANEL (110x90x1.5T)	1
7	SOCKET CAP SCREW (M8x55xP1.25)	2	73	PANHEAD MACHINE SCREW (M4x16xP0.7)	1
8	SOCKET CAP SCREW (M8x30xP1.25)	1	74	EXTERNAL STAR WASHER (M5)	1
9	WATER SEAL (Ø16x16)	1	75	HEX NUT (M4xP0.7)	8
10	SPRING (Ø1.5xØ13.3xØ16.3x16Tx140L)	1	76	SPRING WASHER (M6)	3
11	SPINDLE (M27-112.5MM)	1	77	CABLE CLAMP	2
12	PARALLEL KEY (5x5x10)	1	78	PANHEAD MACHINE SCREW (M4x30xP0.7)	2
13	OIL SEAL (Ø28xØ40x7)	2	79	RECTIFIER (110&220V)	1
14	PANHEAD TAPPING SCREW (M5x60)	6	79-1	RECTIFIER & EMC (110V)/(110V&220V)	1
15	GEAR HOUSING	1	80	CABLE GLAND (5/16")	1
16	PUSH LOCK FITTING (PT1/8"xØ6)	1	81	CABLE CLIP	2
17	BALL BEARING (6003)	2	82	CABLE PROTECTOR (5/16"x7CM)	1
18	INTERNAL CIRCLIP (R-35)	1	83	CORD ARMOR	1
19	EXTERNAL CIRCLIP (S-17)	1	84	POWER SUPPLY CABLE	1
20	LAY GEAR (M1.0x52T)	1	86	WIRE LEAD (1015-16#18CM)	2
21	EXTERNAL CIRCLIP (S-15)	1	87	FLAT WASHER (Ø6xØ13x1)	2
22	BALL BEARING (608)	4	88	BUTTERFLY SCREW (M6x10xP1.0)	2
25	PARALLEL KEY (4x4x30)	1	91	WRENCH (M8)	1
26	GEAR PLATE	1	92	HEX KEY (M2.5)	1
27	BALL BEARING (609)	1	93	HEX KEY (M4)	1
28	ARMATURE (110V/220V-73x42x45)	1	94	WIRE LEAD (1015-16#18CM)	4
29	STATOR (110V/220V-73x42x45)	1	95	SOCKET CAP SCREW (M4x16xP0.7)	4
30	MOTOR HOUSING	1	96	SPRING WASHER (M4)	4
31	CARBON BRUSH HOLDER (7x11)	2	97	FLAT WASHER (Ø4xØ10x1)	5
32	CARBON BRUSH (7x11x17)	2	98	SWITCH GUARD BAR (90MM)	2
33	BRUSH SPRING (Ø.35x3x3T)	2	99	OVER LOAD PROTECTION (110V/220V)	1
34	PANHEAD MACHINE SCREW (M4x10xP0.7)	2	100	RUBBER WASHER (Ø4xØ11x1)	1
35	PANHEAD TAPPING SCREW (M4x12)	4	101	FEMALE SPADE TERMINAL	4
36	WIRE (1.25x2Cx65CM-VCTF)	1	102	SPADE TERMINAL BOOT	8
37	CABLE PROTECTOR (5/16"x40CM)	1	104	PANHEAD MACHINE SCREW (M4x25xP0.7)	3
38	PANHEAD TAPPING SCREW (M4x14)	2	105	LOCK PIN (12.3MM)/(11.7MM)	2
39	CRIMP CAP CONNECTOR (C4)	3	106	PANHEAD MACHINE SCREW (M3x4xP0.5)	2
40	MOTOR TAIL CASTING	1	107	LOCK PIN SPRING	2
41	PANHEAD TAPPING SCREW (M4x25)	2	108	CHECK BALL (Ø8)	1
42	SLIDE PLATE (L230MM)	1	109	RING (Ø40xØ44x9)	1
43	SOCKET CAP SCREW (M6x20xP1.0)	5	110	COLLAR PIN (Ø8)	1
44	GEAR RACK (M1.5x150L)	1	111	QUICK-RELEASE COLLAR	1
45	SOCKET CAP SCREW-PARTIAL THREAD (M8-1.25 x 16)	2	112	SPRING (Ø2.3xØ39xØ43.6x3Tx30L)	1
46	THUMB SCREW (M5x16)	3	113	SPRING SEAT RING (Ø35.1xØ44.5x2)	1
47	FLAT WASHER (Ø5xØ12x1)	2	114	EXTERNAL CIRCLIP (S-35)	1
48	COOLANT TANK BRACKET	1	115	CHUCK (1/2")	1
49	COOLANT TANK ASSEMBLY	1	116	CHUCK ADAPTOR (M27 / 1/2")	1
54	TUBE (Ø4xØ6x20CM)	1	118	PILOT PIN (HSSx77L/103LxØ6.34)	1
55	PANHEAD MACHINE SCREW (M4x8xP0.7)	4	118	PILOT PIN (TCTx90LxØ7.98/Ø6.34)	1
56	SWITCH PANEL (90x110x1.5T)	1	118	PILOT PIN (TCTx106LxØ6.34)/(TCTx108LxØ7.98)	1
57	MOTOR SWITCH (110V/220V)	1	119	PARALLEL KEY (4x4x8)	1
58	MAGNET SWITCH (110V&220V)	1	120	EARTHING MARKING	1
59	SOCKET CAP SCREW (M6x16xP1.0)	1	121	FAN SHROUD	1
60	FLAT WASHER (Ø6xØ25x1)	1	122	SAFETY BELT	1
61	FLAT WASHER (Ø6xØ40x2.5)	1	123	QUICK RELEASE ARBOR SHAFT (M27-122.5L)	1
62	BUSHING (Ø28xØ32x12)	2	124	ZIP TIE (2.5x100MM)	1
63	CRANK SPINDLE (Ø28)	1	125	INPUT SHAFT (M1.0x8T)	1
64	CRANK HANDLE	3	126	INPUT GEAR (MO.7x50T)	1
65	STAND BODY	1	127	CHIP GUARD	1

MD350N Exploded View & Parts list



NO.01-129 Version 2022.05.17 D.888

NO.	Parts Name	QTY	67	THUMB SCREW (M5x16)	3
2	CHECK BALL (Ø8)	1	68	GEAR RACK (M1.5x150L)	1
3	QUICK RELEASE ARBOR SHAFT (M27-122.5L)	1	69	SOCKET CAP SCREW-PARTIAL THREAD (M8-1.25 x 16)	2
4	QUICK-RELEASE COLLAR	1	70	STAND BODY	1
5	COLLAR PIN (Ø8)	1	71	SOCKET SET SCREW (M5x20xP0.8)	5
6	RING (Ø40xØ44x9)	1	72	HEX NUT (M5xP0.8)	5
7	SPRING (Ø2.3xØ39xØ43.6x3Tx30L)	1	73	BUSHING (Ø28xØ32x12)	2
8	SPRING SEAT RING (Ø35.1xØ44.5x2)	1	74	FLAT WASHER (Ø6xØ40x2.5)	1
9	EXTERNAL CIRCLIP (S-35)	1	75	SOCKET CAP SCREW (M4x16xP0.7)	4
10	ARBOR SUPPORT BRACKET	1	76	SPRING WASHER (M4)	4
11	TRUSS HEAD MACHINE SCREW (M5x8xP0.8)	2	77	FLAT WASHER (Ø4xØ10x1)	5
12	NEEDLE BEARING (HK 3516)	1	78	FLAT WASHER (Ø6xØ25x1)	1
13	SPRING WASHER (M8)	3	79	SOCKET CAP SCREW (M6x16xP1.0)	1
14	SOCKET CAP SCREW (M8x55xP1.25)	2	80	SWITCH GUARD BAR (90MM)	2
15	SOCKET CAP SCREW (M8x30xP1.25)	1	81	SWITCH PANEL (90x110x1.5T)	1
16	WATER SEAL (Ø16x16)	1	82	MOTOR SWITCH (110V/220V)	1
17	SPRING (Ø1.5xØ13.3xØ16.3x16Tx140L)	1	83	MAGNET SWITCH (110V&220V)	1
18	SPINDLE (M27-121MM)	1	84	GIB STRIP-LEFT (258MM)	1
19	PARALLEL KEY (5x5x10)	1	85	GIB STRIP-RIGHT (258MM)	1
20	OIL SEAL (Ø28xØ40x7)	2	86	GIB TENSIONER (258x11x1.2T)	1
21	PANHEAD TAPPING SCREW (M5x70)	4	87	PANHEAD MACHINE SCREW (M4x16xP0.7)	1
22	GEAR HOUSING	1	88	EXTERNAL STAR WASHER (M5)	1
23	PUSH LOCK FITTING (PT1/8"xØ6)	1	89	SPRING WASHER (M6)	3
24	BALL BEARING (6003)	2	90	ELECTROMAGNET (164x80x48)	1
25	INTERNAL CIRCLIP (R-35)	1	91	SIDE PANEL (110x90x1.5T)	1
26	EXTERNAL CIRCLIP (S-17)	1	92	OVER LOAD PROTECTION (110V/220V)	1
27	OUTPUT GEAR (M1.25x37T)	1	93	PANHEAD MACHINE SCREW (M4x30xP0.7)	2
28	EXTERNAL CIRCLIP (S-15)	1	94	PANHEAD MACHINE SCREW (M4x8xP0.7)	4
29	BALL BEARING (608)	6	95	RECTIFIER (110&220V)	1
30	PARALLEL KEY (4x4x8)	2	95-1	RECTIFIER & EMC (110V)/(110V&220V)	1
31	COUNTERSHAFT (M1.25x12T)	1	96	CRANK SPINDLE (Ø28)	1
32	LAY GEAR (M1.0x34T)	1	97	CRANK HANDLE	3
33	EXTERNAL CIRCLIP (S10)	2	98	CABLE PROTECTOR (5/16"x7CM)	1
34	INPUT SHAFT (M1.0 x 9T)	1	99	CORD ARMOR	1
35	INPUT GEAR (M1.0x30T)	1	100	POWER SUPPLY CABLE	1
36	PARALLEL KEY (4x4x30)	1	101	CABLE GLAND (5/16")	1
37	GEAR PLATE	1	103	FLAT WASHER (Ø6xØ13x1)	2
38	BALL BEARING (6001)	1	104	BUTTERFLY SCREW (M6x10xP1.0)	2
39	ARMATURE (110V/220V-73x42x45)	1	105	WIRE LEAD (1015-16#18CM)	4
40	PANHEAD TAPPING SCREW (M5x60)	2	106	WIRE LEAD (1015-16#18CM)	2
41	STATOR (110V/220V-73x42x45)	1	107	WRENCH (M8)	1
42	MOTOR HOUSING	1	108	HEX KEY (M2.5)	1
43	HEX NUT (M4xP0.7)	8	109	HEX KEY (M4)	1
44	CARBON BRUSH HOLDER (7x11)	2	112	RUBBER WASHER (Ø4xØ11x1)	1
45	CARBON BRUSH (7x11x17)	2	113	FEMALE SPADE TERMINAL	4
46	BRUSH SPRING (0.35x3x3T)	2	114	SPADE TERMINAL BOOT	8
47	PANHEAD MACHINE SCREW (M4x10xP0.7)	2	115	ZIP TIE (2.4x80MM)	1
48	PANHEAD TAPPING SCREW (M4x12)	4	116	PANHEAD MACHINE SCREW (M4x25xP0.7)	3
49	MOTOR TAIL CASTING	1	117	LOCK PIN (12.3MM)/(11.7MM)	2
50	PANHEAD TAPPING SCREW (M4x25)	2	118	PANHEAD MACHINE SCREW (M3x4xP0.5)	2
51	CABLE CLIP	2	119	LOCK PIN SPRING	2
52	PANHEAD TAPPING SCREW (M4x14)	2	120	CHUCK (1/2")	1
53	CRIMP CAP CONNECTOR (C4)	3	121	CHUCK ADAPTOR (M27 / 1/2")	1
54	CABLE CLAMP	2	123	PILOT PIN (HSSx77L/103LxØ6.34)	1
55	WIRE (1.25x2Cx65CM-VCTF)	1	123	PILOT PIN (TCTx90LxØ7.98/Ø6.34)	1
56	CABLE PROTECTOR (5/16"x40CM)	1	123	PILOT PIN (TCTx106LxØ6.34)/PILOT PIN (TCTx108LxØ7.98)	1
57	TUBE (Ø4xØ6x20CM)	1	124	SOCKET SET SCREW (M8x7xP1.25)	2
62	COOLANT TANK ASSEMBLY	1	125	ARBOR (M27-122.5L)	1
63	SOCKET CAP SCREW (M6x20xP1.0)	5	126	EARTHING MARKING	1
64	SLIDE PLATE (L238MM)	1	127	FAN SHROUD	1
65	COOLANT TANK BRACKET	1	128	SAFETY BELT	1
66	FLAT WASHER (Ø5xØ12x1)	2	129	CHIP GUARD	1

