

**AGP®**



# DD62

## Diamond Core Drilling Motor

For Dry Drilling of Reinforced Concrete

Jan. 2025

Internal & Confidential

**AGP®** | DD62 Dry Drilling Motor

### AGP TAIWAN

Lee Yeong Industrial Co., Ltd.

No.2, Kejia Rd., Douliu City, 64057, Taiwan

Tel : 886-5-5518689 Fax : 886-5-5518635

### AGP EUROPE BV

Evenbroekveld 16D, 9420 Erpe-Mere, Belgium

Tel : +32 53 21 62 22 Fax : +32 53 83 88 20



# Introduction, Target groups & Applications

## DD62 Introduction

- **Dry Drilling of Reinforced Concrete up to 162 mm**

While dry drilling of brick is very common, dry drilling of RC is a relatively new technology made possible by special core bits now available. This machine is purpose-built to take full advantage of these new bits. It can also be used in soft materials such as brick up to 250 mm.

- **Soft Percussion**

The special heavy-duty percussion mechanism is optimized for dry drilling of reinforced concrete.

- **2200 W Motor**

The high-efficiency motor features thermal and overload protection, as well as a useful LED load warning system.

- **2-Speed Gearbox**

The robust oil-bath gearbox with mechanical clutch ensures long service life and a wide range of drilling diameters.

- **All-Metal Construction**

The aluminum motor housing ensures effective cooling and durability under intensive use conditions.

- **D-Handle**

The D-handle makes the tool easier to use when mounted on a drill stand in confined spaces and in corners.

## Target Groups and Applications

- **Hollow-Core Slabs**

This tool is the ultimate solution for drilling prestressed hollow-core slabs, where wet drilling would cause problems, and where traditional dry drilling motors, which are made for drilling brick, are not effective.

- **Avoiding the Problems of Wet Drilling**

This tool is an excellent choice for drilling in any situations where water cannot be used, such as in occupied buildings or in constructions where there is a combination of wood and stone. Dry drilling allows faster setup and less cleanup, saving valuable time.

- **Overhead Drilling**

Overhead drilling with this machine is much lighter, less messy, more convenient, and just as precise when compared to wet drilling.

- **Target Groups**

This tool is a useful addition to the equipment of specialist drilling companies, general construction companies, HVAC installers, industrial electricians or anyone who needs an intensive-use dry drill motor for both reinforced concrete and brick.



# Sales Arguments



## Switchable Soft Percussion

Keeps diamond segments sharp and assists the general efficiency of the dry drilling process.



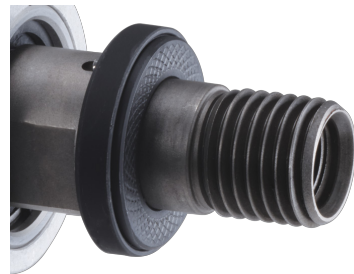
## Heavy-Duty Gearbox

Oil bath, 2-speed gearbox with mechanical clutch for heavy-duty use.



## LED Load Indicator

LED load indicator to give the operator reliable guidance on load conditions.



## Anti-Seize Ring

Standard equipment anti-seize ring prevents the bit from becoming stuck on the spindle.



## Special Dustproof Switch

Hall Effect Switch is completely dustproof, and is even waterproof. Includes anti-restart function.



## Spirit Levels

Vertical and horizontal Spirit Levels allow operators to create precisely aligned holes

# Technical Specification

## Technical Specification

Model	DD62
Power Input	230 - 240 V: 2200 W
	220 V : 2000 W
	110 - 120 V: 1700 W
Voltage, Frequency	110-120 V~ 50-60 Hz or
	230-240 V~ 50-60 Hz
No Load Speeds	1250 / 1900 min <sup>-1</sup>
Rated Load Speeds	750 / 1140 min <sup>-1</sup>
Percussion Frequency, No Load	25,000 / 38,000 b/min
Percussion Frequency, Rated Load	16,250 / 24,700 b/min
Capacity-Dry (Reinforced Concrete)	162 mm (6-1/2")
Capacity-Dry (Brick)	250 mm (10")
Gear Oil Type	80W-90
Gear Oil Capacity	200 ml
Arbor Thread	1 1/4" UNC & 1/2" BSP
Neck Diameter	60 mm
Dimensions (LxWxH)	530 x 130 x 215 mm
Weight	6.5 kg (14.3 lb)



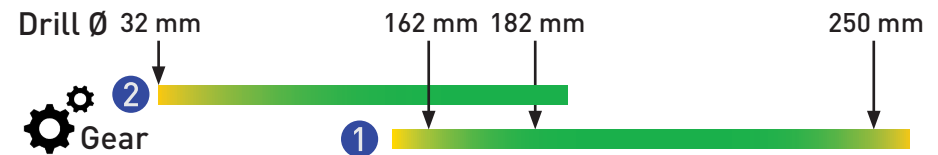
Gear 1 must always use a drill stand.



**Dry Drilling in Reinforced Concrete**  
Ideal Operating Window



**Dry Drilling in Brick**  
Ideal Operating Window



- ① Side Handle Assy.
- ② Tubular Spirit Level
- ③ LED Load Indicator
- ④ Hall Effect Switch
- ⑤ Main Handle
- ⑥ Percussion Selector
- ⑦ Gear Selector
- ⑧ Anti-Seize Ring
- ⑨ Spindle 1-1/4"UNC & 1/2"BSP
- ⑩ Lock Button

# Offer Content

## Standard Accessories

- ① DD62 Dry Drilling Motor
- ② Soft Grip Side Handle
- ③ M32 Wrench
- ④ Blow Molded Case



## Optional Accessories

- ⑤ Centering Pilot










# Comparison Table

Brand								
Special Dry Drilling of Reinforced Concrete with Percussion								
Model No.	DD62	DKS 15P	DKS 15L (aluminum version)	BDB 829	BDB 825	DP 2200 MA-16	ESD 162	FBS16
Power	230-240 V: 2200 W 	230 V: 2000 W	230 V: 2000 W	230 V: 2150 W	230 V: 1800 W	230 V: 2200 W	230 V: 2200 W	230 V: 2200 W
RPM (rated load)	Gear 1: 750 /min Gear 2: 1140 /min	Gear 1: 700 /min Gear 2: 1700 /min	Gear 1: 540 /min Gear 2: 1200 /min	Gear 1: 725 /min Gear 2: 1500 /min	748 /min	880 /min	0-1100 /min	1100 /min
Percussion Frequency (rated load)	Gear 1: 16 250 bpm Gear 2: 24 700 bpm	Gear 1: 14 000 bpm Gear 2: 34 000 bpm	Gear 1: 10 800 bpm Gear 2: 24 000 bpm	Gear 1: 14 500 bpm Gear 2: 30 000 bpm	18 000 bpm	21 000 bpm	22 000 bpm	22 000 bpm
Insulation Class	Class 2	Class 1	Class 1	Class 2	Class 2	Class 2	Class 1	Class 1
Capacity-Dry, Reinforced Concrete	162 mm 	150 mm	180 mm	200 mm	160 mm	152 mm	162 mm (202 mm max.)	162 mm
Capacity-Dry, Brick	250 mm 	180 mm	200 mm	250 mm	200 mm	202 mm	202 mm	202 mm
Spindle	1-1/4" UNC & 1/2" BSP	1-1/4" UNC & 1/2" BSP	1-1/4" UNC & 1/2" BSP	1-1/4" UNC & 1/2" BSP	1-1/4" UNC & 1/2" BSP	1-1/4" UNC	1-1/4" UNC & 1/2" BSP	1-1/4" UNC & 1/2" BSP
Led indicator	Yes 	No	No	Yes (on left side of handle)	Yes (on left side of handle)	No	Yes (on left side of handle)	Yes (on left side of handle)
Anti-Seize Ring	Yes 	No	No	No	No	Optional	Optional	No
Integrated Dust Collection	Yes 	No (external)	No (external)	No (external)	No (external)	Yes	No (external)	No (external)
Switch Type	Hall-Effect Dustproof/ Waterproof 	Standard Type	Standard Type	Standard Type	Standard Type	Standard Type	Standard Type, Variable	Standard Type
Locking Gear Lever	Yes 	No	No	No	No	No	No	No

# Comparison Table

Brand								
Special Dry Drilling of Reinforced Concrete with Percussion								
<b>Model No.</b>	DD62	DKS 15P	DKS 15L (aluminum version)	BDB 829	BDB 825	DP 2200 MA-16	ESD 162	FBS16
<b>Levels</b>	Yes	Yes	Yes	Yes	Yes	No	Yes	Yes
<b>Soft-Grip Rubber Handle</b>	Yes 	Yes	Yes	No (hard plastic)	No (hard plastic)	No	No (hard plastic)	No (hard plastic)
<b>In-line Side Handle</b>	Yes 	Yes	Yes	No (fixed)	No (fixed)	No (offset)	No (offset)	No (offset)
<b>Centering Aid</b>	Optional	Optional	Optional	Optional	Optional	Optional	Optional	Optional
<b>Weight</b>	6.5 kg (with anti-seize ring)	5.8 kg	6.4 kg	6.6 kg	5.2 kg	7.1 kg	6.6 kg	6.7 kg
<b>Gearcase / Motor Housing Material</b>	Aluminum/Aluminum	Aluminum / Plastic	Aluminum / Aluminum	Aluminum / Plastic	Aluminum / Plastic	Aluminum / Aluminum	Aluminum / Plastic	Aluminum / Plastic
<b>Gearbox Lubrication</b>	Oil Bath 	Oil Bath	Oil Bath	Grease	Grease	Grease	Grease	Grease
<b>Street Price (Germany, w/o tax) Internet sourced info</b>		€ 975,00	€ 1056,00	€ 949,54	€ 725,21	€ 990,00	€ 771,76	€ 961,00
<b>Remarks</b>		No LED load indicator.	No LED load indicator.	Fixed handle.	Fixed handle.	Single gear limits size versatility (only good for larger Øs)	Single gear limits size versatility (performance suffers with both larger & smaller Øs)	Single gear limits size versatility (performance suffers with both larger & smaller Øs)
<b>Conclusion</b>	The <b>AGP</b> offers the best combination of features and performance to work in the widest range of sizes and includes useful touches, such as the LED load indicator, standard anti-seize ring, soft-grip handle and dustproof/waterproof switch. This gives the maximum value to the end user.							

# Comparison Table

Brand

**AGP**<sup>®</sup>

**BAIER**  
Elektro-  
werkzeuge

**BAIER**  
Elektro-  
werkzeuge

Special Dry Drilling of Reinforced Concrete with Percussion



Model No.	DD62	BDB 829	BDB 825
Power	<b>230 - 240 V: 2200 W</b> 👍	230 V: 2150 W	230 V: 1800 W
RPM (rated load)	Gear 1: 750 /min Gear 2: 1140 /min	Gear 1: 725 /min Gear 2: 1500 /min	<b>748 /min (only one gear)</b>
Percussion Frequency (rated load)	Gear 1: 16 250 bpm Gear 2: 24 700 bpm	Gear 1: 14 500 bpm Gear 2: 30 000 bpm	18 000 bpm
Insulation Class	Class 2	Class 2	Class 2
Capacity-Dry, Reinforced Concrete	162 mm	200 mm	160 mm
Capacity-Dry, Brick	<b>250 mm</b> 👍	250 mm	200 mm
Spindle	1-1/4" UNC & 1/2" BSP	1-1/4" UNC & 1/2" BSP	1-1/4" UNC & 1/2" BSP
Led Indicator	Yes (in most visible position)	Yes (on left side of handle)	Yes (on left side of handle)
Anti-Seize Ring	<b>Yes</b> 👍	No	No
Integrated Dust Collection	<b>Yes</b> 👍	No (external)	No (external)
Switch Type	Hall-Effect Dustproof/Waterproof	Standard Type	Standard Type
Locking Gear Lever	<b>Yes</b> 👍	No	No
Levels	Yes	Yes	Yes
Soft-Grip Rubber Handle	<b>Yes</b> 👍	No (hard plastic)	No (hard plastic)
In-line Side Handle	<b>Yes</b> 👍	<b>No (fixed) (not adjustable)</b>	<b>No (fixed) (not adjustable)</b>
Centering Aid	Optional	Optional	Optional
Weight	<b>6.5 kg (with anti-seize ring)</b> 👍	6.6 kg	5.2 kg
Gearcase / Motor Housing Material	Aluminum / Aluminum	Aluminum / Plastic	Aluminum / Plastic
Gearbox Lubrication	<b>Oil Bath</b> 👍	<b>Grease</b>	<b>Grease</b>
Street Price (Germany, w/o tax) Internet sourced info		€ 949,54	€ 725,21
Remarks		Fixed handle.	Fixed handle.

Conclusion

The **AGP** offers the best combination of features and performance to work in the widest range of sizes and includes useful touches, such as the LED load indicator, standard anti-seize ring, soft-grip handle and dustproof/waterproof switch. This gives the maximum value to the end user.

**AGP** | DD62 Dry Drilling Motor



# Comparison Table

Brand

**AGP**<sup>®</sup>

**WEKA**  
ELEKTROWERKZEUGE

**WEKA**  
ELEKTROWERKZEUGE

Special Dry Drilling of Reinforced Concrete with Percussion



Model No.	DD62	DKS 15P	DKS 15L (aluminum version)
Power	<b>230 - 240 V: 2200 W</b> 👍	230 V: 2000 W	230 V: 2000 W
RPM (rated load)	Gear 1: 750 /min Gear 2: 1140 /min	Gear 1: 700 /min Gear 2: 1700 /min	Gear 1: 540 /min Gear 2: 1200 /min
Percussion Frequency (rated load)	Gear 1: 16 250 bpm Gear 2: 24 700 bpm	Gear 1: 14 000 bpm Gear 2: 34 000 bpm	Gear 1: 10 800 bpm Gear 2: 24 000 bpm
Insulation Class	Class 2	Class 1	Class 1
Capacity-Dry, Reinforced Concrete	162 mm	150 mm	180 mm
Capacity-Dry, Brick	<b>250 mm</b> 👍	180 mm	200 mm
Spindle	1-1/4" UNC & 1/2" BSP	1-1/4" UNC & 1/2" BSP	1-1/4" UNC & 1/2" BSP
Led Indicator	<b>Yes (in most visible position)</b> 👍	<b>No</b>	<b>No</b>
Anti-Seize Ring	<b>Yes</b> 👍	No	No
Integrated Dust Collection	<b>Yes</b> 👍	No (external)	No (external)
Switch Type	<b>Hall-Effect Dustproof/Waterproof</b> 👍	Standard Type	Standard Type
Locking Gear Lever	<b>Yes</b> 👍	No	No
Levels	Yes	Yes	Yes
Soft-Grip Rubber Handle	Yes	Yes	Yes
In-line Side Handle	Yes	Yes	Yes
Centering Aid	Optional	Optional	Optional
Weight	6.5 kg (with anti-seize ring)	5.8 kg	6.4 kg
Gearcase / Motor Housing Material	Aluminum / Aluminum	Aluminum / Plastic	Aluminum / Aluminum
Gearbox Lubrication	Oil Bath	Oil Bath	Oil Bath
Street Price (Germany, w/o tax) Internet sourced info		€ 975,00	€ 1056,00
Remarks		No LED load indicator.	No LED load indicator.

Conclusion

The **AGP** offers the best combination of features and performance to work in the widest range of sizes and includes useful touches, such as the LED load indicator, standard anti-seize ring, soft-grip handle and dustproof/waterproof switch. This gives the maximum value to the end user.

**AGP** | DD62 Dry Drilling Motor

# Comparison Table

Brand

**AGP**<sup>®</sup>

**CARDI**

Special Dry Drilling of Reinforced Concrete with Percussion



Model No.	DD62	DP 2200 MA-16
Power	230 - 240 V: 2200 W	230 V: 2200 W
RPM (rated load)	<b>Gear 1: 750 /min   Gear 2: 1140 /min</b>	<b>880 /min (Only One Gear)</b>
Percussion Frequency (rated load)	<b>Gear 1: 16 250 bpm   Gear 2: 24 700 bpm</b>	21 000 bpm
Insulation Class	Class 2	Class 2
Capacity-Dry, Reinforced Concrete	<b>162 mm</b>	152 mm
Capacity-Dry, Brick	<b>250 mm</b>	202 mm
Spindle	1-1/4" UNC & 1/2" BSP	1-1/4" UNC
Led Indicator	<b>Yes (in most visible position)</b>	<b>No</b>
Anti-Seize Ring	Yes	Optional
Integrated Dust Collection	Yes	Yes
Switch Type	<b>Hall-Effect Dustproof/Waterproof</b>	Standard Type
Locking Gear Lever	<b>Yes</b>	No
Levels	<b>Yes</b>	No
Soft-Grip Rubber Handle	<b>Yes</b>	No
In-line Side Handle	<b>Yes</b>	No (offset)
Centering Aid	Optional	Optional
Weight	<b>6.5 kg (with anti-seize ring)</b>	7.1 kg
Gearcase / Motor Housing Material	Aluminum / Aluminum	Aluminum / Aluminum
Gearbox Lubrication	<b>Oil Bath</b>	<b>Grease</b>
Street Price (Germany, w/o tax) Internet sourced info		€ 990,00
Remarks		Single gear limits size versatility (only good for larger Øs)

Conclusion

The **AGP** offers the best combination of features and performance to work in the widest range of sizes and includes useful touches, such as the LED load indicator, standard anti-seize ring, soft-grip handle and dustproof/waterproof switch. This gives the maximum value to the end user.

**AGP** | DD62 Dry Drilling Motor

# Comparison Table

Brand

Special Dry Drilling of Reinforced Concrete with Percussion



Model No.	DD62	ESD 162	FBS16
Power	230 - 240 V: 2200 W	230 V: 2200 W	230 V: 2200 W
RPM (rated load)	<b>Gear 1: 750 /min Gear 2: 1140 /min</b>	<b>0-1100 /min (Only One Gear)</b>	<b>1100 /min (Only One Gear)</b>
Percussion Frequency (rated load)	Gear 1: 16 250 bpm Gear 2: 24 700 bpm	22 000 bpm	22 000 bpm
Insulation Class	Class 2	Class 1	Class 1
Capacity-Dry, Reinforced Concrete	162 mm	162 mm (202 mm max.)	162 mm
Capacity-Dry, Brick	<b>250 mm</b>	202 mm	202 mm
Spindle	1-1/4" UNC & 1/2" BSP	1-1/4" UNC	1-1/4" UNC & 1/2" BSP
Led Indicator	<b>Yes (in most visible position)</b>	Yes (on left side of handle)	Yes (on left side of handle)
Anti-Seize Ring	<b>Yes</b>	Optional	No
Integrated Dust Collection	Yes	No (external)	No (external)
Switch Type	<b>Hall-Effect Dustproof/Waterproof</b>	Standard Type, Variable	Standard Type
Locking Gear Lever	<b>Yes</b>	No	No
Levels	Yes	Yes	Yes
Soft-Grip Rubber Handle	<b>Yes</b>	No (hard plastic)	No (hard plastic)
In-line Side Handle	<b>Yes</b>	No (offset)	No (offset)
Centering Aid	Optional	Optional	Optional
Weight	6.5 kg (with anti-seize ring)	6.6 kg	6.7 kg
Gearcase / Motor Housing Material	Aluminum / Aluminum	Aluminum / Plastic	Aluminum / Plastic
Gearbox Lubrication	Oil Bath	<b>Grease</b>	<b>Grease</b>
Street Price (Germany, w/o tax) Internet sourced info		€ 771,76	€ 961,00
Remarks		Single gear limits size versatility (performance suffers with both larger & smaller Øs)	Single gear limits size versatility (performance suffers with both larger & smaller Øs)
Conclusion	The <b>AGP</b> offers the best combination of features and performance to work in the widest range of sizes and includes useful touches, such as the LED load indicator, standard anti-seize ring, soft-grip handle and dustproof/waterproof switch. This gives the maximum value to the end user.		

# Tool Dimensions

