



DMC160 Wet And Dry Drilling Motor

May. 2024

Internal & Confidential

AGP | DMC160 Wet And Dry Drilling Motor

AGP TAIWAN

Lee Yeong Industrial Co., Ltd.

No.2, Kejia Rd., Douliu City, 64057, Taiwan

Tel : 886-5-5518689 Fax : 886-5-5518635

AGP EUROPE BV

Evenbroekveld 16D, 9420 Erpe-Mere, Belgium

Tel : +32 53 21 62 22 Fax : +32 53 83 88 20



Introduction

Target group & Applications

DMC 160 Introduction

This is a very versatile 2200 W core drilling motor with 3-speed oil-bath gearbox which is primarily for wet drilling up to 162mm in reinforced concrete, but which can also be used for dry drilling up to 202mm in materials such as brick. It has a convertible port on the aluminum gearcase so the operator can choose between water feed and dust collection. It can be used either hand-held or mounted to a drill stand. With its nylon motor housing, it is light and economical, yet it still retains a full range of features. For example, its LED Load indicator is bright and ideally located, making it easy to use as a guide to efficient operation.

Target Groups and Applications

This tool will be a great choice for operators such as general construction personnel, or anyone who needs to drill a wide range of sizes in both reinforced concrete and brick. It will be most suited to operators who are not drilling all day long, but still need a capable tool. This tool would be a perfect choice for a user who primarily needs to drill wet in concrete, and who may also need to occasionally drill dry in brick.



Sales Arguments



Heavy-Duty Gearbox

Oil bath, 3-speed gearbox with mechanical clutch for heavy-duty use.



Highly Visible LED Load Indicator

LED load indicator is large, bright, and in the most visible position, to give the operator reliable guidance on load conditions.



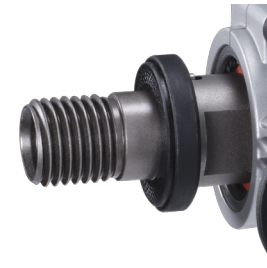
Special Waterproof Switch

Hall Effect Switch is completely waterproof and dustproof. Includes anti-restart function.



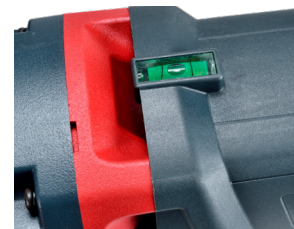
Integrated Convertible Port

Convertible port allows quick change from water feed for wet drilling, to through-the-spindle dust collection for dry drilling.



Anti-Seize ring

Standard equipment anti-seize ring prevents the bit from becoming stuck on the spindle.



Spirit Level

Spirit level allows operator to create precisely aligned holes

Technical Specification

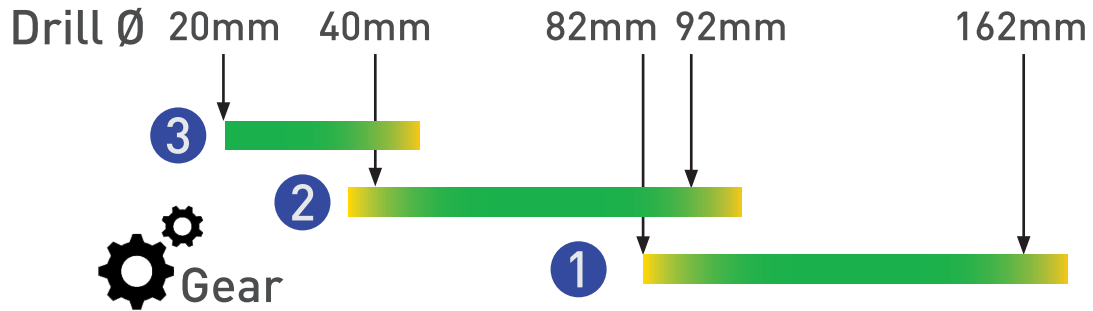
Model	DMC160
Power Input	2200 W (230-240 V), 2000 W (220 V), 1700 W (110-120 V)
Voltage, Frequency	230-240 V~ 50-60 Hz, 220 V~ 50-60 Hz or 110-120 V~ 50-60 Hz
No Load Speeds	1000 / 1600 / 4450 min ⁻¹
Rated Load Speeds	650 / 1040 / 2890 min ⁻¹
Capacity-Wet	Hand-Held : 82 mm (3-1/4") Rig-Mounted : 162 mm (6-1/2")
Capacity-Dry	202 mm (8")
Gear Oil Type	80W-90
Gear Oil Capacity	200 ml
Spindle Thread External / Internal	1-1/4" UNC male & 1/2" BSP female
Neck Diameter	60 mm
Soft Start & Overload Protection	With
Mechanical Safety Clutch	With
Insulation Class	Class II with PRCD / GFCI
Dimensions (LxWxH)	528 x 106 x 145 mm
Weight	5.8 kg (12.8 lb)



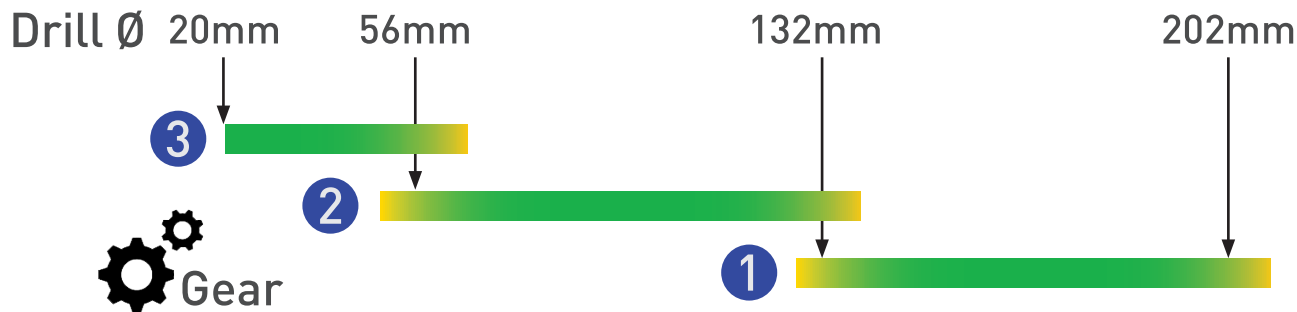
- ① Spindle 1-1/4"UNC & 1/2"BSP
- ② Anti-Seize Ring
- ③ Tubular Spirit Level
- ④ Indicator Light
- ⑤ Lock Button
- ⑥ Trigger Switch
- ⑦ Main Handle
- ⑧ Gear Selector
- ⑨ Side Handle Assy.
- ⑩ Water Feed Adaptor Head
- ⑪ Water Feed Valve
- ⑫ Vacuum Adaptor Head

Ideal Operating Window

Wet Drilling in Reinforce Concrete



Dry Drilling in Brick



Offer Content

Standard Accessories

- 1 DMC160 Wet And Dry Drilling Motor
- 2 Side Handle
- 3 Brass Claw-Type Vacuum Adaptor Head
- 4 Brass Claw-Type Water Supply Kit
- 5 M32 Wrench
- 6 Blow Molded Case



Optional Accessory

- 7 Pilot Drill Socket



Comparison Table

Brand

AGP



Husqvarna



EIBENSTOCK



spit



HILTI



BOSCH



ADAMAS
High Speed Diamond Solutions



Model No.	DMC160	DM 220	ETN 162/3	SD 160	DD 150-U	GDB 180 WE	CORE CX 20-CE3
Power Input	2200 W (230-240 V)	220-240 V: 1850 W	230 V: 2200 W	230 V: 2000 W	220-240 V: 2200 W	220-240 V: 2000 W	220-240 V: 2000 W
RPM (rated load)	Gear 1: 670 Gear 2: 1070 Gear 3: 2990	Gear 1: 580 Gear 2: 1400 Gear 3: 2900	Gear 1: 0-510 Gear 2: 0-1150 Gear 3: 0-2500	Gear 1: 660 Gear 2: 1550 Gear 3: 3300	Gear 1: 780 (507) Gear 2: 1520 (988) Gear 3: 2850 (1853)	Gear 1: 540 Gear 2: 1700 -	Gear 1: 450 Gear 2: 1050 Gear 3: 2000
Capacity-Wet Capacity-Dry	162 mm 202 mm	👍 150 mm	162 mm 202 mm	162 mm 182 mm	Rig-Mounted: 162 mm	180 mm 180 mm	150 mm 200 mm
Spindle	1-1/4" & 1/2"	1-1/4" & 1/2"	1-1/4" & 1/2"	1-1/4" & 1/2"	BI+	1-1/4" & 1/2"	1-1/4" & 1/2"
Gearbox Lubrication	Oil Bath	👍 Oil Bath	Oil Bath	Oil Bath	Grease	Oil Bath	Grease
LED Indicator	Yes In Most Visible Position	👍 No	Yes On Handle Bottom	Yes On Back Of Handle	Yes On Back Of Motor	No	No
Anti-seize Ring	Yes	👍 No	No	No	No	No	No
Integrated Dust Collection	Yes, Brass	Yes, Plastic	Yes, Aluminum	No, Optional External	Yes, Plastic	Yes, Brass	Yes, Plastic
Levels	Yes	Yes, Electronic	Yes	Yes	No	Yes	No
In-line Side Handle	Yes	👍 Yes	No, Offset	Yes	Yes	Yes	No, offset
Centering Aid	Optional	Yes	Optional	Yes	Yes, optional	Yes, optional	Yes, optional
Constant Speed	No	No	Yes	No	No	No	No
Waterproof Switch (w/ Anti-Restart)	Yes (Hall Effect Type)	👍 No	No	No	No	No	No
Weight	5.8 kg	7.0 kg	6.7 kg	6.2 kg	8.2 kg	5.2 kg	6.7 kg
Remarks	High-Visibility Load Indicator, Anti-Seize Ring, In-Line Side Handle	Electronic Levels, SmartStart Function (Slow Start)	Variable Constant Speed	-	Water Flow Indicator	Only 2 Gears	-
Conclusion	The AGP is the lightest weight 3-speed tool, yet with the highest power. The LED light is in the best possible location for easy viewing. Top quality materials are used, such as the brass water and vacuum claw-type couplings. There are useful features, such as the in-line side handle and anti-seize ring. All these factors combine to make the AGP the highest value and best performing tool in this comparison.						

Tool Dimensions (mm)

