



# DM62

## Diamond Core Drilling Motor

### For Dry Drilling of Reinforced Concrete

Apr. 2024

Internal & Confidential

**AGP** | DM62 Dry Drilling Motor

#### AGP TAIWAN

Lee Yeong Industrial Co., Ltd.

No.2, Kejia Rd., Douliu City, 64057, Taiwan

Tel : 886-5-5518689 Fax : 886-5-5518635

#### AGP EUROPE BV

Evenbroekveld 16D, 9420 Erpe-Mere, Belgium

Tel : +32 53 21 62 22 Fax : +32 53 83 88 20

# Introduction

## Target group & Applications

### DM62 Introduction

This is a special 2200 W core drilling motor with 2-speed oil-bath gearbox which is primarily for dry drilling up to 162mm in reinforced concrete, but which can also be used for dry drilling up to 262mm in materials such as brick. While dry drilling of brick is very common, dry drilling of reinforced concrete is a relatively new technology which has only been made possible by new types of core bits. This tool is specifically designed to optimally perform with these new bits.

The gearbox features a mechanical clutch and employs switchable soft percussion function which assists in drilling efficiency. This tool must always be used together with a vacuum cleaner. It can be used either hand-held or mounted to a drill stand, but we recommend to always use it on the drill stand when drilling reinforced concrete. With its all metal construction, it is built for heavy duty operation.



### Target Groups and Applications

The DM62 is an excellent choice for operators who need to drill in situations where water cannot or should not be used, such as in occupied buildings or in constructions where there is a combination of wood and stone. New advances in the development of dry drill bits now allow for easy drilling in a variety of building materials from reinforced concrete to brick.

The DM62 serves many applications that require drilling into reinforced concrete as well as into brick, silicate stone, and concrete blocks. It is designed to meet the requirements of new building standards imposed for the protection of the climate, requiring many cut-outs for the installation of ventilation equipment and air conditioning. The DM62 is also ideally suited for drilling companies preparing recesses for electrical outlets and light switches for industrial electricians. In addition, dry overhead drilling with the DM62 is much lighter, faster and just as precise when compared to wet drilling.

The DM62 is a useful addition to the equipment of specialist drilling companies and general construction companies, or anyone who needs an intensive-use dry drill motor for both reinforced concrete and brick.



# Sales Arguments



## Switchable Soft Percussion

Keeps diamond segments sharp and assists the general efficiency of the dry drilling process.



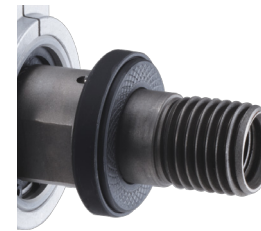
## Heavy-Duty Gearbox

Oil bath, 2-speed gearbox with mechanical clutch for heavy-duty use.



## LED Load Indicator

LED load indicator to give the operator reliable guidance on load conditions.



## Anti-Seize Ring

Standard equipment anti-seize ring prevents the bit from becoming stuck on the spindle.



## Special Dustproof Switch

Hall Effect Switch is completely dustproof, and is even waterproof. Includes anti-restart function.



## Spirit Levels

Vertical and horizontal Spirit Levels allow operators to create precisely aligned holes

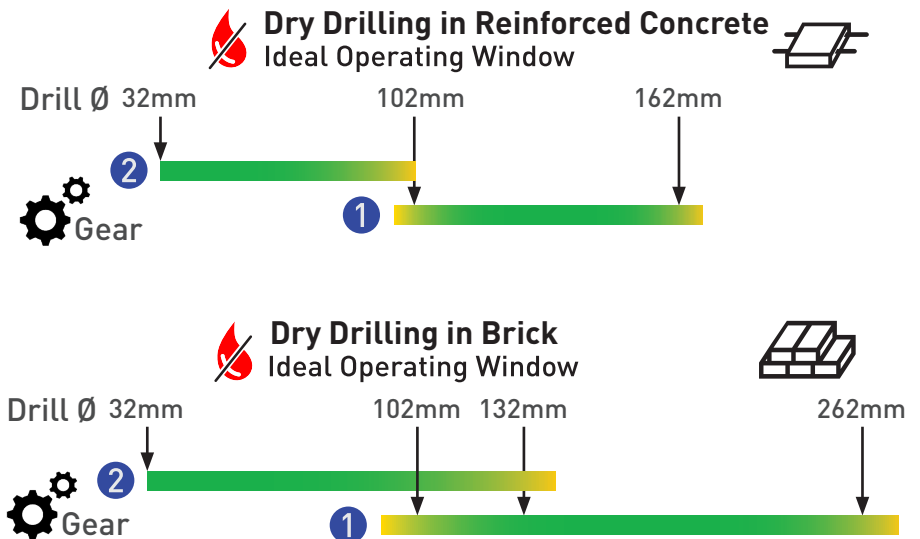
# Technical Specification

## Technical Specification

Model	DM62
Power Input	230 - 240 V: 2200 W
	220 V : 2000 W
Voltage, Frequency	110 - 120 V: 1700 W
	110-120 V~ 50-60 Hz <sub>or</sub> 230-240 V~ 50-60 Hz
No Load Speeds	1250 / 1900 min <sup>-1</sup>
Rated Load Speeds	750 / 1140 min <sup>-1</sup>
Percussion Frequency, No Load	25 000 / 38 000 b/min
Percussion Frequency, Rated Load	16 250 / 24 700 b/min
Capacity-Dry (Reinforced Concrete)	162 mm (6-1/2")
Capacity-Dry (Brick)	262 mm (10")
Gear Oil Type	80W-90
Gear Oil Capacity	200 ml
Arbor Thread	1 1/4" UNC & 1/2" BSP
Neck Diameter	60 mm
Dimensions (LxWxH)	430 x 122 x 290 mm
Weight	6.3 kg (13.6 lb)



- 1 Spindle 1-1/4"UNC & 1/2"BSP
- 6 Hall Effect Switch
- 2 Gear Selector
- 7 Side Handle Assy
- 3 Percussion Selector
- 8 Anti-Seize Ring
- 4 Tubular Spirit Level
- 9 LED Load Indicator
- 5 Main Handle
- 10 Lock Button



# Offer Content

## Standard Accessories

- ① DM62 Dry Drilling Motor
- ② Soft Grip Side Handle
- ③ M32 Wrench
- ④ Blow Molded Case

## Optional Accessories

- ⑤ L 300 mm Centering Pilot





# Offer Content

## Standard Accessories

- ① DM62 Dry Drilling Motor
- ② Soft Grip Side Handle
- ③ M32 Wrench
- ④ Blow Molded Case

## Optional Accessories

- ⑤ Roto Molded Case
- ⑥ Centering Pilot



⑤

⑥



# Comparison Table

Brand

**AGP**

**WEKA**  
ELEKTROWERKZEUGE

**WEKA**  
ELEKTROWERKZEUGE

**BAIER**  
Elektro-  
werkzeuge

**BAIER**  
Elektro-  
werkzeuge

**CARDI**

**EIBENSTOCK**  
Elektrowerkzeuge

**GÖLZ**  
ELEKTROWERKZEUGE & BAUMGÄRTE

Special Dry Drilling of  
Reinforced Concrete  
with Percussion



<b>Model No.</b>	<b>DM62</b>		DKS 15P	DKS 15L (aluminum version)	BDB 829	BDB 825	DP 2200 MA-16	ESD 162	FBS16
<b>Power</b>	<b>230-240 V: 2200 W</b>		230 V: 2000 W	230 V: 2000 W	230 V: 2150 W	230 V: 1800 W	230 V: 2200 W	230 V: 2200 W	230 V: 2200 W
<b>RPM (rated load)</b>	<b>Gear 1: 750 /min Gear 2: 1140 /min</b>		Gear 1: 700 /min Gear 2: 1700 /min	Gear 1: 540 /min Gear 2: 1200 /min	Gear 1: 725 /min Gear 2: 1500 /min	748 /min	880 /min	0-1100 /min	1100 /min
<b>Percussion Frequency (rated load)</b>	<b>Gear 1: 16 250 bpm Gear 2: 24 700 bpm</b>		Gear 1: 14 000 bpm Gear 2: 34 000 bpm	Gear 1: 10 800 bpm Gear 2: 24 000 bpm	Gear 1: 14 500 bpm Gear 2: 30 000 bpm	18 000 bpm	21 000 bpm	22 000 bpm	22 000 bpm
<b>Insulation Class</b>	<b>Class 2</b>		Class 1	Class 1	Class 2	Class 2	Class 2	Class 1	Class 1
<b>Capacity-Dry, Reinforced Concrete</b>	<b>162 mm</b>		150 mm	180 mm	200 mm	160 mm	152 mm	162 mm (202 mm max.)	162 mm
<b>Capacity-Dry, Brick</b>	<b>262 mm</b>		180 mm	200 mm	250 mm	200 mm	202 mm	202 mm	202 mm
<b>Spindle</b>	<b>1-1/4" UNC &amp; 1/2" BSP</b>		1-1/4" UNC & 1/2" BSP	1-1/4" UNC & 1/2" BSP	1-1/4" UNC & 1/2" BSP	1-1/4" UNC & 1/2" BSP	1-1/4" UNC	1-1/4" UNC & 1/2" BSP	1-1/4" UNC & 1/2" BSP
<b>Led indicator</b>	<b>Yes</b>		No	No	Yes (on left side of handle)	Yes (on left side of handle)	No	Yes (on left side of handle)	Yes (on left side of handle)
<b>Anti-Seize Ring</b>	<b>Yes</b>		No	No	No	No	Optional	Optional	No
<b>Integrated Dust Collection</b>	<b>Yes</b>		No (external)	No (external)	No (external)	No (external)	Yes	No (external)	No (external)
<b>Switch Type</b>	<b>Hall-Effect Dustproof/ Waterproof</b>		Standard Type	Standard Type	Standard Type	Standard Type	Standard Type	Standard Type, Variable	Standard Type
<b>Locking Gear Lever</b>	<b>Yes</b>		No	No	No	No	No	No	No

# Comparison Table

Brand

**AGP**<sup>®</sup>

**WEKA**  
ELEKTROWERKZEUGE

**WEKA**  
ELEKTROWERKZEUGE

**BAIER**  
Elektro-  
werkzeuge

**BAIER**  
Elektro-  
werkzeuge




**CARDI**

**EIBENSTOCK**  
Elektrowerkzeuge

**GÖLZ**  
HAARNTSCHNEIDER & BALMATE

Special Dry Drilling of Reinforced Concrete with Percussion



<b>Model No.</b>	<b>DM62</b>	DKS 15P	DKS 15L (aluminum version)	BDB 829	BDB 825	DP 2200 MA-16	ESD 162	FBS16	
<b>Levels</b>	<b>Yes</b>	Yes	Yes	Yes	Yes	No	Yes	Yes	
<b>Soft-Grip Rubber Handle</b>	<b>Yes</b>	 Yes	Yes	Yes	No (hard plastic)	No (hard plastic)	No	No (hard plastic)	No (hard plastic)
<b>In-line Side Handle</b>	<b>Yes</b>	 Yes	Yes	Yes	No (fixed)	No (fixed)	No (offset)	No (offset)	No (offset)
<b>Centering Aid</b>	<b>Optional</b>	Optional	Optional	Optional	Optional	Optional	Optional	Optional	
<b>Weight</b>	<b>6.3 kg (with anti-seize ring)</b>	5.8 kg	6.4 kg	6.6 kg	5.2 kg	7.1 kg	6.6 kg	6.7 kg	
<b>Gearcase / Motor Housing Material</b>	<b>Aluminum / Aluminum</b>	Aluminum / Plastic	Aluminum / Aluminum	Aluminum / Plastic	Aluminum / Plastic	Aluminum / Aluminum	Aluminum / Plastic	Aluminum / Plastic	
<b>Gearbox Lubrication</b>	<b>Oil Bath</b>	 Oil Bath	Oil Bath	Grease	Grease	Grease	Grease	Grease	
<b>Street Price (Germany, w/o tax)</b>		€ 975,00	€ 1056,00	€ 949,54	€ 725,21	€ 990,00	€ 771,76	€ 961,00	
<b>Internet sourced info</b>									
<b>Remarks</b>		No LED load indicator.	No LED load indicator.	Fixed handle.	Fixed handle.	Single gear limits size versatility (only good for larger Øs)	Single gear limits size versatility (performance suffers with both larger & smaller Øs)	Single gear limits size versatility (performance suffers with both larger & smaller Øs)	
<b>Conclusion</b>	The <b>AGP</b> offers the best combination of features and performance to work in the widest range of sizes and includes useful touches, such as the LED load indicator, standard anti-seize ring, soft-grip handle and dustproof/waterproof switch. This gives the maximum value to the end user.								



# Comparison Table

Brand



Special Dry Drilling of Reinforced Concrete with Percussion

Model No.	DM62	BDB 829	BDB 825
Power	230 - 240 V: 2200 W	230 V: 2150 W	230 V: 1800 W
RPM (rated load)	Gear 1: 750 /min Gear 2: 1140 /min	Gear 1: 725 /min Gear 2: 1500 /min	748 /min (only one gear)
Percussion Frequency (rated load)	Gear 1: 16 250 bpm Gear 2: 24 700 bpm	Gear 1: 14 500 bpm Gear 2: 30 000 bpm	18 000 bpm
Insulation Class	Class 2	Class 2	Class 2
Capacity-Dry, Reinforced Concrete	162 mm	200 mm	160 mm
Capacity-Dry, Brick	262 mm	250 mm	200 mm
Spindle	1-1/4" UNC & 1/2" BSP	1-1/4" UNC & 1/2" BSP	1-1/4" UNC & 1/2" BSP
Led Indicator	Yes (in most visible position)	Yes (on left side of handle)	Yes (on left side of handle)
Anti-Seize Ring	Yes	No	No
Integrated Dust Collection	Yes	No (external)	No (external)
Switch Type	Hall-Effect Dustproof/Waterproof	Standard Type	Standard Type
Locking Gear Lever	Yes	No	No
Levels	Yes	Yes	Yes
Soft-Grip Rubber Handle	Yes	No (hard plastic)	No (hard plastic)
In-line Side Handle	Yes	No (fixed) (not adjustable)	No (fixed) (not adjustable)
Centering Aid	Optional	Optional	Optional
Weight	6.3 kg (with anti-seize ring)	6.6 kg	5.2 kg
Gearcase / Motor Housing Material	Aluminum / Aluminum	Aluminum / Plastic	Aluminum / Plastic
Gearbox Lubrication	Oil Bath	Grease	Grease
Street Price (Germany, w/o tax) Internet sourced info		€ 949,54	€ 725,21
Remarks		Fixed handle.	Fixed handle.

Conclusion

The **AGP** offers the best combination of features and performance to work in the widest range of sizes and includes useful touches, such as the LED load indicator, standard anti-seize ring, soft-grip handle and dustproof/waterproof switch. This gives the maximum value to the end user.

# Comparison Table

Brand



Special Dry Drilling of Reinforced Concrete with Percussion

Model No.	DM62	DKS 15P	DKS 15L (aluminum version)
Power	230 - 240 V: 2200 W	230 V: 2000 W	230 V: 2000 W
RPM (rated load)	Gear 1: 750 /min Gear 2: 1140 /min	Gear 1: 700 /min Gear 2: 1700 /min	Gear 1: 540 /min Gear 2: 1200 /min
Percussion Frequency (rated load)	Gear 1: 16 250 bpm Gear 2: 24 700 bpm	Gear 1: 14 000 bpm Gear 2: 34 000 bpm	Gear 1: 10 800 bpm Gear 2: 24 000 bpm
Insulation Class	Class 2	Class 1	Class 1
Capacity-Dry, Reinforced Concrete	162 mm	150 mm	180 mm
Capacity-Dry, Brick	262 mm	180 mm	200 mm
Spindle	1-1/4" UNC & 1/2" BSP	1-1/4" UNC & 1/2" BSP	1-1/4" UNC & 1/2" BSP
Led Indicator	Yes (in most visible position)	No	No
Anti-Seize Ring	Yes	No	No
Integrated Dust Collection	Yes	No (external)	No (external)
Switch Type	Hall-Effect Dustproof/Waterproof	Standard Type	Standard Type
Locking Gear Lever	Yes	No	No
Levels	Yes	Yes	Yes
Soft-Grip Rubber Handle	Yes	Yes	Yes
In-line Side Handle	Yes	Yes	Yes
Centering Aid	Optional	Optional	Optional
Weight	6.3 kg (with anti-seize ring)	5.8 kg	6.4 kg
Gearcase / Motor Housing Material	Aluminum / Aluminum	Aluminum / Plastic	Aluminum / Aluminum
Gearbox Lubrication	Oil Bath	Oil Bath	Oil Bath
Street Price (Germany, w/o tax) Internet sourced info		€ 975,00	€ 1056,00
Remarks		No LED load indicator.	No LED load indicator.

Conclusion

The **AGP** offers the best combination of features and performance to work in the widest range of sizes and includes useful touches, such as the LED load indicator, standard anti-seize ring, soft-grip handle and dustproof/waterproof switch. This gives the maximum value to the end user.

# Comparison Table

Brand



Special Dry Drilling of Reinforced Concrete with Percussion

Model No.	DM62	DP 2200 MA-16
Power	230 - 240 V: 2200 W	230 V: 2200 W
RPM (rated load)	<b>Gear 1: 750 /min</b> <b>Gear 2: 1140 /min</b>	880 /min (Only One Gear)
Percussion Frequency (rated load)	<b>Gear 1: 16 250 bpm</b> <b>Gear 2: 24 700 bpm</b>	21 000 bpm
Insulation Class	Class 2	Class 2
Capacity-Dry, Reinforced Concrete	<b>162 mm</b>	152 mm
Capacity-Dry, Brick	<b>262 mm</b>	202 mm
Spindle	1-1/4" UNC & 1/2" BSP	1-1/4" UNC
Led Indicator	<b>Yes (in most visible position)</b>	No
Anti-Seize Ring	Yes	Optional
Integrated Dust Collection	Yes	Yes
Switch Type	<b>Hall-Effect Dustproof/Waterproof</b>	Standard Type
Locking Gear Lever	<b>Yes</b>	No
Levels	<b>Yes</b>	No
Soft-Grip Rubber Handle	<b>Yes</b>	No
In-line Side Handle	<b>Yes</b>	No (offset)
Centering Aid	Optional	Optional
Weight	<b>6.3 kg (with anti-seize ring)</b>	7.1 kg
Gearcase / Motor Housing Material	Aluminum / Aluminum	Aluminum / Aluminum
Gearbox Lubrication	<b>Oil Bath</b>	Grease
Street Price (Germany, w/o tax) Internet sourced info		€ 990,00
Remarks		Single gear limits size versatility (only good for larger Øs)

**Conclusion** The **AGP** offers the best combination of features and performance to work in the widest range of sizes and includes useful touches, such as the LED load indicator, standard anti-seize ring, soft-grip handle and dustproof/waterproof switch. This gives the maximum value to the end user.

# Comparison Table

Brand



Special Dry Drilling of Reinforced Concrete with Percussion

Model No.	DM62	ESD 162	FBS16
Power	230 - 240 V: 2200 W	230 V: 2200 W	230 V: 2200 W
RPM (rated load)	Gear 1: 750 /min Gear 2: 1140 /min	👍 0-1100 /min (Only One Gear)	1100 /min (Only One Gear)
Percussion Frequency (rated load)	Gear 1: 16 250 bpm Gear 2: 24 700 bpm	22 000 bpm	22 000 bpm
Insulation Class	Class 2	Class 1	Class 1
Capacity-Dry, Reinforced Concrete	162 mm	162 mm (202 mm max.)	162 mm
Capacity-Dry, Brick	262 mm 👍	202 mm	202 mm
Spindle	1-1/4" UNC & 1/2" BSP	1-1/4" UNC	1-1/4" UNC & 1/2" BSP
Led Indicator	Yes (in most visible position)	👍 Yes (on left side of handle)	Yes (on left side of handle)
Anti-Seize Ring	Yes 👍	Optional	No
Integrated Dust Collection	Yes	No (external)	No (external)
Switch Type	Hall-Effect Dustproof/Waterproof	👍 Standard Type, Variable	Standard Type
Locking Gear Lever	Yes 👍	No	No
Levels	Yes	Yes	Yes
Soft-Grip Rubber Handle	Yes 👍	No (hard plastic)	No (hard plastic)
In-line Side Handle	Yes 👍	No (offset)	No (offset)
Centering Aid	Optional	Optional	Optional
Weight	6.3 kg (with anti-seize ring)	6.6 kg	6.7 kg
Gearcase / Motor Housing Material	Aluminum / Aluminum	Aluminum / Plastic	Aluminum / Plastic
Gearbox Lubrication	Oil Bath 👍	Grease	Grease
Street Price (Germany, w/o tax) Internet sourced info		€ 771,76	€ 961,00
Remarks		Single gear limits size versatility (performance suffers with both larger & smaller Øs)	Single gear limits size versatility (performance suffers with both larger & smaller Øs)

**Conclusion** The **AGP** offers the best combination of features and performance to work in the widest range of sizes and includes useful touches, such as the LED load indicator, standard anti-seize ring, soft-grip handle and dustproof/waterproof switch. This gives the maximum value to the end user.

# Tool Dimensions (mm)

