



# H43 High Frequency Integrated Concrete Vibrator

Sep. 2024

Internal & Confidential

**AGP** | H43 High Frequency Integrated Concrete Vibrator

## AGP TAIWAN

Lee Yeong Industrial Co., Ltd.

No.2, Kejia Rd., Douliu City, 64057, Taiwan

Tel : 886-5-5518689 Fax : 886-5-5518635

## AGP EUROPE BV

Evenbroekveld 16D, 9420 Erpe-Mere, Belgium

Tel : +32 53 21 62 22 Fax : +32 53 83 88 20

# Introduction

## Target group & Applications

### H43 Introduction

The H43 is a high frequency electric internal concrete vibrator with integrated power converter. With its 6 meter hose, it offers extended reach for deep pours, especially in structural columns. Its high frequency motor offers high efficiency and light weight. There are many different types of concrete vibrators, and this high frequency electric type with the motor directly in the poker head offers the best performance available. Since the motor is located directly in the poker head, there is no energy loss from a drive cable system. This results in the most efficient possible concrete compaction, saving time and money as well as ensuring the best results. Choose the H43 for general vibrating tasks.

### Target Groups and Applications

This is a potent tool specifically designed for quickly vibrating out all of the air pockets and voids in freshly poured concrete. This ensures that the concrete fully settles around the supporting rebar and into all corners of the forms. If the settling of the concrete were left to gravity alone, especially with thick, low-slump mixes, there would be many voids which would severely weaken the resulting structure. Concrete vibrators solve this problem and ensure the best possible quality and integrity of the resultant concrete structure. The added benefit is that the concrete will be denser and less porous, meaning it will be more watertight as well as less likely to crack in the future.

This tool is essential for the pouring of concrete, especially on important structures with critical strength specifications. It will be used by any construction professionals who perform the pouring of concrete for all types of structures, including slabs, buildings, bridges and others.



# Sales Arguments



## High Frequency Motor

The 400 Hz motor, mounted directly in the hardened steel poker head, gives superior efficiency to competitors' 200 Hz motors for more effective vibration action.



## No Driveshaft in the Hose

This design gives much higher vibrating efficiency than drive cable type vibrators, since the hose only carries the electrical wires, meaning that there are no friction problems and power losses from a drive cable.



## Integrated Power Converter with Large Heat Sink

More convenience with the entire vibrator self contained in one unit. There is no need for a separate converter - just plug directly into the outlet. Large, finned, external heat sink ensures good cooling and easy cleaning.



## Smart Electronic Design

Sophisticated converter electronics protect the motor from overload and protect from over or under voltage. Special electronics allow the same unit to be used with either 110 or 230 V single phase supply.



## Extra Protection for the Cable

The heavy-duty strain relief gives exceptional protection from damage to the power supply cable.



## Long Power Supply Cable

The 7 meter power supply cable gives more freedom of movement around the jobsite. The inline PRCD interrupter provides current leakage protection.



## Long-Reach Hose

The 6 meter hose allows the vibrator to reach into deep forms, such as columns.

# Technical Specification

Model	H43
Power Input	1200 W
Input Voltage, Frequency	100-240 V ~ 50-60 Hz
Motor Frequency	400 Hz
Vibration Rate	12,500 v/min
Centrifugal Force	2489 N
Vibrator Head Size	Ø 43 mm x 300 mm
Hose Size	Ø 36 mm x 6 m
Power Supply Cable Length	7 m
Ingress Protection	IP66
Insulation Class	Class I with PRCD
Converter Dimensions (LxWxH)	276 x 190 x 119 mm
Weight	10.2 kg (22.4 lb)

- 1 Integrated Power Converter
- 2 Main Handle
- 3 On/Off Switch
- 4 Hose
- 5 Poker Head  
[Containing High Frequency Motor]
- 6 PRCD Interrupter
- 7 Power Supply Cable
- 8 Strain Relief
- 9 Heat Sink



# Offer Content

## Standard Accessories

- ① Integrated High Frequency Concrete Vibrator Unit
- ② Inline PRCD Interrupter



## Optional Accessories

- ③ Press-Fit Type Hose Attachment (Band clamp type is standard)
- ④ Different Length of Hose



# Comparison Table

Brand



High Frequency Electric Concrete Vibrators with Integrated Converter

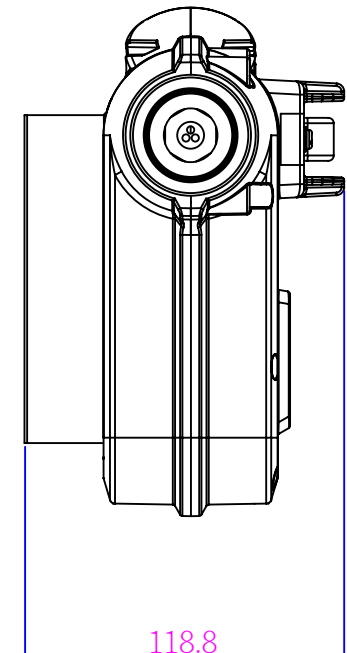
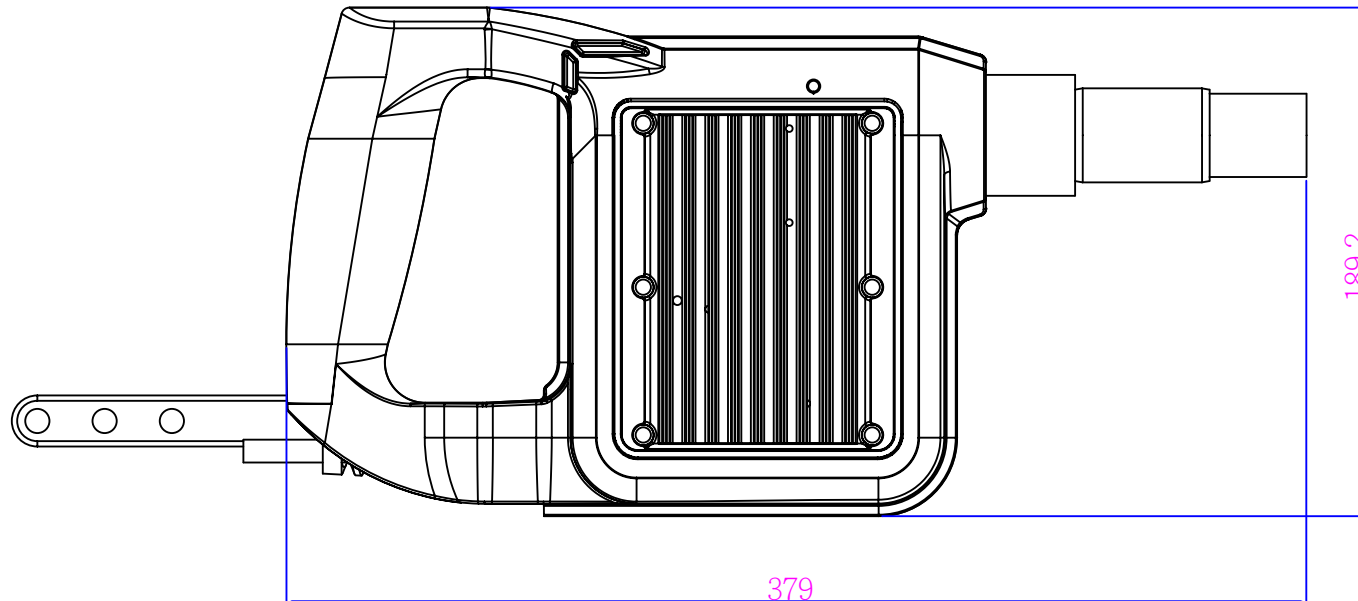


Model No.	H43	IRFU 38	Smart 40	Spyder Pro 38	EDF-38 LT	Vibrattech+ 38	LHF-E 36
Input Voltage	100-250 V, 50-60 Hz	220-240 V, 50-60 Hz	220-240 V, 50-60 Hz	220-240 V, 50-60 Hz	220-240 V, 50-60 Hz	220-240 V, 50-60 Hz	220-240 V, 50-60 Hz
Converter Power Input	1200 W	805 W	680 W	1500 W	1000 W	1500 W	920 W
Motor Frequency	400 Hz	200 Hz	200 Hz	200 Hz	200 Hz	200 Hz	200 Hz
Vibrations per Minute	12 500 v/min	12 000 v/min	12 000 v/min	12 000 v/min	13 500 v/min	12 000 v/min	12 000 v/min
Amplitude	2.0 mm	1.9 mm	2.6 mm	(not listed)	1.3 mm	(not listed)	(not listed)
Centrifugal Force	2489 N	(not listed)	1600 N	1471 N	1500 N	1825 N	(not listed)
Ingress Protection	IP 66	IP 67	IP X4	IP 67	IP 52	IP 57	IP 65
Head Dimensions	ø43 x 300 mm	ø38 x 345 mm	ø40 x 320 mm	ø38 x 350 mm	ø38 x 360 mm	ø38 x 330 mm	ø36 x 310 mm
Hose Length	6 m	5 m	5 m	5 m	7 m	7 m	5 m
Power Supply Cable Length	7 m	15 m	15 m	15 m	15 m	15 m	10 m
Weight	10.2 kg	13.6 kg	14.1 kg	14.6 kg	17.5 kg	12 kg	10 kg
		1 371,50 €	1 324,99 €	928,80 €	1 430,00 €	987,39 €	1 399,00 €

Conclusion

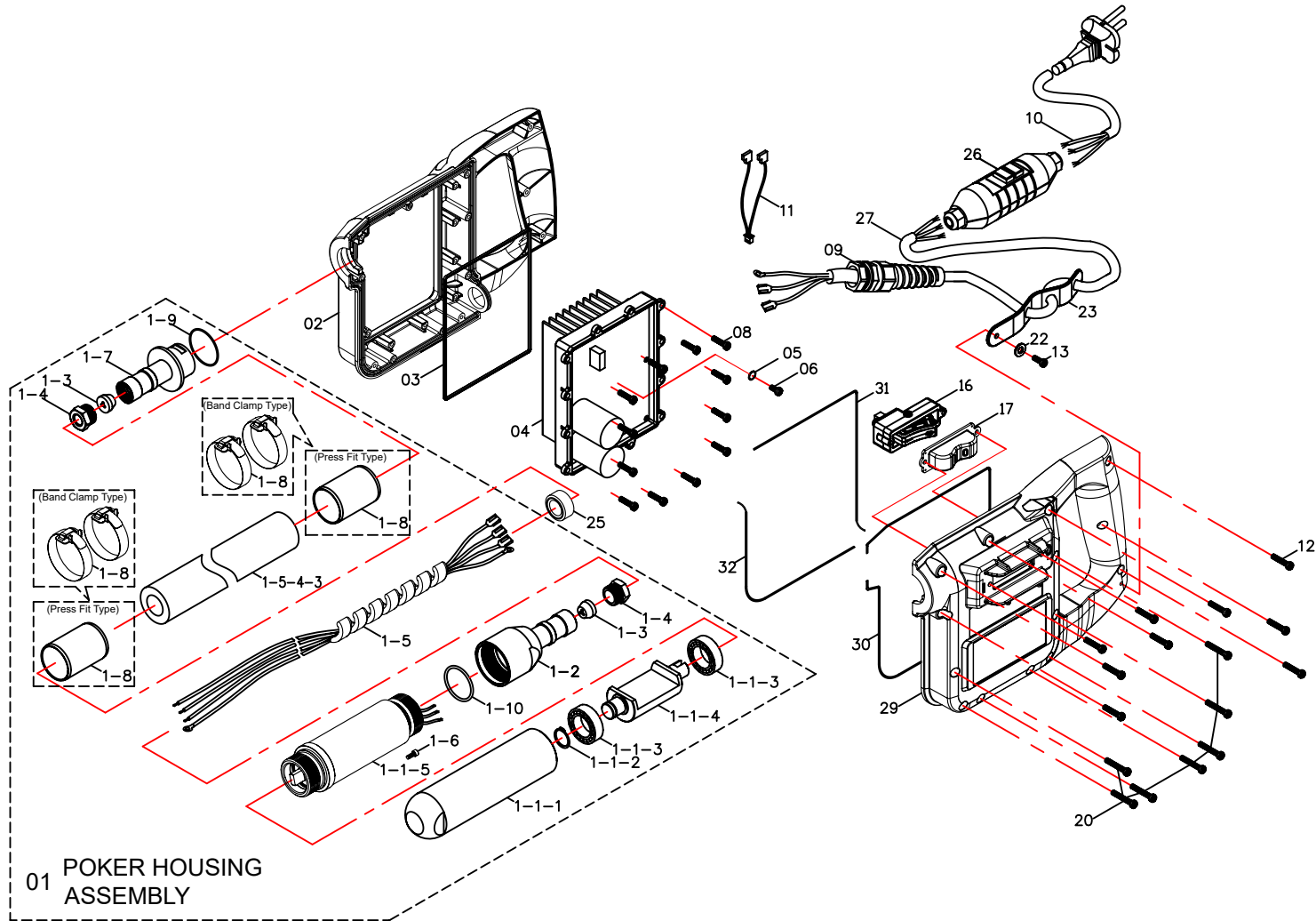
1. The **AGP** converter system is unique in the industry in having a large, exposed heat sink with cooling fins, which avoids the most common reliability issue with this type of tool: converter overheating.
2. **AGP** H43 has the best-in-class centrifugal force, for the most efficient possible compaction.
3. The handle is also ergonomically designed for operator comfort.
4. Being the lightest in weight, the **AGP** units minimize operator fatigue.
5. With **AGP**, you can use the same unit for both 110 V and 230 V input, all others require you to buy a different unit for use with 110 V vs. 230 V.

# Tool Dimensions (mm)



# Exploded View

MODEL : H43 CONCRETE VIBRATOR



NO.01~32 Version 2024.08.16 D.122