

**AGP®**



# DRC355 Dry-Cut Metal Saw

Quickly cut metals such as steel, stainless, aluminum

May. 2024

Internal & Confidential

**AGP®** | DRC355 Dry-Cut Metal Saw

## AGP TAIWAN

Lee Yeong Industrial Co., Ltd.  
No.2, Kejia Rd., Douliu City, 64057, Taiwan  
Tel : 886-5-5518689 Fax : 886-5-5518635

## AGP EUROPE BV

Evenbroekveld 16D, 9420 Erpe-Mere, Belgium  
Tel : +32 53 21 62 22 Fax : +32 53 83 88 20

# Introduction

## Target group & Applications

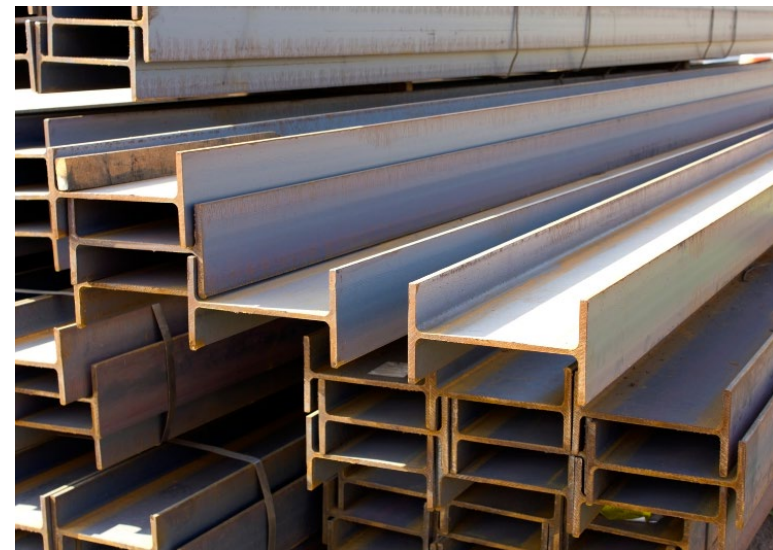
### DRC355 Introduction

The DRC355 is a bench-top dry cut metal saw designed to cut mild steel, aluminum, stainless steel, and other metals quickly and cleanly. Its TCT tipped blade cuts mild steel about three times faster than traditional abrasive wheel type chop saws, which are also known for creating a lot of sparks and dust, while leaving a cut with very rough edges; usually requiring deburring. These problems are all solved with the DRC355, which leaves the workpiece with clean edges and cuts without sparks and with minimal dust. The cutting process induces most of the heat into the swarf as it is thrown out of the kerf, leaving the workpiece itself quite cool.

The DRC355 has a stable base and a quick-action clamp to hold the workpiece for safe, reliably perpendicular cuts. It performs cross cuts as well as miter cuts both left and right, which is achieved by rotating the fence to the desired angle. The optional V-Jig Block fastens to the fence and is useful for holding small, round workpieces.

### Target Groups and Applications

A dry cut metal saw will find applications across a vast array of fields, being used just about anywhere there is a need to cut metal stock, tubing, pipes, rebar, extrusions, etc. This tool will be useful in almost any workshop or jobsite. For operators who need a heavy-duty unit with solid performance, the DRC355 is the best tool available.



# Sales Arguments

## Miter Cuts both Left and Right

Right-hand miters from 0° up to 45° are a quite common for this category of tool, but the DRC355's left-hand miter capability is unique in the industry. There are certain situations where a left-hand miter is necessary, and flipping the workpiece around to cut from the opposite direction may not be practical in some situations.



## Tool-Free Fence Lock and Quick Angle Detents

Setting the miter angle is easy and tool-free, with detents at all the most popular angles. If extra secure locking of the fence is desired, there are M8 threaded holes at the popular angles as well.



## Quick-Release Vise with Speed Crank

Allows the vise to be operated quickly and efficiently.



## Chip Tray

Catches the majority of cutting swarf.



## Convenient On-Board Wrench Storage

All the tools necessary to operate the saw are in one place where they won't be lost.



## Robust Base

Strongly built base for solid cutting performance.



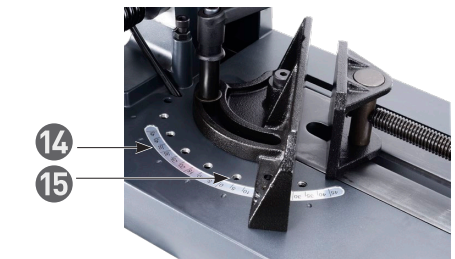
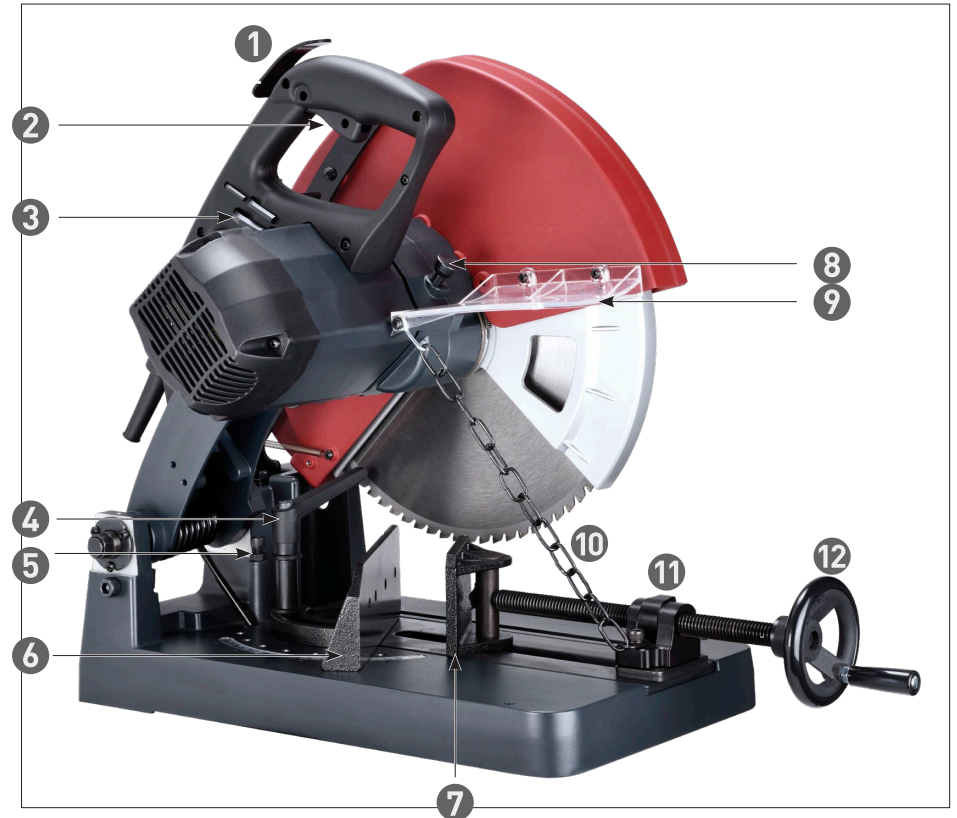
## Spindle Lock

For fast, convenient blade changes.



# Technical Specification

Model	DRC355		
Power Input	2200 W		
Voltage, Frequency	220-240 V~ 50-60 Hz, or 110-120 V~ 50-60 Hz		
No Load (Rated Load) Speed	1300 (780) min <sup>-1</sup>		
Blade Diameter	355 mm (14")		
Max. Cutting Capacities	90° Round Pipe	132 mm	
	Square Stock	120 mm (W) x 120 mm (H)	
	Rectangular Stock	180 mm (W) x 100 mm (H)	
	Right Hand Miter		
45°	Round Pipe	105 mm	
	Square Stock	90 mm (W) x 90 mm (H)	
	Rectangular Stock	90 mm (W) x 120 mm (H)	
	Left Hand Miter		
25°	80 mm (W) x 120 mm (H)		
30°	90 mm (W) x 120 mm (H) C-clamp required		
35°	90 mm (W) x 120 mm (H) C-clamp required		
45°	90 mm (W) x 120 mm (H) C-clamp required		
Arbor	25.4 mm ( 1")		
Soft Start	With		
Dimensions (LxWxH)	680 x 360 x 580 mm		
Weight	24.6 kg (54.2 lb)		



- 1 Carriage Release
- 2 Trigger Switch
- 3 L-Hex Wrenches
- 4 Fence Lock
- 5 Depth Stop
- 6 Fence
- 7 Vise Plate
- 8 Spindle Lock
- 9 Shield
- 10 Chain
- 11 Vise Release Lever
- 12 Vise Crank
- 13 Chip Tray
- 14 Miter Angle Scale (with detents)
- 15 Miter Locking Holes (for extra-rigid miter locking)

# Offer Content

## Standard Accessories

- ① DRC355 Dry-Cut Metal Saw
- ② M4 Hex Key
- ③ M6 Hex Key
- ④ M8 Hex Key

## Optional Accessories

- ⑤ V-Jig Block
- ⑥ Lever Clamp
- ⑦ Safety Goggles
- ⑧ TCT SAW BLADE



### ⑤ V-Jig Block

The V-Jig Block bolts to the fence and allows secure clamping of round workpieces, and can also clamp square section workpieces at an angle, allowing them to be more easily cut.

An added function of the V-Jig Block is to space the workpiece back from the fence, allowing the blade to cut all the way through certain shapes of workpieces.

There are multiple mounting holes to allow mounting in various positions on the fence.



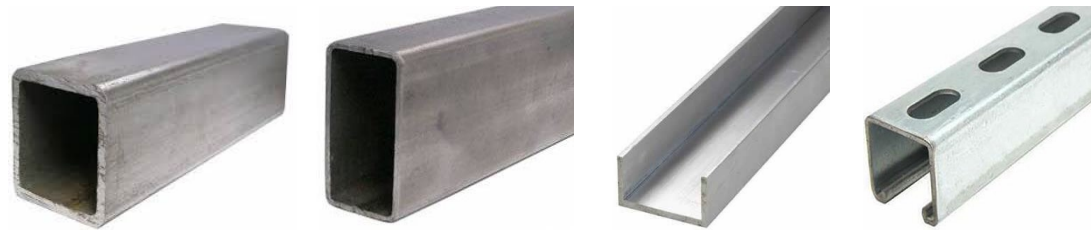
### ⑥ Lever Clamp

The Lever Clamp is useful in supplementing the clamping of the vise, especially when cutting a left-hand miter.



### ⑦ Safety Goggles

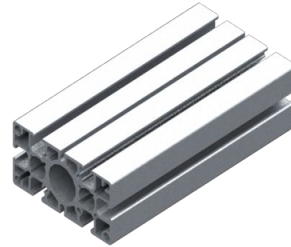
# Work Materials



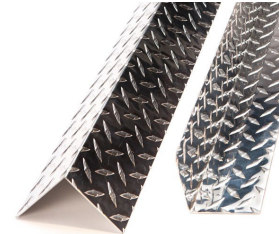
**Box Section Steel**



**Steel Tubing**



**Aluminum Extrusions**



**Diamond Plate**

# Comparison Table

Brand



Metal-Cutting  
Circular Saws



Model	DRC355	Dry Cutter 9435	Dry Cutter 9430	Element 14	MKAS 355	EDC.135	GCD 12 JL	S355CPS
Power	2200 W	2400 W	2000 W	2200 W	1800 W	2200 W	2000 W	2200 W
RPM, no load	1300 /min	1400 /min	1400 /min	1300 /min	1300 /min	1300 /min	1500 /min	1550 /min
Blade Diameter	355 mm (14")	355 mm (14")	305 mm (12")	355 mm (14")	355 mm (14")	355 mm (14")	355 mm (14")	355 mm (14")
Round Tube	132 mm	140 mm	115 mm	130 mm	100 mm	130 mm	115 mm	130 mm
Square Stock	120 mm	125 mm	100 mm	120 mm	120 mm	120 mm	100 mm	89 mm
Rectangular Stock	100 x 180 mm	105 x 155 mm	85 x 160 mm	95 x 185 mm	100 x 185 mm	120 x 120 mm	80 x 158 mm	95 x 180 mm
Miter Cut Right & Left	Yes 45° right & left	No, right miter only	No, right miter only	No, right miter only	No, right miter only	No, right miter only	No, right miter only	No, right miter only
Miter Angle Quick-Set Detents	Yes, 7 angle settings	No	No	No	No	No	No	Yes, 4 angle settings
Miter Angle Lock Holes	Yes, 7 angle settings	No	No	No	No	No	No	Yes, 4 angle settings
Fence Mounts Forward or Back	No (V-Jig Block has same effect)	No	No	Yes	Yes	No	No	Yes
Tool-Free Miter Adjustment	Yes, ratchet lever	No	Yes	Yes	Yes	Yes	Yes	Yes
Miter Cut Capable	Yes 45°	Yes	Yes	Yes 45°	Yes 45°	No	Yes	Yes
Quick-Lock Vise	Yes	Yes	Yes	Yes	Yes	Yes	Yes	Yes
V-Jig Block	Optional	Yes	No	No	No	No	No	Yes
Soft Start	Yes	Yes	Yes	Yes	Yes	Yes	Yes	Yes
Swarf Collection Tray	Yes	Yes	Yes	Yes	Yes	Yes	Yes	Yes
On-Board Wrench Storage	Yes	Yes	Yes	Yes	Yes	Yes	Yes	Yes
Street Price, Europe w/o tax		827,77 € incl. blade	696,64 € incl. blade	319,13 € incl. blade	523,49 € incl. blade	579,60 € incl. blade	460,57 € incl. blade	420,58 € incl. blade
Weight	24.6 kg	25.0 kg	23.0 kg	24.0 kg	24.4 kg	23.0 kg	20.0 kg	23.1 kg

Conclusion

The **AGP DRC355** is unique in this segment in having miter cut capability in both the right AND left direction. In certain situations, this can be extremely convenient. It features detents as well as lock holes at all of the most popular miter angles for optimal angle precision, which most other saws lack. It's power and total depth of cut is one of the highest on the market. Although it is not the lightest tool, this is due to its extremely robust aluminum alloy base, making it the most solid cutting platform, and keep in mind that this is, of course, a bench top tool. The DRC355 is clearly an excellent choice for a dry-cut metal saw.

# Tool Dimensions (mm)

