



S350 Drill Stand

Sep. 2024

Internal & Confidential

AGP TAIWAN

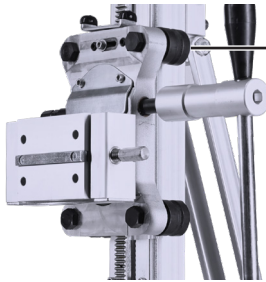
Lee Yeong Industrial Co., Ltd.
No.2, Kejia Rd., Douliu City, 64057, Taiwan
Tel : 886-5-5518689 Fax : 886-5-5518635

AGP EUROPE BV

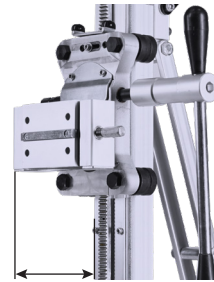
Evenbroekveld 16D, 9420 Erpe-Mere, Belgium
Tel : +32 53 21 62 22 Fax : +32 53 83 88 20



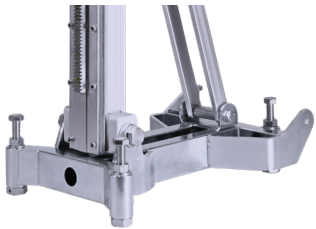
Sales Arguments



Roller Carriage Guidance
V-groove type low-friction and zero backlash roller guidance with eccentric adjustment.



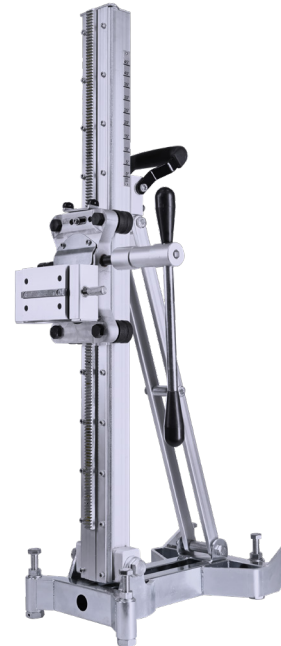
Large Drilling Capacity
Fits 350 mm bits in stock form, without needing to use any extension spacers.



Steel Box Section Base
The heavy duty steel base gives reliable stability with large diameters.



Steel-Reinforced Aluminum Column
Only the wearing surfaces, (the gear rack and roller tracks) are steel, for maximum strength and manageable weight.



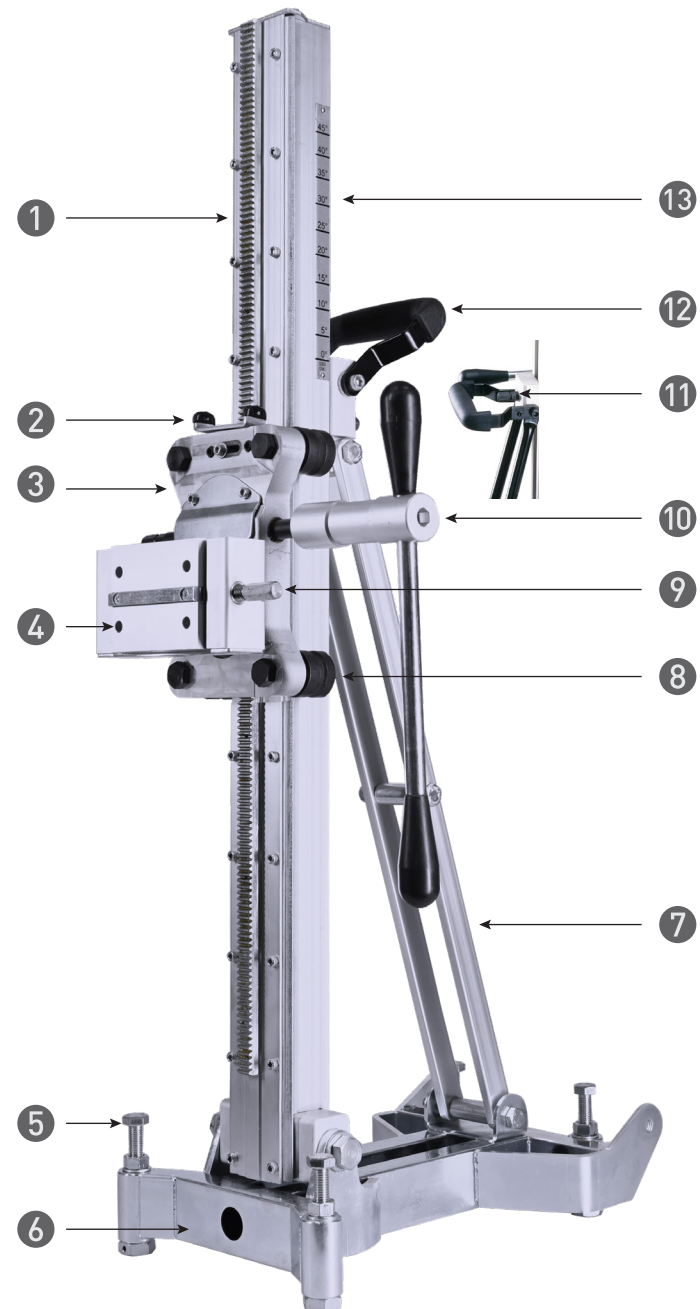
M12 Control Elements
For the convenience of the operator, all control elements on the stand are M12 head, and the crank handle can also be used as a wrench for these.



Technical Specifications

Model	S350
Capacity (without spacers)	350 mm (14")
Effective Stroke (mm)	660 mm (26")
Dimensions (LxWxH)	390 x 248 x 970 mm
Weight	14.4 kg (31.7 lb)

- 1 Column
- 2 Carriage Lock
- 3 Carriage
- 4 Motor Mount
- 5 Leveling Screws
- 6 Steel Base
- 7 Buttress Bars
- 8 Guide Roller
- 9 Cradle Lock
- 10 Crank Spindle
- 11 Tilt Lock
- 12 Handle
- 13 Tilt Scale



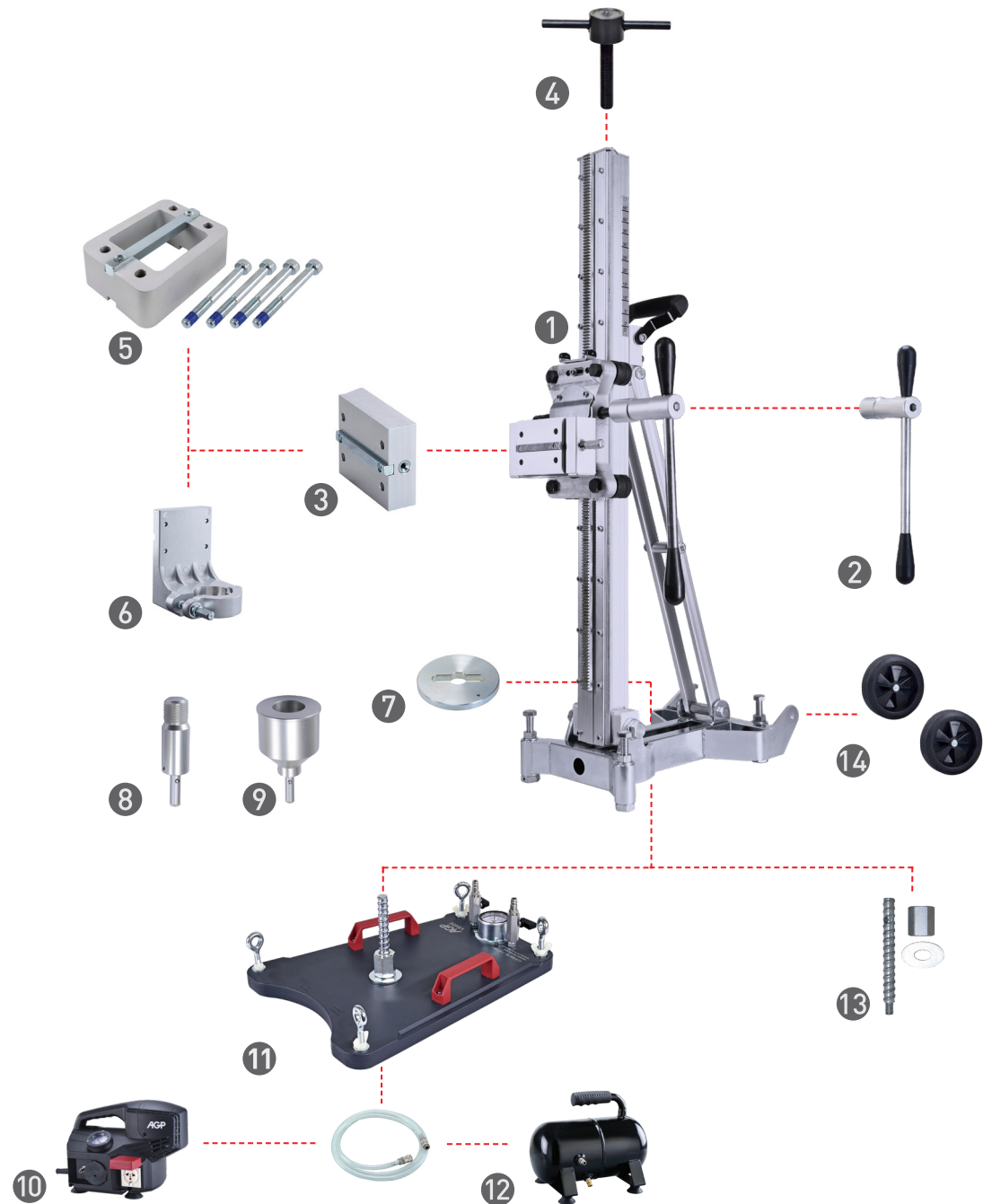
Offer Content

Standard Accessories

- ① S350 Drill Stand
- ② Crank Handle, 2 spoke sliding
- ③ Motor Mount, 4 bolt

Optional Accessory

- ④ Jack Screw
- ⑤ 40 mm Spacer Kit
- ⑥ 60 mm Clamp Bracket (for hand-held motors)
- ⑦ Anchoring Plate
- ⑧ Laser Aiming Device, 1/2" BSP
- ⑨ Laser Aiming Device, 1-1/4" & Ø 60 mm
- ⑩ VP140 Vacuum Pump
- ⑪ VB400 Vacuum Plate
- ⑫ Vacuum Tank
- ⑬ Fixing Kit, M12 anchors
- ⑭ Wheel Set



Comparison Table

Brand

AGP

TYROLIT

REIKA

REIKA

WEKA
ELEKTROWERKZEUGE



350 mm Drill Stands

Model	S350	DRA 400	KF 250	KF 400	KS 30 S
Capacity Ø (without spacers)	350 mm	250 mm	250 mm	400 mm	300 mm
Capacity Ø (max. with spacers)	352 mm	400 mm	250 mm	400 mm	350 mm
Stroke	660 mm (usable stroke)	746 mm	590 mm	690 mm	580 mm
Tilt Angle	0°- 45°	0°- 45°	60° front and back	60° front and back	0°- 45°
Motor Mount	dovetail type	Tyrolit ModulDrill quick-release	quick-release type	quick-release type	Weka Quick Connect
Carriage	4 rollers (w/ eccentric adjustment)	4 rollers (w/ eccentric adjustment)	4 stainless rollers	4 stainless rollers	4 steel rollers
Buttress Bars	aluminum (2), braced	steel (2)	optional	optional	aluminum x 2
Feed Handle	2 spoke sliding, multipurpose, M12	4 spoke sliding (not multipurpose)	3 spoke, square drive	3 spoke, square drive	3 spoke
Crank Gearing	1:1 on both sides	1:1 on one side, 3.5:1 on the other	1:1 on both sides	1:1 on both sides	1:1 on both sides
Functional Fastener Size	all M12 head (all M19 optional)	all M19 head	mix of square drive and M19 head	mix of square drive and M19 head	(not listed)
Base	anchor type, steel	anchor type, steel	anchor type, steel	anchor type, steel	anchor type, steel, w/ swivel feet
Leveling Screws	12 mm hex head (4)	19 mm hex head (4)	tool-free type (4)	tool-free type (4)	tool-free type (4)
Column	aluminum, steel reinforced	aluminum	stainless steel	stainless steel	steel
Spirit Levels	no	no	no	no	no
Carry Handle	yes	yes	yes	yes	yes
Vacuum Base Compatible	yes (separate vacuum plate)	yes (separate vacuum plate)	no	no	no
Water Collector Compatible	yes	yes	yes	yes	yes
Wheels	optional	optional	optional	optional	yes
Weight	14.4 kg	19.0 kg	16.0 kg	26.0 kg	14.5 kg
Dimensions L x W x H	390 x 248 x 970 mm	400 x 200 x 866 mm	330 x 200 x 950 mm	360 x 250 x 1140 mm	340 x 223 x 950 mm
Street Price, EU w/o tax		943,00 €	1157,32 €	1727,78 €	1271,82 €

Comparison Table

Brand



350 mm Drill Stands



Model	S350	KS 30	L300	DS 250	BST 300	B 32
Capacity Ø (without spacers)	350 mm	300 mm (200 mm w/ vacuum)	310 mm	250 mm	(not listed)	300 mm
Capacity Ø (max. with spacers)	352 mm	350 mm	350 mm	250 mm	350 mm	350 mm
Stroke	660 mm (usable stroke)	580 mm	702 mm	686 mm	(not listed)	550 mm
Tilt Angle	0°- 45°	0°- 45°	0°- 45°	0°- 60°	0°- 45°	0°- 45°
Motor Mount	dovetail type	Weka Quick Connect	Cardi Rapid Lock6	dovetail type	dovetail type	dovetail type
Carriage	4 rollers (w/ eccentric adjustment)	4 steel rollers	sliding pads	4 rollers (w/ eccentric adjustment)	sliding pads	sliding pads
Buttress Bars	aluminum (2), braced	aluminum x 2	steel (2)	aluminum, rectangular (1)	steel (2)	aluminum x 2
Feed Handle	2 spoke sliding, multipurpose, M12	3 spoke	2 spoke sliding, multipurpose, M19	2 spoke multipurpose, w/ springs	2 spoke sliding, multipurpose, D coupler	2 spoke multipurpose
Crank Gearing	1:1 on both sides	1:1 on both sides	1:1 on both sides	1:1 both sides, 2:1 one side	1:1 both sides	1:1 both sides, 2:1 one side
Functional Fastener Size	all M12 head (all M19 optional)	(not listed)	all M19 head	all M17 head	special D couplers	M13, M17, & inhex (on board tool storage)
Base	anchor type, steel	combination type, aluminum, w/ swivel feet	anchor type, aluminum	combination type, aluminum	anchor type, aluminum	anchor type, aluminum
Leveling Screws	12 mm hex head (4)	tool-free type (4)	19 mm hex head (4)	17 mm hex head (4)	tommy bar type (4)	17 mm hex head (4)
Column	aluminum, steel reinforced	steel	steel	aluminum	aluminum	aluminum
Spirit Levels	no	no	2	no	2	yes
Carry Handle	yes	yes	no	yes	yes	yes
Vacuum Base Compatible	yes (separate vacuum plate)	optional vacuum kit required	yes (separate vacuum plate)	combination type base	yes (separate vacuum plate)	

Comparison Table

Brand



350 mm Drill Stands



Model	S350	KS 30	L300	DS 250	BST 300	B 32
Water Collector Compatible	yes	yes	yes	yes	no	yes
Wheels	optional	yes	yes	optional	optional	
Weight	14.4 kg	13.0 kg	19.3 kg	17.0 kg	18.5 kg	19.0 kg
Dimensions L x W x H	390 x 248 x 970 mm	340 x 223 x 950 mm	440 x 260 x 1110 mm	545 x 266 x 1052 mm	430 x 330 x 995 mm	523 x 385 x 1060 mm
Street Price, EU w/o tax (as of 2022.09)		1177,31 €	838,19 €	1023,80 €	973,95 €	1374,00 €

Conclusion

The **AGP** S350 is specifically designed for rig-mount type drill motors up to 350 mm, therefore it directly can mount 350 mm bits without the need for any spacer. The majority of the stands in the comparison actually need extension spacers, which are a costly extra purchase, to achieve their quoted capacity. The **AGP** uses the superior roller carriage system, rather than the sliding pad type. The carriage system is adjustable to always ensure stability and precision. The more common sliding pad system is less stable and less precise. For convenience, all the operative elements of the stand are the same head size, and the crank handle can be used as a wrench for these. The **AGP** has braced buttress bars for additional stability and use of aluminum is maximized for manageable weight while using steel when necessary, such as in the base, to provide optimal strength. The **AGP** is clearly an excellent choice for drilling up to 350 mm.

Tool Dimensions (mm)

